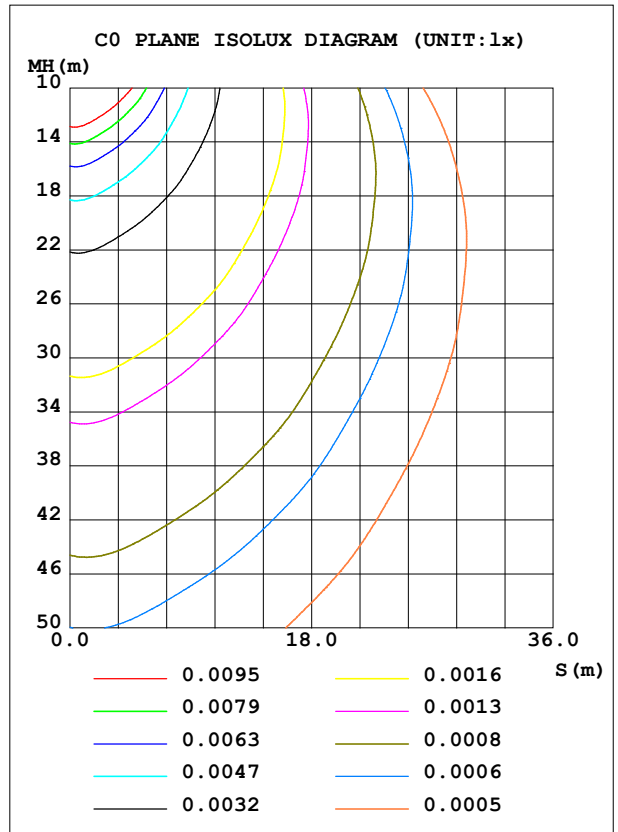
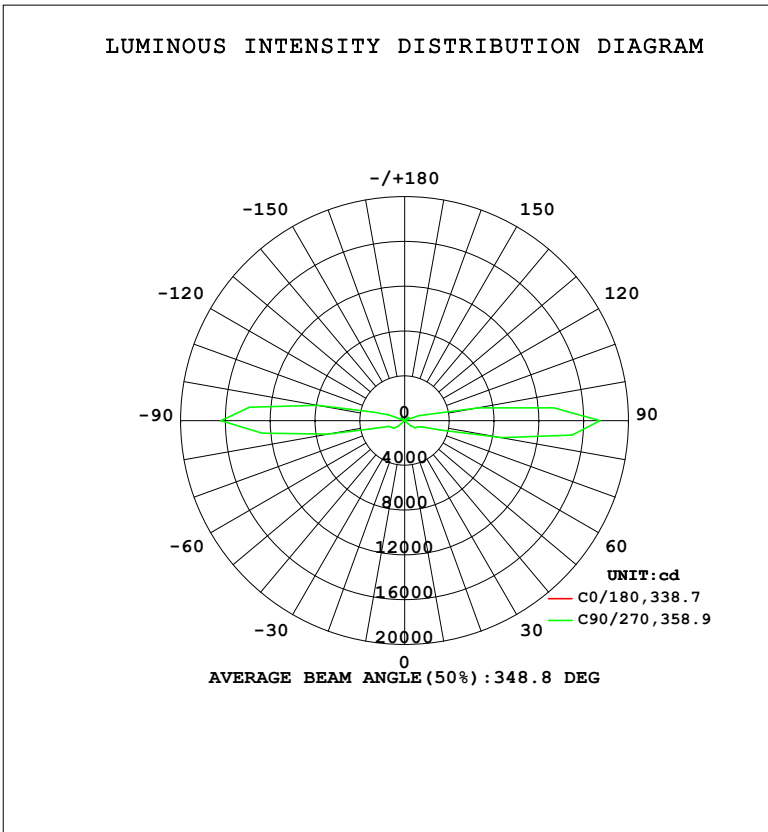


LUMINAIRE PHOTOMETRIC TEST REPORT

Test:U:220.28V I:0.1296A P:27.589W PF:0.9667 Freq:50.00Hz Lamp Flux:3173.38x1 lm		
NAME: 壁灯	TYPE: W系列	WEIGHT:
SPEC.:	DIM.:	SERIAL No.:
MFR.: EVERFINE	SUR.: 156.5mm	Shielding Angle:

DATA OF LAMP		PHOTOMETRIC DATA			
MODEL	W09B	Imax (cd)	17438	S/MH (C0/180)	1.10
NOMINAL POWER (W)	30	LOR (%)	100.0	S/MH (C90/270)	67.47
RATED VOLTAGE (V)	220	TOTAL FLUX (lm)	3173.4	η UP, DN (C0-180)	22.0, 28.4
NOMINAL FLUX (lm)	3173.38	CIE CLASS	DIFFUSE	η UP, DN (C180-360)	23.4, 26.2
LAMPS INSIDE	1	η up (%)	45.4	CIBSE SHR NOM	0.00
TEST VOLTAGE (V)	219.5	η down (%)	54.6	CIBSE SHR MAX	0.25



C Range: 0 - 360DEG
 C Interval: 22.5DEG
 Test Speed: HIGH
 Temperature: 25.3°C
 Operators: DAMIN
 Test Date: 2023-11-17

γ Range: 0 - 180DEG
 γ Interval: 5.0DEG
 Test System: EVERFINE GO-2000B_V1 SYSTEM V2.00.473
 Humidity: 65.0%
 Test Distance: 9.401m [K=1.0000]
 Remarks:

ZONAL FLUX DIAGRAM

ZONAL FLUX DIAGRAM:

γ	C0	C45	C90	C135	C180	C225	C270	C315	γ	Φ zone	Φ total	%lum,lamp
10	0.0688	0.1229	0.2331	0.1275	0.0677	0.1345	0.2255	0.1295	0- 10	0.0871	0.0871	0.00,0.00
20	0.0621	0.2345	0.5532	0.2379	0.0590	0.2217	0.5024	0.2192	10- 20	0.4016	0.4887	0.02,0.02
30	0.0562	0.3762	1.689	0.3604	0.0537	0.3440	1.453	0.3495	20- 30	1.115	1.603	0.05,0.05
40	0.0523	0.7317	5.985	0.6102	0.0514	0.6582	5.347	0.6553	30- 40	3.811	5.414	0.17,0.17
50	0.0500	1.683	72.53	1.337	0.0514	1.513	76.22	1.423	40- 50	18.67	24.09	0.76,0.76
60	0.0492	3.058	125.3	2.488	0.0523	2.836	127.6	2.713	50- 60	119.7	143.8	4.53,4.53
70	0.0489	4.135	160.4	3.471	0.0531	4.171	157.5	3.986	60- 70	216.2	360.0	11.3,11.3
80	0.0489	5.105	884.8	4.391	0.0531	5.510	695.0	5.103	70- 80	393.4	753.4	23.7,23.7
90	0.0489	5.439	1744	4.853	0.0531	8.630	1641	5.570	80- 90	979.3	1733	54.6,54.6
100	0.0489	4.768	670.6	4.309	0.0528	5.724	791.0	5.022	90-100	961.6	2694	84.9,84.9
110	0.0480	3.013	139.7	2.729	0.0506	3.149	152.4	2.781	100-110	364.3	3059	96.4,96.4
120	0.0458	1.087	6.369	1.059	0.0489	1.287	9.816	1.063	110-120	76.55	3135	98.8,98.8
130	0.0441	0.5655	47.52	0.6721	0.0466	0.7534	43.98	0.6700	120-130	24.49	3160	99.6,99.6
140	0.0421	0.4116	2.134	0.4937	0.0430	0.5886	2.441	0.4922	130-140	10.30	3170	99.9,99.9
150	0.0421	0.3023	1.152	0.3383	0.0393	0.2277	1.395	0.1869	140-150	2.311	3172	100,100
160	0.0421	0.1754	0.5038	0.1797	0.0360	0.1146	0.3202	0.0989	150-160	0.8214	3173	100,100
170	0.0427	0.0342	0.0368	0.0492	0.0334	0.0423	0.0271	0.0319	160-170	0.2159	3173	100,100
180	0.0368	0.0285	0.0068	0.0362	0.0343	0.0301	0.0068	0.0293	170-180	0.0369	3173	100,100
DEG	LUMINOUS INTENSITY:X10cd									UNIT:lm		

Conical surface Flux(90deg): 9.8606 lm

%lum = 0.3%
 %lamp = 0.3%

Conical surface Flux(130deg): 245.11 lm

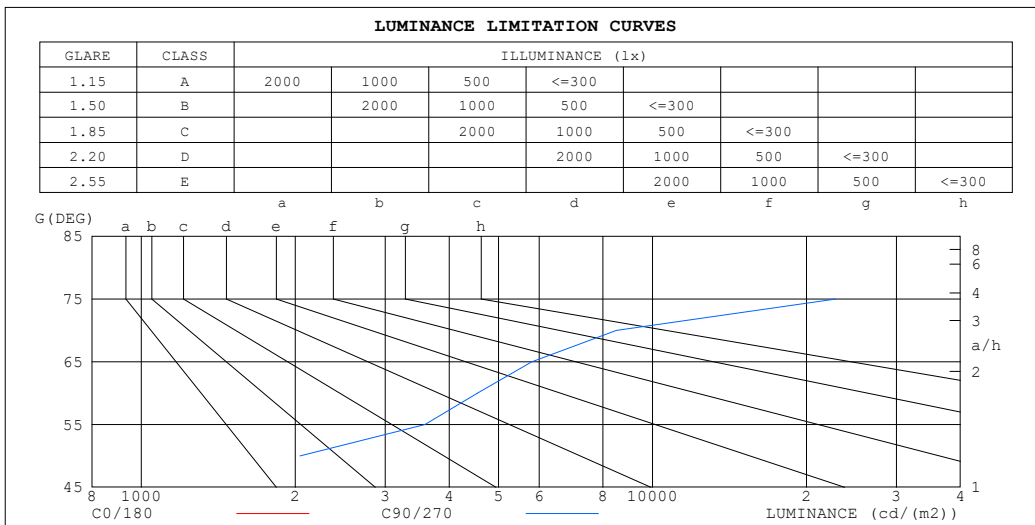
%lum = 7.7%
 %lamp = 7.7%

C Range: 0 - 360DEG
 C Interval: 22.5DEG
 Test Speed: HIGH
 Temperature:25.3°C
 Operators:DAMIN
 Test Date:2023-11-17

γ Range: 0 - 180DEG
 γ Interval: 5.0DEG
 Test System:EVERFINE GO-2000B_V1 SYSTEM V2.00.473
 Humidity:65.0%
 Test Distance:9.401m [K=1.0000]
 Remarks:

LUMINANCE LIMITATION CURVES

Test:U:220.28V I:0.1296A P:27.589W PF:0.9667 Freq:50.00Hz Lamp Flux:3173.38x1 lm		
NAME: 壁灯	TYPE: W系列	WEIGHT:
SPEC.:	DIM.:	SERIAL No.:
MFR.: EVERFINE	SUR.: 156.5mm	Shielding Angle:



LUMINANCE cd/ (m2)		
G (DEG)	C0/180	C90/270
85	49	312193
80	25	92307
75	17	22807
70	13	8496
65	10	5803
60	9	4541
55	8	3586
50	7	2044
45	6	246

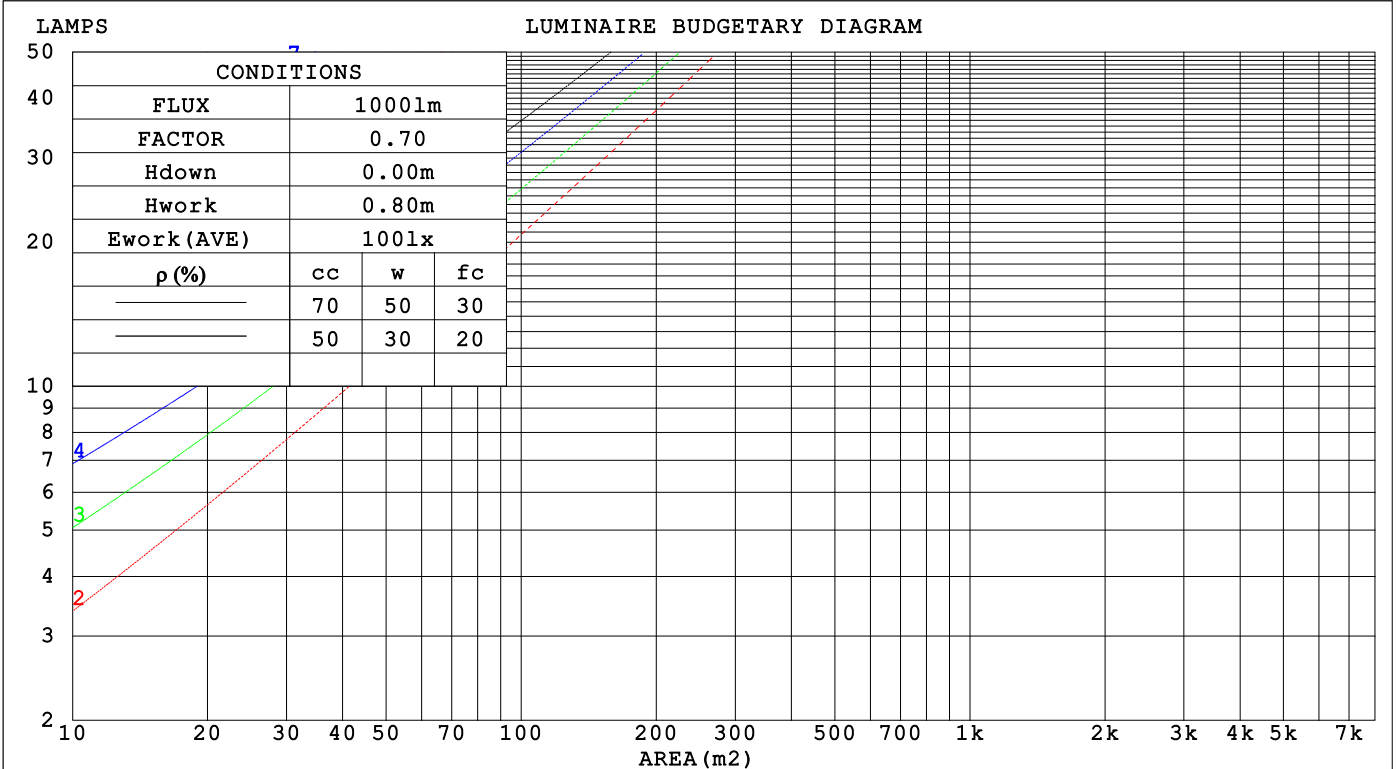
C Range: 0 - 360DEG
 C Interval: 22.5DEG
 Test Speed: HIGH
 Temperature:25.3°C
 Operators:DAMIN
 Test Date:2023-11-17

γ Range: 0 - 180DEG
 γ Interval: 5.0DEG
 Test System:EVERFINE GO-2000B_V1 SYSTEM V2.00.473
 Humidity:65.0%
 Test Distance:9.401m [K=1.0000]
 Remarks:

CU AND LUMINAIRE BUDGETARY ESTIMATE DIAGRAM

Test:U:220.28V I:0.1296A P:27.589W PF:0.9667 Freq:50.00Hz Lamp Flux:3173.38x1 lm		
NAME: 壁灯	TYPE: W系列	WEIGHT:
SPEC.:	DIM.:	SERIAL No.:
MFR.: EVERFINE	SUR.: 156.5mm	Shielding Angle:

ρ_{cc}	80%			70%			50%			30%			10%			0
ρ_w	50%	30%	10%	50%	30%	10%	50%	30%	10%	50%	30%	10%	50%	30%	10%	0
ρ_{fc}	20%			20%			20%			20%			20%			0
RCR	RCR:Room Cavity Ratio						Coefficients of Utilization(CU)									
0.0	1.08	1.08	1.08	1.00	1.00	1.00	.86	.86	.86	.73	.73	.73	.60	.60	.60	.55
1.0	.76	.67	.59	.69	.61	.54	.56	.49	.43	.44	.39	.34	.33	.29	.25	.19
2.0	.62	.51	.42	.56	.46	.38	.44	.37	.30	.34	.28	.22	.24	.19	.15	.10
3.0	.52	.41	.32	.47	.37	.29	.37	.29	.22	.28	.22	.16	.20	.15	.10	.05
4.0	.45	.34	.25	.41	.31	.23	.32	.24	.17	.24	.18	.12	.17	.12	.07	.03
5.0	.40	.29	.21	.36	.26	.19	.28	.20	.14	.21	.15	.10	.15	.10	.06	.02
6.0	.35	.25	.18	.32	.22	.16	.25	.18	.12	.19	.13	.08	.14	.09	.05	.01
7.0	.32	.22	.15	.29	.20	.13	.23	.15	.10	.17	.11	.07	.12	.08	.04	.01
8.0	.29	.19	.13	.26	.17	.11	.21	.14	.09	.16	.10	.06	.11	.07	.03	.01
9.0	.26	.17	.11	.24	.16	.10	.19	.12	.08	.15	.09	.05	.11	.06	.03	.00
10.0	.24	.15	.10	.22	.14	.09	.18	.11	.07	.14	.08	.05	.10	.06	.02	.00



C Range: 0 - 360DEG
 C Interval: 22.5DEG
 Test Speed: HIGH
 Temperature:25.3°C
 Operators:DAMIN
 Test Date:2023-11-17

γ Range: 0 - 180DEG
 γ Interval: 5.0DEG
 Test System:EVERFINE GO-2000B_V1 SYSTEM V2.00.473
 Humidity:65.0%
 Test Distance:9.401m [K=1.0000]
 Remarks:

WEC AND CCEC

Test:U:220.28V I:0.1296A P:27.589W PF:0.9667 Freq:50.00Hz								
Lamp Flux:3173.38x1 lm								
NAME: 壁灯			TYPE: W系列			WEIGHT:		
SPEC.:			DIM.:			SERIAL No.:		
MFR.: EVERFINE			SUR.: 156.5mm			Shielding Angle:		

ρ_{CC}	80%			70%			50%			30%			10%			0
ρ_w	50%	30%	10%	50%	30%	10%	50%	30%	10%	50%	30%	10%	50%	30%	10%	0
ρ_{fc}	20%			20%			20%			20%			20%			0
RCR	RCR:Room Cavity Ratio						Wall Exitance Coefficients(WEC)									
0.0																
1.0	.640	.364	.115	.618	.352	.112	.577	.331	.106	.540	.311	.100	.505	.293	.094	
2.0	.462	.253	.078	.443	.244	.075	.405	.225	.070	.371	.208	.065	.340	.192	.061	
3.0	.373	.199	.059	.355	.190	.057	.321	.174	.053	.290	.159	.049	.261	.145	.045	
4.0	.316	.164	.048	.300	.157	.046	.269	.143	.043	.241	.129	.039	.214	.116	.035	
5.0	.276	.141	.041	.261	.134	.039	.233	.121	.036	.207	.109	.032	.182	.097	.029	
6.0	.246	.123	.035	.232	.117	.034	.206	.106	.031	.182	.094	.028	.159	.084	.025	
7.0	.222	.110	.031	.209	.104	.030	.185	.094	.027	.163	.083	.024	.142	.074	.022	
8.0	.202	.099	.028	.191	.094	.027	.169	.084	.024	.148	.075	.022	.128	.066	.019	
9.0	.186	.090	.025	.175	.085	.024	.155	.076	.022	.135	.068	.019	.117	.059	.017	
10.0	.172	.083	.023	.162	.078	.022	.143	.070	.020	.125	.062	.018	.108	.054	.016	

ρ_{CC}	80%			70%			50%			30%			10%			0
ρ_w	50%	30%	10%	50%	30%	10%	50%	30%	10%	50%	30%	10%	50%	30%	10%	0
ρ_{fc}	20%			20%			20%			20%			20%			0
RCR	RCR:Room Cavity Ratio						Ceiling Cavity Exitance Coefficients(CCEC)									
0.0	.536	.536	.536	.458	.458	.458	.313	.313	.313	.180	.180	.180	.057	.057	.057	
1.0	.552	.502	.457	.472	.431	.393	.323	.296	.272	.186	.172	.158	.060	.055	.051	
2.0	.546	.482	.428	.468	.415	.370	.321	.287	.258	.185	.167	.151	.059	.054	.049	
3.0	.537	.468	.413	.461	.404	.358	.316	.280	.251	.183	.164	.148	.059	.053	.048	
4.0	.528	.457	.403	.453	.395	.350	.312	.275	.246	.180	.161	.146	.058	.052	.048	
5.0	.519	.448	.396	.446	.388	.345	.307	.271	.243	.178	.159	.144	.057	.052	.048	
6.0	.510	.441	.391	.438	.382	.341	.302	.267	.241	.175	.157	.143	.057	.051	.047	
7.0	.502	.435	.388	.432	.377	.338	.298	.264	.239	.173	.156	.143	.056	.051	.047	
8.0	.494	.430	.385	.426	.373	.336	.294	.262	.238	.171	.154	.142	.055	.051	.047	
9.0	.487	.425	.383	.420	.369	.334	.291	.259	.237	.169	.153	.141	.055	.050	.047	
10.0	.481	.421	.381	.415	.366	.332	.288	.257	.236	.168	.152	.141	.054	.050	.047	

C Range: 0 - 360DEG
 C Interval: 22.5DEG
 Test Speed: HIGH
 Temperature:25.3°C
 Operators:DAMIN
 Test Date:2023-11-17

γ Range: 0 - 180DEG
 γ Interval: 5.0DEG
 Test System:EVERFINE GO-2000B_V1 SYSTEM V2.00.473
 Humidity:65.0%
 Test Distance:9.401m [K=1.0000]
 Remarks:

UGR(Unified Glare Rating) Table

Test:U:220.28V I:0.1296A P:27.589W PF:0.9667 Freq:50.00Hz										
Lamp Flux:3173.38x1 lm										
NAME: 壁灯			TYPE: W系列				WEIGHT:			
SPEC.:			DIM.:				SERIAL No.:			
MFR.: EVERFINE			SUR.: 156.5mm				Shielding Angle:			
ceiling/cavity	0.7	0.7	0.5	0.5	0.3	0.7	0.7	0.5	0.5	0.3
walls	0.5	0.3	0.5	0.3	0.3	0.5	0.3	0.5	0.3	0.3
working plane	0.2	0.2	0.2	0.2	0.2	0.2	0.2	0.2	0.2	0.2
Room dimensions	Viewed crosswise					Viewed endwise				
x = 2H y = 2H	-19.8	-18.5	-18.9	-17.6	-16.5	11.3	12.6	12.1	13.5	14.6
3H	-19.1	-18.0	-18.3	-17.0	-15.9	14.5	15.6	15.3	16.6	17.7
4H	-18.6	-17.5	-17.7	-16.5	-15.3	19.5	20.6	20.3	21.5	22.7
6H	-17.9	-16.8	-17.0	-15.9	-14.6	29.0	30.1	29.9	31.1	32.3
8H	-17.4	-16.4	-16.6	-15.4	-14.2	33.4	34.5	34.3	35.4	36.6
12H	-16.9	-15.9	-16.0	-14.9	-13.7	36.8	37.9	37.7	38.8	40.0
4H 2H	1.0	2.1	1.8	3.0	4.2	11.0	12.2	11.9	13.1	14.3
3H	0.6	1.7	1.5	2.6	3.9	15.1	16.1	16.0	17.0	18.3
4H	0.5	1.4	1.4	2.4	3.6	20.0	20.9	20.9	21.9	23.2
6H	0.3	1.2	1.2	2.2	3.4	29.3	30.2	30.3	31.2	32.5
8H	0.2	1.0	1.1	2.0	3.3	33.8	34.7	34.8	35.7	36.9
12H	0.1	0.9	1.0	1.9	3.2	37.6	38.4	38.6	39.4	40.7
8H 4H	7.8	8.7	8.7	9.6	10.9	19.8	20.6	20.7	21.6	22.9
6H	7.7	8.4	8.6	9.4	10.7	29.1	29.9	30.1	30.9	32.2
8H	7.6	8.3	8.5	9.3	10.6	33.7	34.4	34.7	35.4	36.7
12H	7.5	8.1	8.5	9.1	10.5	37.8	38.4	38.8	39.5	40.8
12H 4H	11.5	12.3	12.4	13.3	14.6	19.7	20.5	20.6	21.5	22.8
6H	11.5	12.2	12.5	13.2	14.5	29.0	29.7	30.0	30.8	32.1
8H	11.4	12.1	12.4	13.1	14.4	33.6	34.3	34.6	35.3	36.6
Variations with the observer position at spacings(CIE Pub.117):										
S = 1.0H	+ 0.4 / - 0.4					+ 0.4 / - 0.4				
1.5H	+ 0.9 / - 0.4					+ 1.0 / - 0.8				
2.0H	+ 2.3 / - 1.7					+ 1.4 / - 1.0				

CIE Pub.117, 3173 lm Total Lamp Luminous Flux Correct (8log(F/F0) = 4.0)
 Area: 0.245 m2

C Range: 0 - 360DEG
 C Interval: 22.5DEG
 Test Speed: HIGH
 Temperature:25.3℃
 Operators:DAMIN
 Test Date:2023-11-17

γ Range: 0 - 180DEG
 γ Interval: 5.0DEG
 Test System:EVERFINE GO-2000B_V1 SYSTEM V2.00.473
 Humidity:65.0%
 Test Distance:9.401m [K=1.0000]
 Remarks:

UTILIZATION FACTORS TABLE

Test:U:220.28V I:0.1296A P:27.589W PF:0.9667 Freq:50.00Hz Lamp Flux:3173.38x1 lm		
NAME: 壁灯	TYPE: W系列	WEIGHT:
SPEC.:	DIM.:	SERIAL No.:
MFR.: EVERFINE	SUR.: 156.5mm	Shielding Angle:

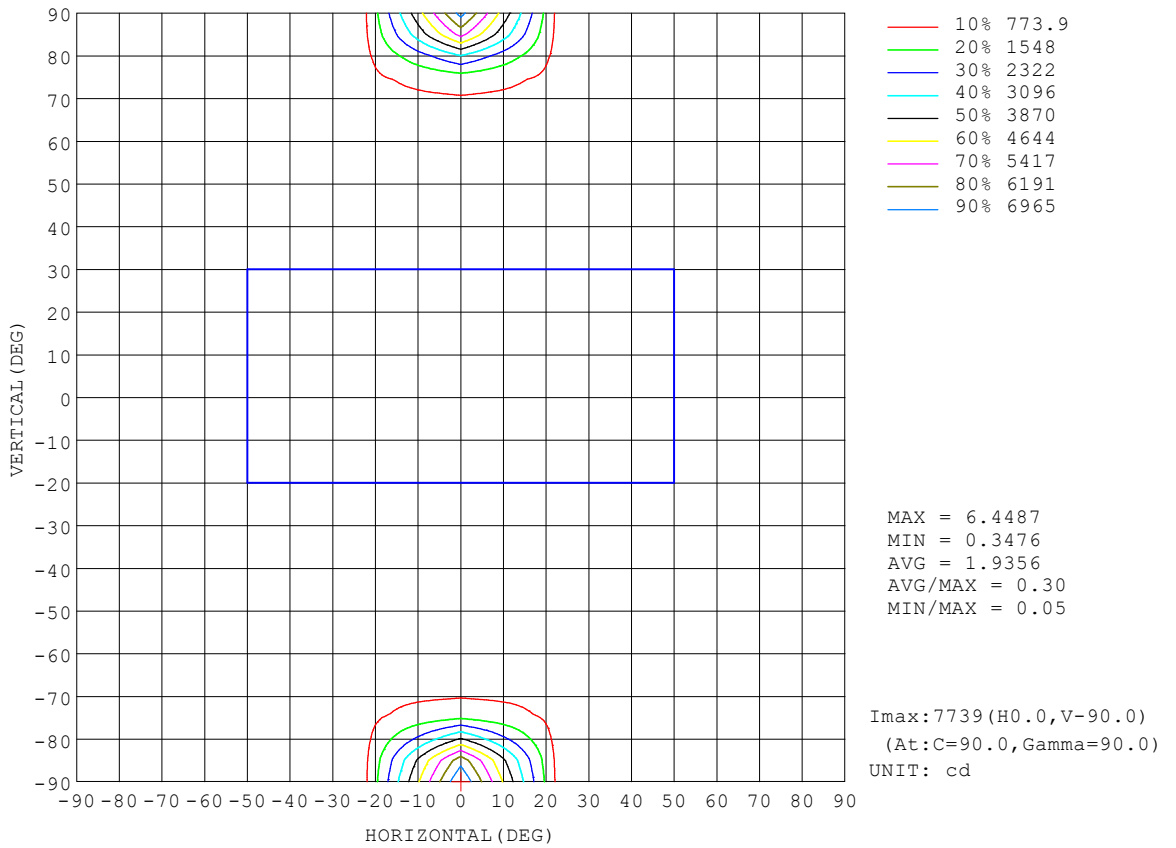
REFLECTANCE										
Ceiling	0.8	0.8	0.8	0.7	0.7	0.7	0.5	0.5	0.5	0
Walls	0.7	0.5	0.3	0.7	0.5	0.3	0.7	0.5	0.3	0
Working plane	0.2	0.2	0.2	0.2	0.2	0.2	0.2	0.2	0.2	0
ROOM INDEX	UTILIZATION FACTORS (PERCENT) $k(RI) \times RCR = 5$									
k = 0.60	30	15	7	28	15	7	26	14	7	-0
0.80	36	20	10	34	19	10	31	18	9	1
1.00	42	25	14	40	23	13	35	24	12	1
1.25	48	30	17	45	28	17	39	25	15	3
1.50	52	34	21	49	32	20	42	28	18	4
2.00	60	42	28	55	39	26	47	34	23	7
2.50	65	47	34	60	44	32	51	38	27	9
3.00	69	52	39	64	49	36	54	42	31	12
4.00	75	60	47	69	55	44	59	47	38	16
5.00	79	65	53	73	61	50	62	51	42	19
ROOM INDEX	UF(total)									Direct
According to DIN EN 13032-2 2004			Suspended				SHRNOM = 1.25			

C Range: 0 - 360DEG
 C Interval: 22.5DEG
 Test Speed: HIGH
 Temperature:25.3°C
 Operators:DAMIN
 Test Date:2023-11-17

γ Range: 0 - 180DEG
 γ Interval: 5.0DEG
 Test System:EVERFINE GO-2000B_V1 SYSTEM V2.00.473
 Humidity:65.0%
 Test Distance:9.401m [K=1.0000]
 Remarks:

ISOCANDELA DIAGRAM

Test:U:220.28V I:0.1296A P:27.589W PF:0.9667 Freq:50.00Hz Lamp Flux:3173.38x1 lm		
NAME: 壁灯	TYPE: W系列	WEIGHT:
SPEC.:	DIM.:	SERIAL No.:
MFR.: EVERFINE	SUR.: 156.5mm	Shielding Angle:

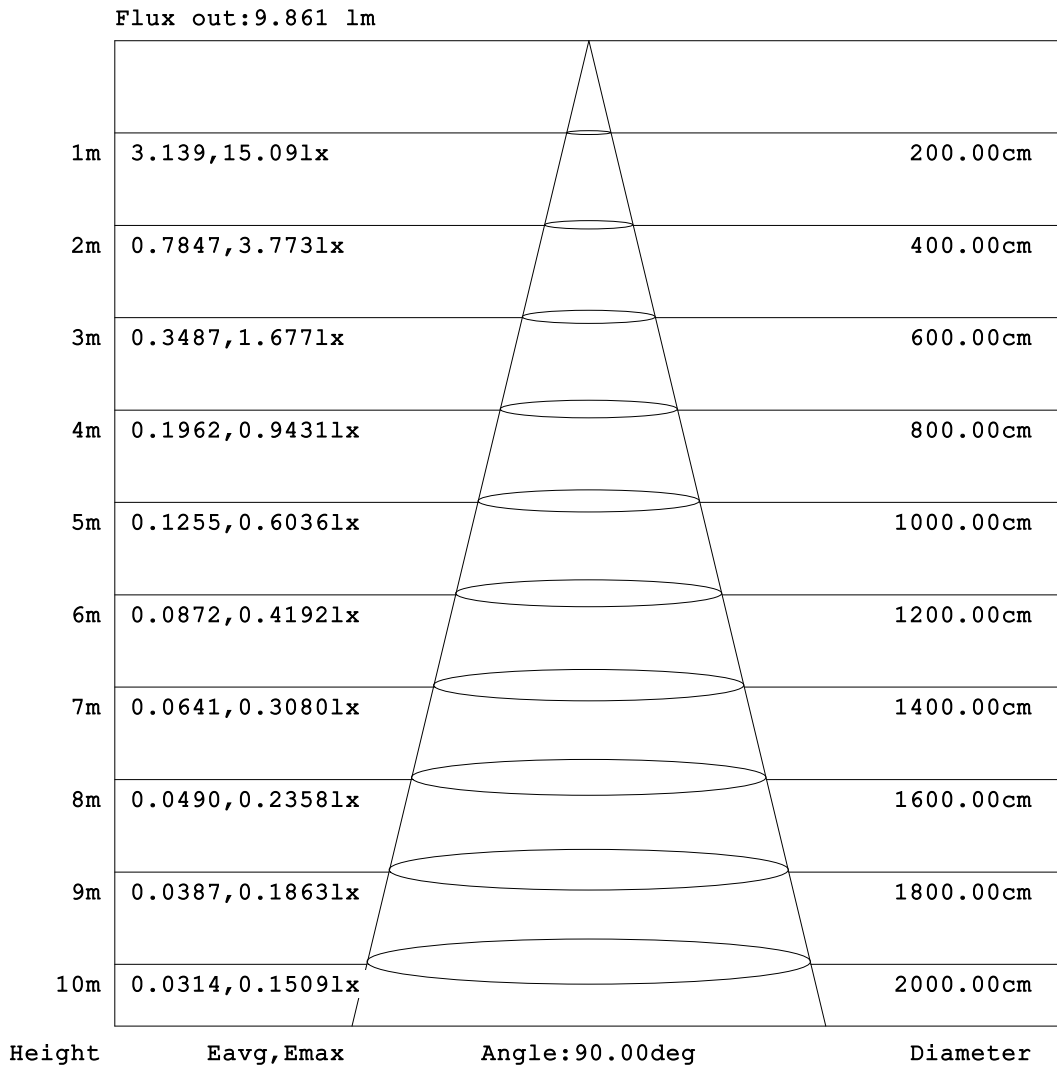


C Range: 0 - 360DEG
 C Interval: 22.5DEG
 Test Speed: HIGH
 Temperature: 25.3°C
 Operators: DAMIN
 Test Date: 2023-11-17

γ Range: 0 - 180DEG
 γ Interval: 5.0DEG
 Test System: EVERFINE GO-2000B_V1 SYSTEM V2.00.473
 Humidity: 65.0%
 Test Distance: 9.401m [K=1.0000]
 Remarks:

AAI Figure

Test:U:220.28V I:0.1296A P:27.589W PF:0.9667 Freq:50.00Hz Lamp Flux:3173.38x1 lm		
NAME: 壁灯	TYPE: W系列	WEIGHT:
SPEC.:	DIM.:	SERIAL No.:
MFR.: EVERFINE	SUR.: 156.5mm	Shielding Angle:



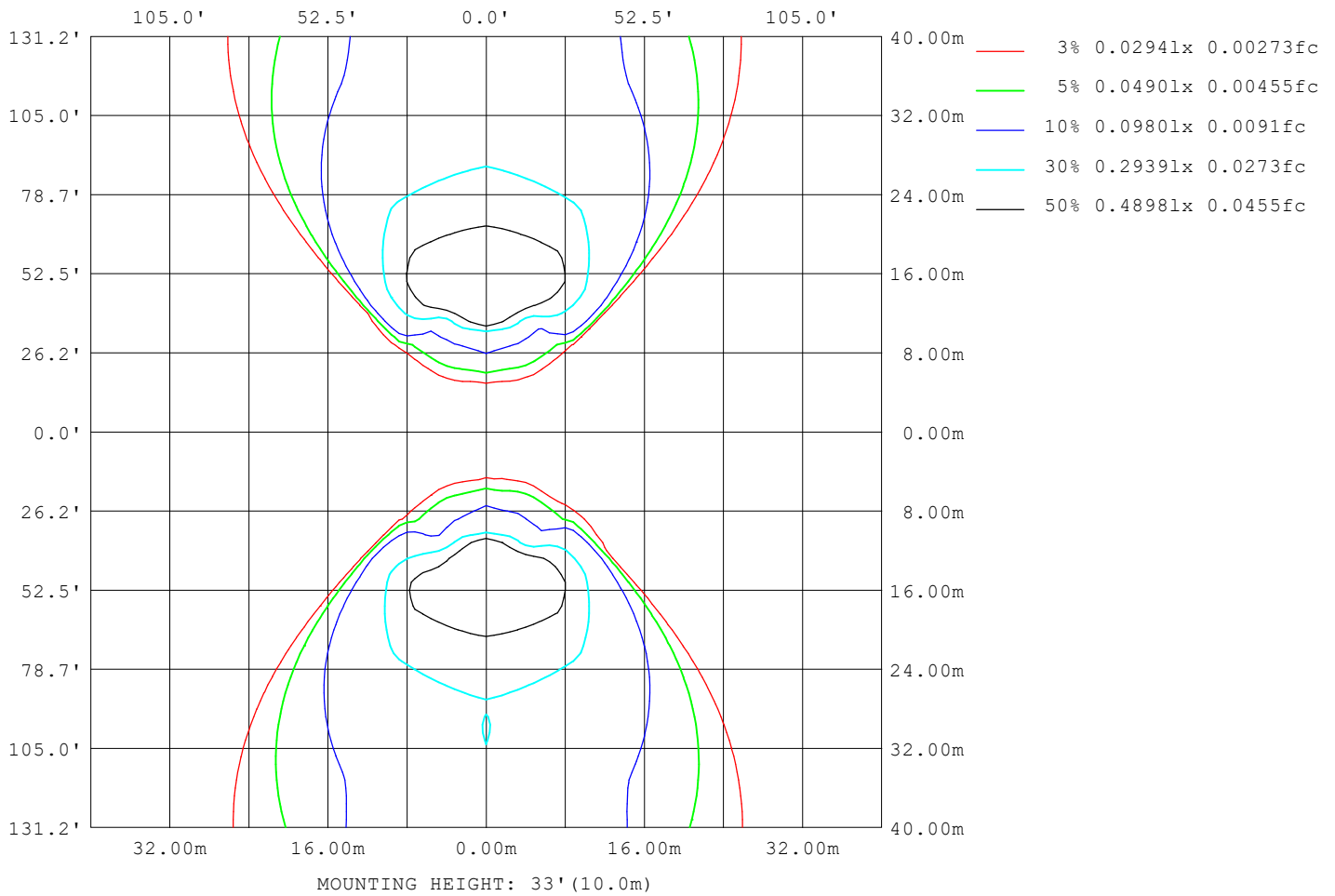
Note: The Curves indicate the illuminated area and the average illumination when the luminaire is at different distance.

C Range: 0 - 360DEG
C Interval: 22.5DEG
Test Speed: HIGH
Temperature: 25.3°C
Operators: DAMIN
Test Date: 2023-11-17

γ Range: 0 - 180DEG
γ Interval: 5.0DEG
Test System: EVERFINE GO-2000B_V1 SYSTEM V2.00.473
Humidity: 65.0%
Test Distance: 9.401m [K=1.0000]
Remarks:

ISOLUX DIAGRAM

Test:U:220.28V I:0.1296A P:27.589W PF:0.9667 Freq:50.00Hz Lamp Flux:3173.38x1 lm		
NAME: 壁灯	TYPE: W系列	WEIGHT:
SPEC.:	DIM.:	SERIAL No.:
MFR.: EVERFINE	SUR.: 156.5mm	Shielding Angle:



C Range: 0 - 360DEG
 C Interval: 22.5DEG
 Test Speed: HIGH
 Temperature:25.3°C
 Operators:DAMIN
 Test Date:2023-11-17

γ Range: 0 - 180DEG
 γ Interval: 5.0DEG
 Test System:EVERFINE GO-2000B_V1 SYSTEM V2.00.473
 Humidity:65.0%
 Test Distance:9.401m [K=1.0000]
 Remarks:

LED Avg.L Report

Test:U:220.28V I:0.1296A P:27.589W PF:0.9667 Freq:50.00Hz Lamp Flux:3173.38x1 lm		
NAME: 壁灯	TYPE: W系列	WEIGHT:
SPEC.:	DIM.:	SERIAL No.:
MFR.: EVERFINE	SUR.: 156.5mm	Shielding Angle:

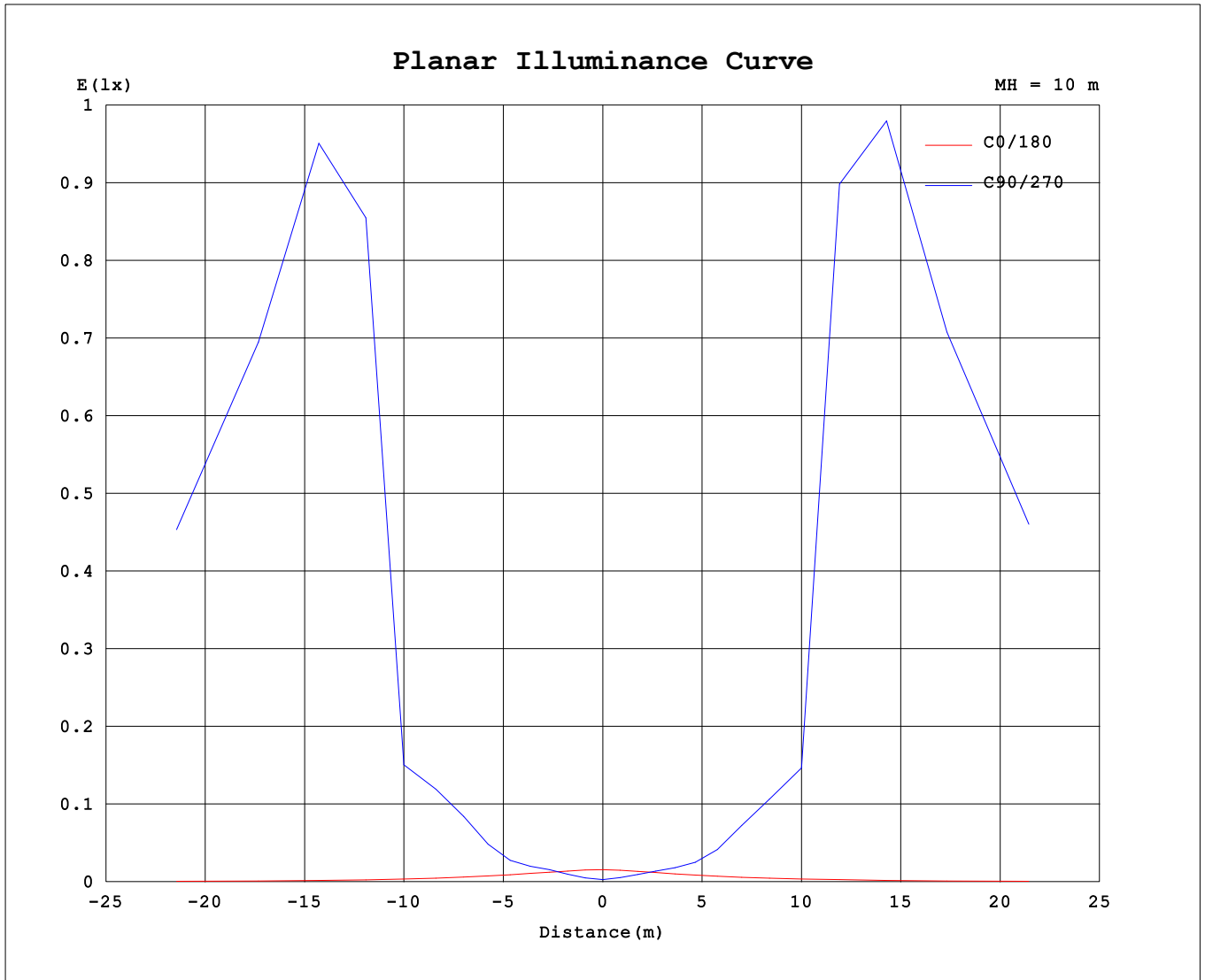
AvgL	cd/m2
L_0~180 (65) av	5
L_0~180 (75) av	8
L_0~180 (85) av	24
L_90~270 (65) av	13176
L_90~270 (75) av	47444
L_90~270 (85) av	651825
L_45 (65) av	325
L_45 (75) av	713
L_45 (85) av	2674

Standard: GB/T 29293-2012

C Range: 0 - 360DEG
 C Interval: 22.5DEG
 Test Speed: HIGH
 Temperature:25.3℃
 Operators:DAMIN
 Test Date:2023-11-17

γ Range: 0 - 180DEG
 γ Interval: 5.0DEG
 Test System:EVERFINE GO-2000B_V1 SYSTEM V2.00.473
 Humidity:65.0%
 Test Distance:9.401m [K=1.0000]
 Remarks:

Planar Illuminance Curve



C Range: 0 - 360DEG
 C Interval: 22.5DEG
 Test Speed: HIGH
 Temperature: 25.3°C
 Operators: DAMIN
 Test Date: 2023-11-17

γ Range: 0 - 180DEG
 γ Interval: 5.0DEG
 Test System: EVERFINE GO-2000B_V1 SYSTEM V2.00.473
 Humidity: 65.0%
 Test Distance: 9.401m [K=1.0000]
 Remarks:

LUMINOUS DISTRIBUTION INTENSITY DATA

Test:U:220.28V I:0.1296A P:27.589W PF:0.9667 Freq:50.00Hz Lamp Flux:3173.38x1 lm		
NAME: 壁灯	TYPE: W系列	WEIGHT:
SPEC.:	DIM.:	SERIAL No.:
MFR.: EVERFINE	SUR.: 156.5mm	Shielding Angle:

Table--1

UNIT: X10cd

C (DEG) \ γ (DEG)	0	22.5	45	67.5	90	112.5	135	157.5	180	202.5	225	247.5	270	292.5	315	337.5			
0	0.07	0.07	0.07	0.07	0.07	0.07	0.07	0.07	0.07	0.07	0.07	0.07	0.07	0.07	0.07	0.07			
5	0.07	0.07	0.08	0.13	0.12	0.12	0.09	0.08	0.07	0.07	0.09	0.11	0.13	0.11	0.09	0.07			
10	0.07	0.07	0.12	0.22	0.23	0.21	0.13	0.09	0.07	0.08	0.13	0.19	0.23	0.19	0.13	0.07			
15	0.07	0.07	0.18	0.35	0.39	0.34	0.18	0.10	0.06	0.10	0.17	0.29	0.35	0.30	0.17	0.06			
20	0.06	0.08	0.23	0.49	0.55	0.48	0.24	0.11	0.06	0.11	0.22	0.40	0.50	0.43	0.22	0.06			
25	0.06	0.09	0.30	0.68	0.85	0.65	0.30	0.12	0.06	0.12	0.28	0.58	0.76	0.61	0.28	0.07			
30	0.06	0.11	0.38	1.12	1.69	1.04	0.36	0.13	0.05	0.13	0.34	0.97	1.45	1.01	0.35	0.07			
35	0.05	0.12	0.50	2.25	3.46	2.03	0.45	0.14	0.05	0.15	0.45	1.92	2.99	1.93	0.47	0.08			
40	0.05	0.14	0.73	4.17	5.99	3.66	0.61	0.15	0.05	0.16	0.66	3.52	5.35	3.58	0.66	0.09			
45	0.05	0.15	1.13	6.37	9.62	5.65	0.91	0.17	0.05	0.18	1.01	5.63	9.36	5.84	0.96	0.10			
50	0.05	0.17	1.68	10.07	17.25	8.36	1.34	0.18	0.05	0.20	1.51	9.86	17.2	9.43	1.42	0.11			
55	0.05	0.18	2.36	12.0	21.4	11.4	1.88	0.19	0.05	0.22	2.17	13.6	24.9	11.7	2.04	0.12			
60	0.05	0.19	3.06	16.0	28.5	15.4	2.49	0.21	0.05	0.24	2.84	17.0	31.8	15.9	2.71	0.13			
65	0.05	0.21	3.60	19.0	34.5	18.4	3.03	0.22	0.05	0.26	3.48	20.4	38.7	19.1	3.34	0.14			
70	0.05	0.22	4.13	22.0	40.5	21.4	3.47	0.23	0.05	0.28	4.17	23.8	45.6	22.3	3.99	0.15			
75	0.05	0.23	4.66	25.0	46.5	24.4	3.92	0.24	0.05	0.29	4.95	27.2	52.5	25.5	4.56	0.16			
80	0.05	0.23	5.11	28.0	52.5	27.4	4.39	0.24	0.05	0.31	5.51	30.6	59.4	28.7	5.10	0.17			
85	0.05	0.23	5.35	31.0	58.5	30.4	4.73	0.24	0.05	0.32	7.31	34.0	66.3	31.9	5.45	0.17			
90	0.05	0.23	5.44	34.0	64.5	33.4	4.85	0.24	0.05	0.32	8.63	37.4	73.2	35.1	5.57	0.17			
95	0.05	0.22	5.12	37.0	70.5	36.4	4.67	0.24	0.05	0.31	7.75	40.8	80.1	38.3	5.44	0.17			
100	0.05	0.19	4.77	40.0	76.5	39.4	4.31	0.22	0.05	0.28	5.72	44.2	87.0	41.5	5.02	0.15			
105	0.05	0.15	4.21	43.0	82.5	42.4	3.79	0.18	0.05	0.23	4.89	47.6	93.9	44.7	4.22	0.12			
110	0.05	0.12	3.01	46.0	88.5	45.4	2.73	0.16	0.05	0.20	3.15	51.0	100.8	47.9	2.78	0.09			
115	0.05	0.09	2.03	49.0	94.5	48.4	1.97	0.15	0.05	0.20	2.26	54.4	107.7	51.1	1.94	0.07			
120	0.05	0.09	1.09	52.0	100.5	51.4	1.06	0.15	0.05	0.20	1.29	57.8	114.6	54.3	1.06	0.07			
125	0.05	0.10	0.68	55.0	106.5	54.4	0.78	0.15	0.05	0.21	0.88	61.2	121.5	57.5	0.79	0.08			
130	0.04	0.10	0.57	58.0	112.5	57.4	0.67	0.14	0.05	0.21	0.75	64.6	128.4	60.7	0.67	0.08			
135	0.04	0.08	0.51	61.0	118.5	60.4	0.62	0.11	0.05	0.16	0.72	68.0	135.3	63.9	0.60	0.06			
140	0.04	0.04	0.41	64.0	124.5	63.4	0.49	0.08	0.04	0.11	0.59	71.4	142.2	67.1	0.49	0.04			
145	0.04	0.04	0.34	67.0	130.5	66.4	0.40	0.08	0.04	0.11	0.45	74.8	149.1	70.3	0.39	0.03			
150	0.04	0.03	0.30	70.0	136.5	69.4	0.34	0.06	0.04	0.10	0.23	78.2	156.0	73.5	0.19	0.03			
155	0.04	0.02	0.25	73.0	142.5	72.4	0.27	0.05	0.04	0.08	0.14	81.6	162.9	76.7	0.14	0.02			
160	0.04	0.02	0.18	76.0	148.5	75.4	0.18	0.05	0.04	0.07	0.11	85.0	169.8	79.9	0.10	0.02			
165	0.04	0.03	0.04	79.0	154.5	78.4	0.19	0.06	0.04	0.06	0.04	88.4	176.7	83.1	0.03	0.02			
170	0.04	0.04	0.03	82.0	160.5	81.4	0.04	0.04	0.03	0.06	0.04	91.8	183.6	86.3	0.03	0.03			
175	0.04	0.05	0.03	85.0	166.5	84.4	0.02	0.04	0.03	0.06	0.04	95.2	190.5	89.5	0.04	0.04			
180	0.04	0.05	0.03	88.0	172.5	87.4	0.01	0.04	0.03	0.05	0.03	98.6	197.4	92.7	0.03	0.04			

C Range: 0 - 360DEG
 C Interval: 22.5DEG
 Test Speed: HIGH
 Temperature:25.3℃
 Operators:DAMIN
 Test Date:2023-11-17

γ Range: 0 - 180DEG
 γ Interval: 5.0DEG
 Test System:EVERFINE GO-2000B_V1 SYSTEM V2.00.473
 Humidity:65.0%
 Test Distance:9.401m [K=1.0000]
 Remarks: