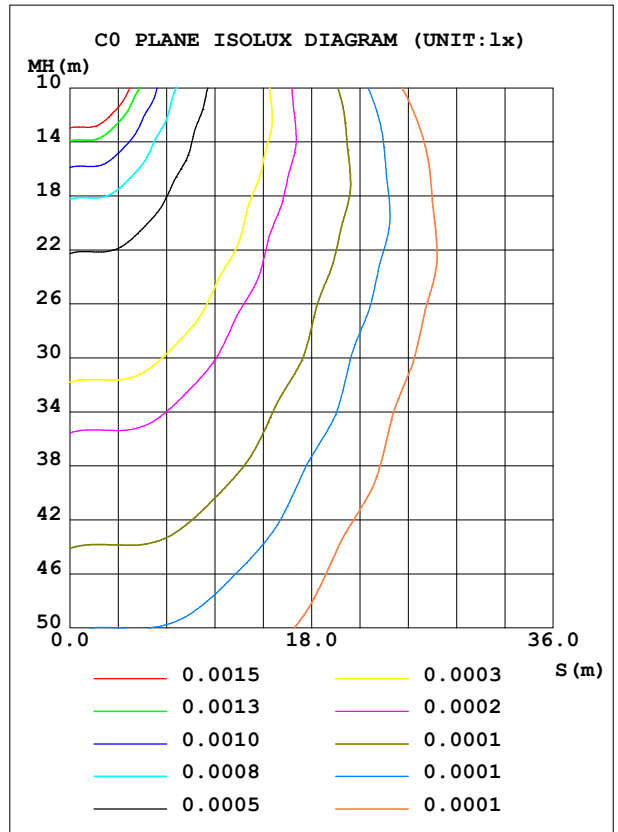
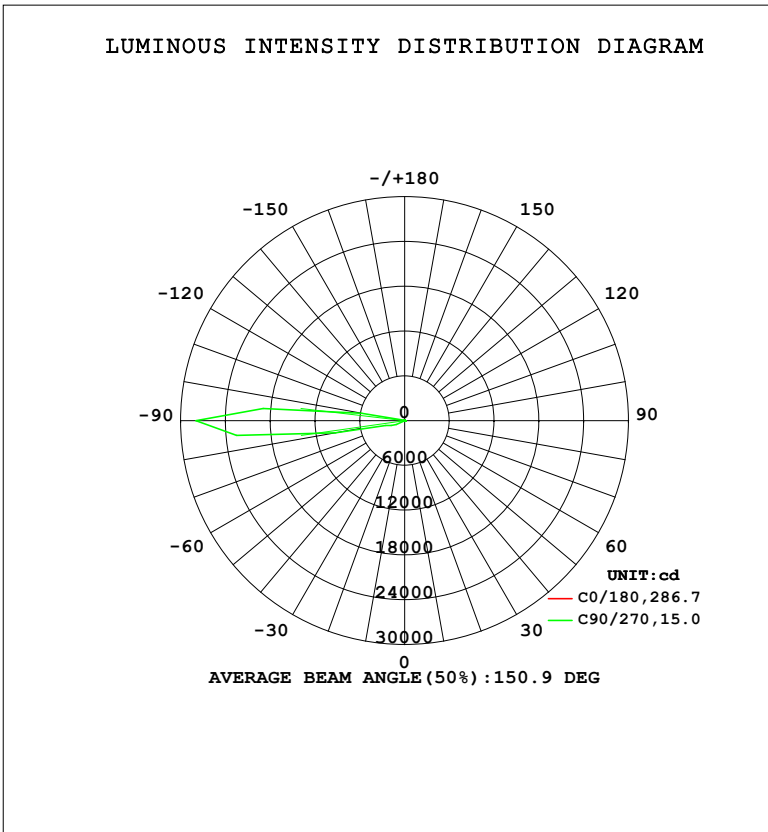


LUMINAIRE PHOTOMETRIC TEST REPORT

Test:U:220.34V I:0.0471A P:5.1812W PF:0.4988 Freq:50.00Hz Lamp Flux:469.47lx1 lm		
NAME: 壁灯	TYPE: W系列	WEIGHT:
SPEC.:	DIM.:	SERIAL No.:
MFR.: EVERFINE	SUR.:	Shielding Angle:

DATA OF LAMP		PHOTOMETRIC DATA				Eff: 90.61 lm/W
MODEL	W08B	I _{max} (cd)	27985	S/MH (C0/180)	0.88	
NOMINAL POWER (W)	5	LOR (%)	100.0	S/MH (C90/270)	0.02	
RATED VOLTAGE (V)	220	TOTAL FLUX (lm)	469.47	η UP, DN (C0-180)	0.4, 0.4	
NOMINAL FLUX (lm)	469.471	CIE CLASS	DIFFUSE	η UP, DN (C180-360)	43.3, 56.0	
LAMPS INSIDE	1	η up (%)	43.6	CIBSE SHR NOM	0.00	
TEST VOLTAGE (V)	219.5	η down (%)	56.4	CIBSE SHR MAX	0.00	



C Range: 0 - 360DEG
 C Interval: 22.5DEG
 Test Speed: HIGH
 Temperature: 25.3°C
 Operators: DAMIN
 Test Date: 2023-11-17

γ Range: 0 - 180DEG
 γ Interval: 5.0DEG
 Test System: EVERFINE GO-2000B_V1 SYSTEM V2.00.473
 Humidity: 65.0%
 Test Distance: 9.401m [K=1.0000]
 Remarks:

ZONAL FLUX DIAGRAM

ZONAL FLUX DIAGRAM:

γ	C0	C45	C90	C135	C180	C225	C270	C315	γ	Φ zone	Φ total	%lum,lamp
10	0.0050	0.0050	0.0050	0.0050	0.0042	0.0341	0.1986	0.0453	0- 10	0.0069	0.0069	0.00,0.00
20	0.0043	0.0025	0.0050	0.0034	0.0035	0.0719	0.4218	0.0939	10- 20	0.0388	0.0458	0.01,0.01
30	0.0036	0	0.0050	0.0034	0.0032	0.1172	0.7839	0.1426	20- 30	0.1047	0.1505	0.03,0.03
40	0.0031	0	0.0642	0.0034	0.0032	0.1676	1.509	0.2030	30- 40	0.2315	0.3819	0.08,0.08
50	0.0030	0.0038	0.8662	0.0034	0.0032	0.2382	3.416	0.2902	40- 50	0.5204	0.9023	0.19,0.19
60	0.0029	0.0264	1.814	0.0100	0.0032	0.3189	19.82	0.4077	50- 60	1.509	2.411	0.51,0.51
70	0.0029	0.0504	2.156	0.0369	0.0032	0.4071	191.9	0.5670	60- 70	11.47	13.88	2.96,2.96
80	0.0029	0.0705	2.325	0.0670	0.0032	0.4776	946.9	0.7127	70- 80	50.44	64.32	13.7,13.7
90	0.0029	0.0756	2.112	0.0838	0.0032	0.4863	2798	0.6992	80- 90	200.2	264.6	56.4,56.4
100	0.0029	0.0769	1.750	0.0972	0.0030	0.3386	584.5	0.5077	90-100	177.5	442.0	94.2,94.2
110	0.0029	0.0756	1.657	0.1023	0.0026	0.1170	13.52	0.1775	100-110	23.22	465.3	99.1,99.1
120	0.0028	0.0479	1.330	0.0805	0.0023	0.1386	20.46	0.2315	110-120	2.580	467.8	99.7,99.7
130	0.0026	0.0164	1.008	0.0319	0.0020	0.2229	1.195	0.2732	120-130	0.9759	468.8	99.9,99.9
140	0.0025	0.0076	0.3189	0.0118	0.0020	0.1738	1.165	0.1843	130-140	0.3978	469.2	99.9,99.9
150	0.0025	0	0.0647	0.0034	0.0012	0.0380	0.7284	0.0403	140-150	0.1901	469.4	100,100
160	0.0025	0	0	0.0017	0.0012	0	0.3914	0	150-160	0.0459	469.5	100,100
170	0.0025	0	0	0	0.0012	0	0.0002	0	160-170	0.0117	469.5	100,100
180	0.0013	0	0	0	0.0012	0	0	0	170-180	0.0024	469.5	100,100
DEG	LUMINOUS INTENSITY:X10cd									UNIT:lm		

Conical surface Flux(90deg): 0.58563 lm

%lum = 0.1%

%lamp = 0.1%

Conical surface Flux(130deg): 5.9522 lm

%lum = 1.3%

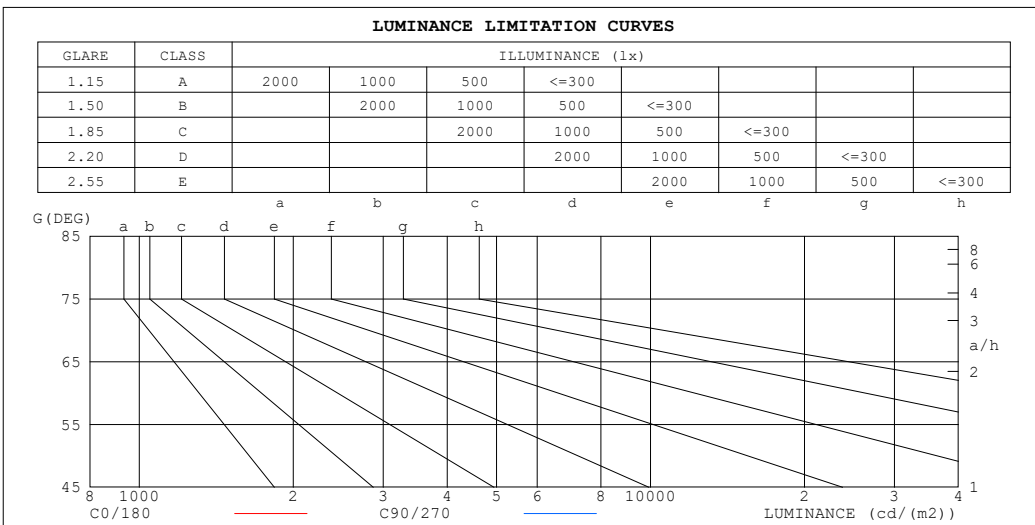
%lamp = 1.3%

C Range: 0 - 360DEG
 C Interval: 22.5DEG
 Test Speed: HIGH
 Temperature:25.3°C
 Operators:DAMIN
 Test Date:2023-11-17

γ Range: 0 - 180DEG
 γ Interval: 5.0DEG
 Test System:EVERFINE GO-2000B_V1 SYSTEM V2.00.473
 Humidity:65.0%
 Test Distance:9.401m [K=1.0000]
 Remarks:

LUMINANCE LIMITATION CURVES

Test:U:220.34V I:0.0471A P:5.1812W PF:0.4988 Freq:50.00Hz Lamp Flux:469.471x1 lm		
NAME: 壁灯	TYPE: W系列	WEIGHT:
SPEC.:	DIM.:	SERIAL No.:
MFR.: EVERFINE	SUR.:	Shielding Angle:



LUMINANCE cd/(m2)		
G (DEG)	C0/180	C90/270
85	17	313
80	8	163
75	6	107
70	4	77
65	3	58
60	3	44
55	3	31
50	2	16
45	2	6

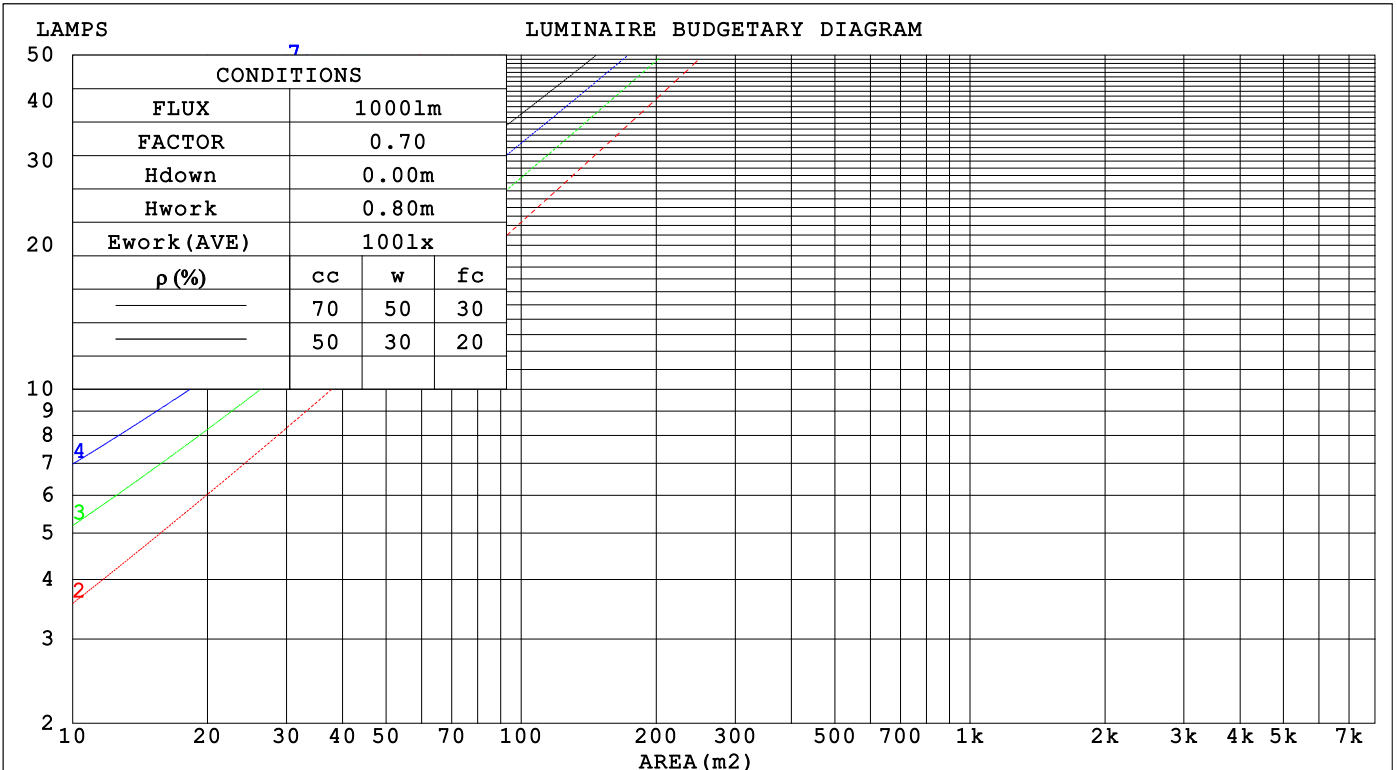
C Range: 0 - 360DEG
 C Interval: 22.5DEG
 Test Speed: HIGH
 Temperature: 25.3°C
 Operators: DAMIN
 Test Date: 2023-11-17

γ Range: 0 - 180DEG
 γ Interval: 5.0DEG
 Test System: EVERFINE GO-2000B_V1 SYSTEM V2.00.473
 Humidity: 65.0%
 Test Distance: 9.401m [K=1.0000]
 Remarks:

CU AND LUMINAIRE BUDGETARY ESTIMATE DIAGRAM

Test:U:220.34V I:0.0471A P:5.1812W PF:0.4988 Freq:50.00Hz Lamp Flux:469.47lx1 lm		
NAME: 壁灯	TYPE: W系列	WEIGHT:
SPEC.:	DIM.:	SERIAL No.:
MFR.: EVERFINE	SUR.:	Shielding Angle:

ρ_{cc}	80%			70%			50%			30%			10%			0
ρ_w	50%	30%	10%	50%	30%	10%	50%	30%	10%	50%	30%	10%	50%	30%	10%	0
ρ_{fc}	20%			20%			20%			20%			20%			0
RCR	RCR:Room Cavity Ratio						Coefficients of Utilization(CU)									
0.0	1.09	1.09	1.09	1.01	1.01	1.01	.87	.87	.87	.74	.74	.74	.62	.62	.62	.56
1.0	.71	.61	.51	.64	.55	.46	.51	.44	.37	.39	.33	.28	.28	.24	.19	.13
2.0	.58	.46	.36	.52	.41	.32	.41	.32	.24	.30	.23	.17	.21	.15	.10	.05
3.0	.49	.37	.28	.44	.33	.25	.35	.26	.18	.26	.19	.13	.17	.12	.07	.02
4.0	.43	.31	.22	.39	.28	.20	.30	.22	.15	.23	.16	.10	.15	.10	.05	.01
5.0	.38	.27	.19	.34	.24	.17	.27	.19	.12	.20	.14	.08	.14	.09	.04	.01
6.0	.34	.24	.16	.31	.21	.14	.24	.17	.11	.19	.12	.07	.13	.08	.04	.00
7.0	.31	.21	.14	.28	.19	.12	.22	.15	.09	.17	.11	.06	.12	.07	.03	.00
8.0	.28	.19	.12	.25	.17	.11	.20	.13	.08	.16	.10	.05	.11	.06	.03	.00
9.0	.26	.17	.11	.23	.15	.09	.19	.12	.07	.15	.09	.05	.11	.06	.02	.00
10.0	.23	.15	.09	.21	.14	.08	.17	.11	.06	.14	.08	.04	.10	.05	.02	.00



C Range: 0 - 360DEG
 C Interval: 22.5DEG
 Test Speed: HIGH
 Temperature:25.3°C
 Operators:DAMIN
 Test Date:2023-11-17

γ Range: 0 - 180DEG
 γ Interval: 5.0DEG
 Test System:EVERFINE GO-2000B_V1 SYSTEM V2.00.473
 Humidity:65.0%
 Test Distance:9.401m [K=1.0000]
 Remarks:

WEC AND CCEC

Test:U:220.34V I:0.0471A P:5.1812W PF:0.4988 Freq:50.00Hz		
Lamp Flux:469.471x1 lm		
NAME: 壁灯	TYPE: W系列	WEIGHT:
SPEC.:	DIM.:	SERIAL No.:
MFR.: EVERFINE	SUR.:	Shielding Angle:

ρ_{CC}	80%			70%			50%			30%			10%			0
ρ_w	50%	30%	10%	50%	30%	10%	50%	30%	10%	50%	30%	10%	50%	30%	10%	0
ρ_{fc}	20%			20%			20%			20%			20%			0
RCR	RCR:Room Cavity Ratio						Wall Exitance Coefficients (WEC)									
0.0																
1.0	.739	.420	.133	.718	.409	.130	.678	.389	.124	.641	.370	.119	.607	.352	.113	
2.0	.505	.277	.085	.485	.267	.082	.449	.249	.077	.415	.233	.073	.384	.217	.068	
3.0	.395	.210	.063	.377	.202	.061	.344	.186	.057	.313	.172	.053	.285	.158	.049	
4.0	.329	.171	.050	.313	.164	.048	.282	.150	.045	.254	.137	.041	.228	.124	.038	
5.0	.284	.145	.042	.269	.138	.040	.242	.126	.037	.216	.114	.034	.192	.102	.031	
6.0	.251	.126	.036	.237	.120	.035	.212	.109	.032	.188	.098	.029	.166	.087	.026	
7.0	.225	.111	.032	.213	.106	.030	.190	.096	.028	.168	.086	.025	.147	.076	.022	
8.0	.205	.100	.028	.194	.095	.027	.172	.086	.025	.152	.077	.022	.132	.068	.020	
9.0	.188	.091	.025	.178	.087	.024	.157	.078	.022	.139	.069	.020	.121	.061	.018	
10.0	.174	.083	.023	.164	.079	.022	.145	.071	.020	.128	.063	.018	.111	.056	.016	

ρ_{CC}	80%			70%			50%			30%			10%			0
ρ_w	50%	30%	10%	50%	30%	10%	50%	30%	10%	50%	30%	10%	50%	30%	10%	0
ρ_{fc}	20%			20%			20%			20%			20%			0
RCR	RCR:Room Cavity Ratio						Ceiling Cavity Exitance Coefficients (CCEC)									
0.0	.523	.523	.523	.447	.447	.447	.305	.305	.305	.175	.175	.175	.056	.056	.056	
1.0	.545	.488	.436	.467	.419	.375	.319	.288	.259	.184	.167	.151	.059	.054	.049	
2.0	.538	.468	.410	.461	.403	.354	.316	.279	.247	.182	.162	.145	.058	.052	.047	
3.0	.528	.455	.396	.453	.392	.343	.311	.272	.241	.179	.159	.142	.058	.052	.046	
4.0	.517	.444	.387	.444	.383	.336	.305	.267	.237	.177	.156	.140	.057	.051	.046	
5.0	.507	.435	.381	.436	.376	.332	.300	.263	.234	.174	.154	.139	.056	.050	.046	
6.0	.498	.427	.377	.428	.370	.328	.295	.259	.232	.171	.152	.138	.055	.050	.046	
7.0	.489	.421	.373	.421	.365	.325	.291	.256	.231	.169	.151	.137	.055	.049	.045	
8.0	.482	.416	.371	.415	.361	.323	.287	.253	.229	.167	.149	.137	.054	.049	.045	
9.0	.474	.411	.369	.409	.357	.322	.283	.251	.228	.165	.148	.136	.053	.049	.045	
10.0	.468	.407	.367	.403	.354	.320	.280	.249	.228	.163	.147	.136	.053	.048	.045	

C Range: 0 - 360DEG
 C Interval: 22.5DEG
 Test Speed: HIGH
 Temperature:25.3°C
 Operators:DAMIN
 Test Date:2023-11-17

γ Range: 0 - 180DEG
 γ Interval: 5.0DEG
 Test System:EVERFINE GO-2000B_V1 SYSTEM V2.00.473
 Humidity:65.0%
 Test Distance:9.401m [K=1.0000]
 Remarks:

UGR(Unified Glare Rating) Table

Test:U:220.34V I:0.0471A P:5.1812W PF:0.4988 Freq:50.00Hz										
Lamp Flux:469.47lx1 lm										
NAME: 壁灯			TYPE: W系列				WEIGHT:			
SPEC.:			DIM.:				SERIAL No.:			
MFR.: EVERFINE			SUR.:				Shielding Angle:			
ceiling/cavity	0.7	0.7	0.5	0.5	0.3	0.7	0.7	0.5	0.5	0.3
walls	0.5	0.3	0.5	0.3	0.3	0.5	0.3	0.5	0.3	0.3
working plane	0.2	0.2	0.2	0.2	0.2	0.2	0.2	0.2	0.2	0.2
Room dimensions	Viewed crosswise					Viewed endwise				
x = 2H y = 2H	-33.1	-31.7	-32.3	-30.9	-29.8	-10.5	-9.2	-9.7	-8.3	-7.2
3H	-28.9	-27.7	-28.1	-26.8	-25.6	-5.5	-4.3	-4.7	-3.4	-2.3
4H	-26.4	-25.2	-25.6	-24.3	-23.1	-3.2	-2.0	-2.3	-1.0	0.1
6H	-23.6	-22.4	-22.7	-21.5	-20.3	-0.7	0.4	0.1	1.3	2.5
8H	-22.0	-20.9	-21.1	-19.9	-18.7	0.5	1.7	1.4	2.6	3.8
12H	-20.2	-19.1	-19.4	-18.2	-17.0	1.9	3.0	2.8	3.9	5.1
4H 2H	-20.5	-19.3	-19.6	-18.4	-17.2	-10.8	-9.6	-9.9	-8.6	-7.5
3H	-20.5	-19.4	-19.6	-18.5	-17.2	-5.2	-4.1	-4.3	-3.2	-2.0
4H	-20.4	-19.3	-19.5	-18.4	-17.1	-2.4	-1.4	-1.6	-0.5	0.8
6H	-19.8	-18.9	-18.9	-17.9	-16.6	0.3	1.3	1.2	2.3	3.5
8H	-19.2	-18.3	-18.3	-17.3	-16.0	1.8	2.7	2.7	3.7	4.9
12H	-18.2	-17.3	-17.2	-16.3	-15.0	3.3	4.2	4.2	5.1	6.4
8H 4H	-13.2	-12.2	-12.3	-11.3	-10.0	-2.6	-1.6	-1.7	-0.7	0.6
6H	-13.2	-12.3	-12.2	-11.3	-10.0	0.6	1.5	1.6	2.5	3.8
8H	-13.1	-12.3	-12.2	-11.3	-10.0	2.4	3.2	3.3	4.2	5.5
12H	-13.0	-12.2	-12.0	-11.2	-9.9	4.3	5.0	5.2	6.0	7.4
12H 4H	-10.3	-9.4	-9.4	-8.4	-7.2	-2.7	-1.8	-1.8	-0.8	0.5
6H	-10.1	-9.3	-9.2	-8.3	-7.0	0.6	1.3	1.5	2.4	3.7
8H	-10.1	-9.3	-9.1	-8.3	-7.0	2.4	3.2	3.4	4.2	5.5
Variations with the observer position at spacings(CIE Pub.117):										
S = 1.0H	+ 0.2 / - 0.2					+ 0.1 / - 0.1				
1.5H	+ 0.4 / - 0.1					+ 0.3 / - 0.3				
2.0H	+ 0.7 / - 0.8					+ 0.4 / - 0.4				

CIE Pub.117, 469.5 lm Total Lamp Luminous Flux Correct (8log(F/F0) = -2.6)
 Area: 0.1 m2

C Range: 0 - 360DEG
 C Interval: 22.5DEG
 Test Speed: HIGH
 Temperature:25.3°C
 Operators:DAMIN
 Test Date:2023-11-17

γ Range: 0 - 180DEG
 γ Interval: 5.0DEG
 Test System:EVERFINE GO-2000B_V1 SYSTEM V2.00.473
 Humidity:65.0%
 Test Distance:9.401m [K=1.0000]
 Remarks:

UTILIZATION FACTORS TABLE

Test:U:220.34V I:0.0471A P:5.1812W PF:0.4988 Freq:50.00Hz Lamp Flux:469.471x1 lm		
NAME: 壁灯	TYPE: W系列	WEIGHT:
SPEC.:	DIM.:	SERIAL No.:
MFR.: EVERFINE	SUR.:	Shielding Angle:

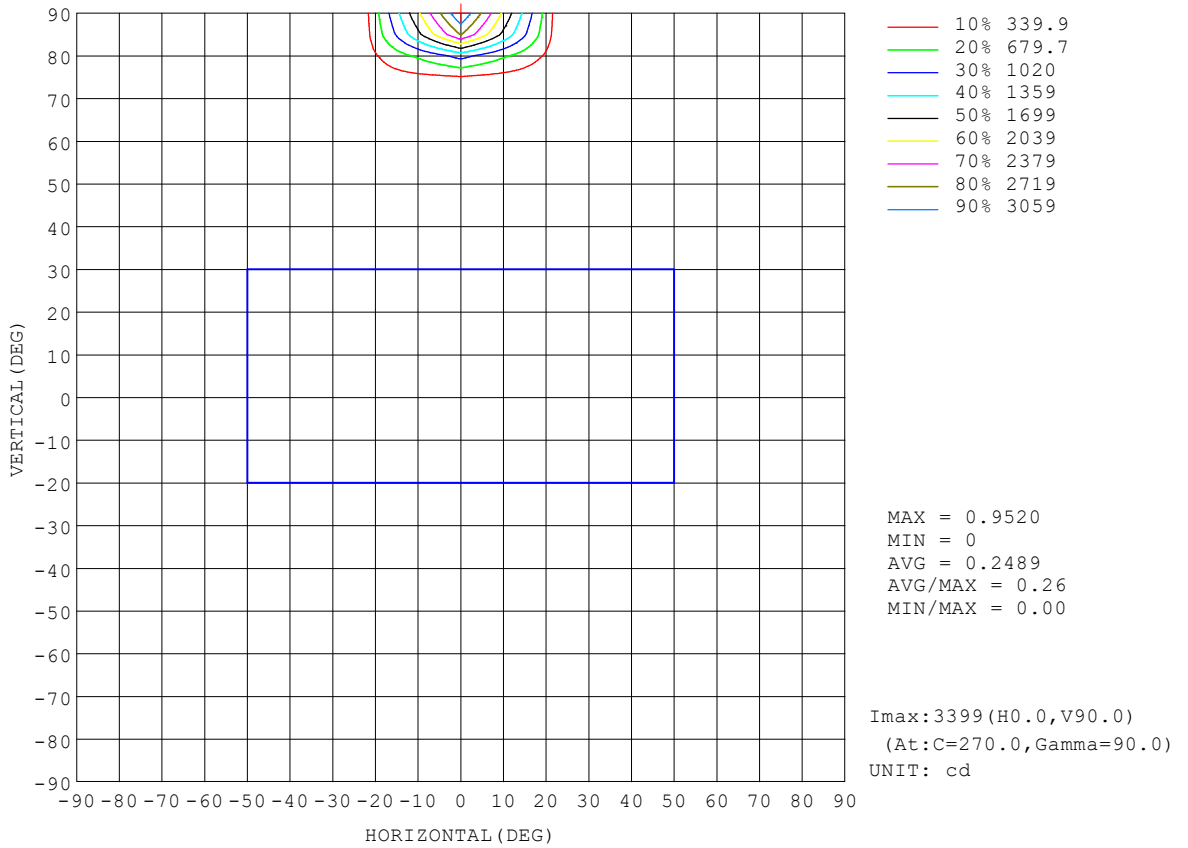
REFLECTANCE										
Ceiling	0.8	0.8	0.8	0.7	0.7	0.7	0.5	0.5	0.5	0
Walls	0.7	0.5	0.3	0.7	0.5	0.3	0.7	0.5	0.3	0
Working plane	0.2	0.2	0.2	0.2	0.2	0.2	0.2	0.2	0.2	0
ROOM INDEX	UTILIZATION FACTORS (PERCENT) $k(RI) \times RCR = 5$									
k = 0.60	30	15	7	28	15	7	26	14	6	-0
0.80	36	19	9	34	19	9	31	17	8	-0
1.00	41	23	12	39	22	11	34	23	10	0
1.25	46	27	14	43	26	14	38	23	12	0
1.50	50	31	17	47	29	16	41	25	14	1
2.00	56	37	22	52	34	21	45	30	18	2
2.50	61	42	27	57	39	25	48	34	22	4
3.00	65	46	32	60	43	29	51	37	25	6
4.00	71	54	39	65	50	36	55	42	31	10
5.00	75	59	45	69	55	42	58	46	36	13
ROOM INDEX	UF(total)									Direct
According to DIN EN 13032-2 2004			Suspended				SHRNOM = 1.25			

C Range: 0 - 360DEG
 C Interval: 22.5DEG
 Test Speed: HIGH
 Temperature:25.3°C
 Operators:DAMIN
 Test Date:2023-11-17

γ Range: 0 - 180DEG
 γ Interval: 5.0DEG
 Test System:EVERFINE GO-2000B_V1 SYSTEM V2.00.473
 Humidity:65.0%
 Test Distance:9.401m [K=1.0000]
 Remarks:

ISOCANDELA DIAGRAM

Test:U:220.34V I:0.0471A P:5.1812W PF:0.4988 Freq:50.00Hz Lamp Flux:469.47lx1 lm		
NAME: 壁灯	TYPE: W系列	WEIGHT:
SPEC.:	DIM.:	SERIAL No.:
MFR.: EVERFINE	SUR.:	Shielding Angle:

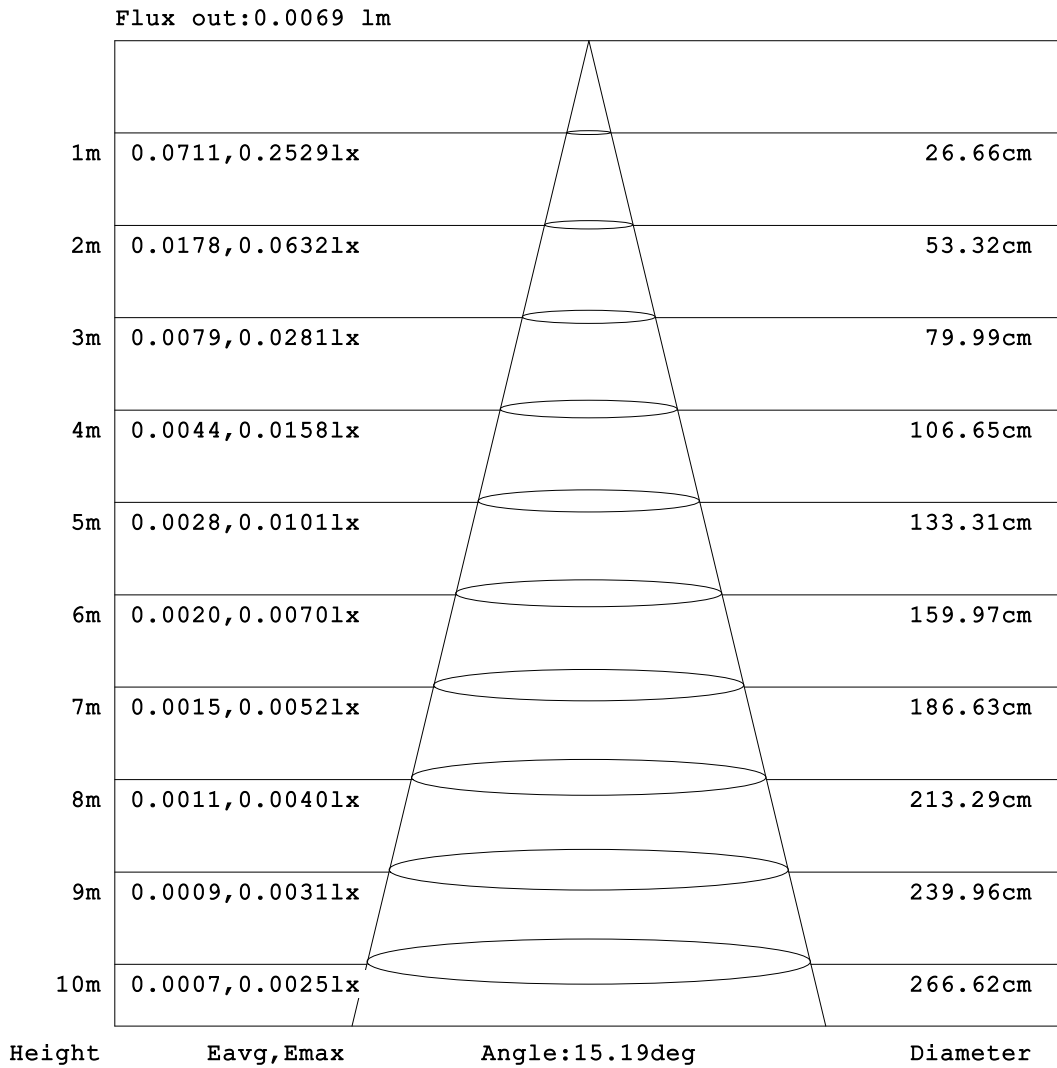


C Range: 0 - 360DEG
 C Interval: 22.5DEG
 Test Speed: HIGH
 Temperature: 25.3°C
 Operators: DAMIN
 Test Date: 2023-11-17

γ Range: 0 - 180DEG
 γ Interval: 5.0DEG
 Test System: EVERFINE GO-2000B_V1 SYSTEM V2.00.473
 Humidity: 65.0%
 Test Distance: 9.401m [K=1.0000]
 Remarks:

AAI Figure

Test:U:220.34V I:0.0471A P:5.1812W PF:0.4988 Freq:50.00Hz Lamp Flux:469.47lx1 lm		
NAME: 壁灯	TYPE: W系列	WEIGHT:
SPEC.:	DIM.:	SERIAL No.:
MFR.: EVERFINE	SUR.:	Shielding Angle:



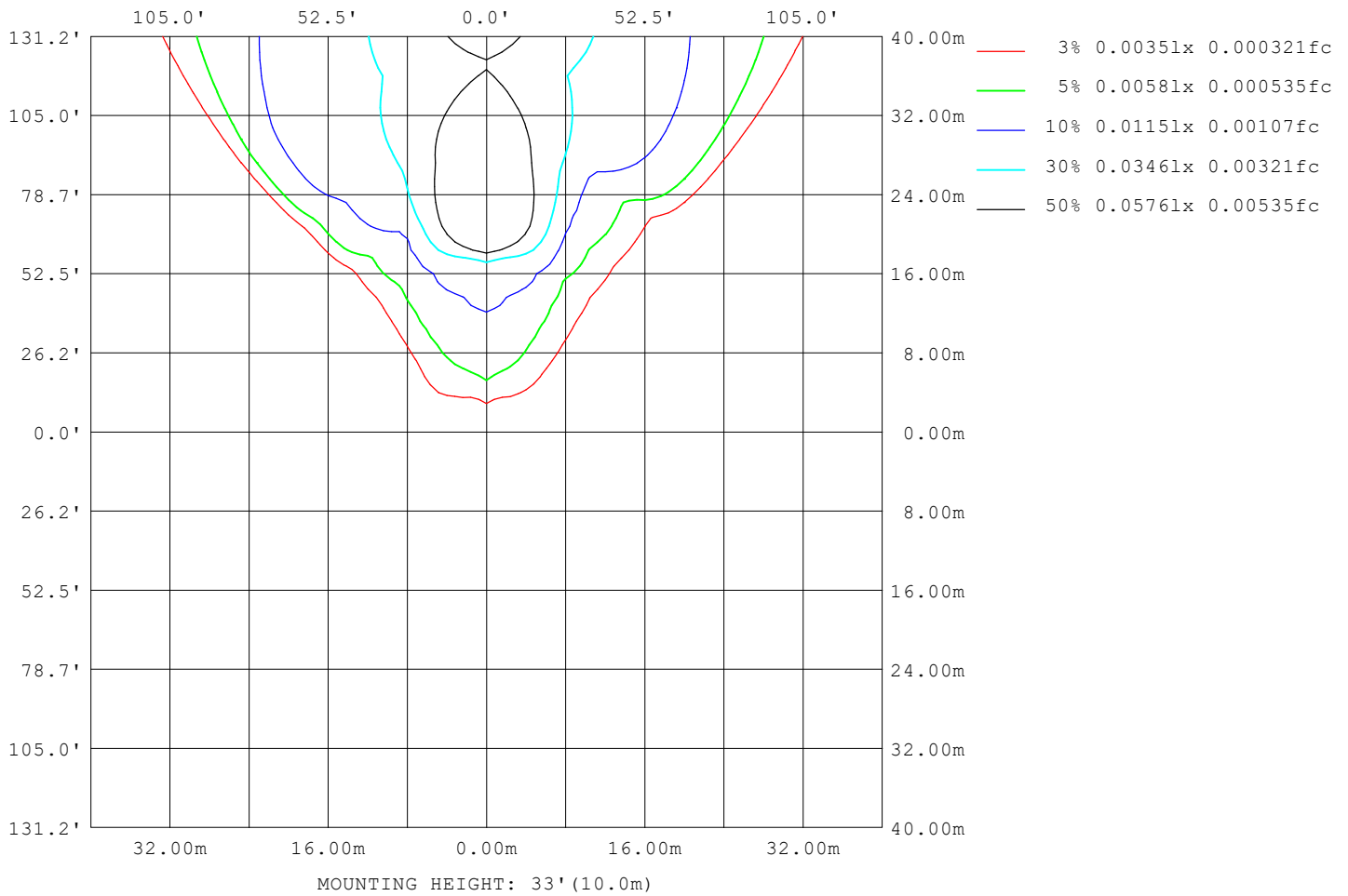
Note:The Curves indicate the illuminated area and the average illumination when the luminaire is at different distance.

C Range: 0 - 360DEG
C Interval: 22.5DEG
Test Speed: HIGH
Temperature:25.3°C
Operators:DAMIN
Test Date:2023-11-17

γ Range: 0 - 180DEG
γ Interval: 5.0DEG
Test System:EVERFINE GO-2000B_V1 SYSTEM V2.00.473
Humidity:65.0%
Test Distance:9.401m [K=1.0000]
Remarks:

ISOLUX DIAGRAM

Test:U:220.34V I:0.0471A P:5.1812W PF:0.4988 Freq:50.00Hz Lamp Flux:469.471x1 lm		
NAME: 壁灯	TYPE: W系列	WEIGHT:
SPEC.:	DIM.:	SERIAL No.:
MFR.: EVERFINE	SUR.:	Shielding Angle:



C Range: 0 - 360DEG
 C Interval: 22.5DEG
 Test Speed: HIGH
 Temperature:25.3°C
 Operators:DAMIN
 Test Date:2023-11-17

γ Range: 0 - 180DEG
 γ Interval: 5.0DEG
 Test System:EVERFINE GO-2000B_V1 SYSTEM V2.00.473
 Humidity:65.0%
 Test Distance:9.401m [K=1.0000]
 Remarks:

LED Avg.L Report

Test:U:220.34V I:0.0471A P:5.1812W PF:0.4988 Freq:50.00Hz Lamp Flux:469.471x1 lm		
NAME: 壁灯	TYPE: W系列	WEIGHT:
SPEC.:	DIM.:	SERIAL No.:
MFR.: EVERFINE	SUR.:	Shielding Angle:

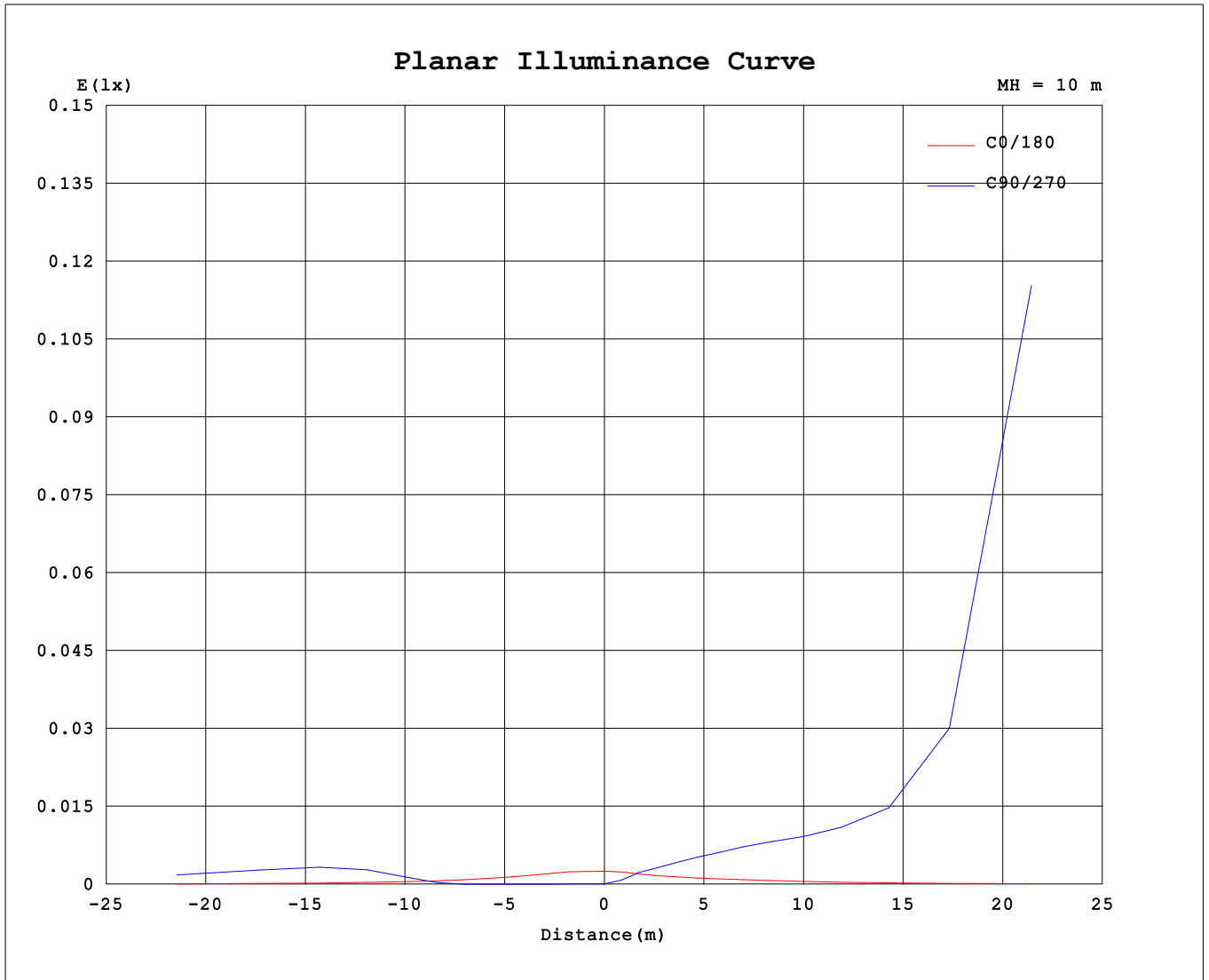
AvgL	cd/m2
L_0~180 (65) av	1
L_0~180 (75) av	1
L_0~180 (85) av	4
L_90~270 (65) av	15122
L_90~270 (75) av	51369
L_90~270 (85) av	1299060
L_45 (65) av	54
L_45 (75) av	116
L_45 (85) av	391

Standard: GB/T 29293-2012

C Range: 0 - 360DEG
 C Interval: 22.5DEG
 Test Speed: HIGH
 Temperature:25.3℃
 Operators:DAMIN
 Test Date:2023-11-17

γ Range: 0 - 180DEG
 γ Interval: 5.0DEG
 Test System:EVERFINE GO-2000B_V1 SYSTEM V2.00.473
 Humidity:65.0%
 Test Distance:9.401m [K=1.0000]
 Remarks:

Planar Illuminance Curve



C Range: 0 - 360DEG
 C Interval: 22.5DEG
 Test Speed: HIGH
 Temperature: 25.3°C
 Operators: DAMIN
 Test Date: 2023-11-17

γ Range: 0 - 180DEG
 γ Interval: 5.0DEG
 Test System: EVERFINE GO-2000B_V1 SYSTEM V2.00.473
 Humidity: 65.0%
 Test Distance: 9.401m [K=1.0000]
 Remarks:

LUMINOUS DISTRIBUTION INTENSITY DATA

Test:U:220.34V I:0.0471A P:5.1812W PF:0.4988 Freq:50.00Hz Lamp Flux:469.471x1 lm		
NAME: 壁灯	TYPE: W系列	WEIGHT:
SPEC.:	DIM.:	SERIAL No.:
MFR.: EVERFINE	SUR.:	Shielding Angle:

Table--1

UNIT: X10cd

C (DEG) \ γ (DEG)	0	22.5	45	67.5	90	112.5	135	157.5	180	202.5	225	247.5	270	292.5	315	337.5			
0	0.01	0.01	0.01	0.00	0.01	0.00	0.01	0.00	0.01	0.01	0.01	0.00	0.01	0.00	0.01	0.00			
5	0.01	0.00	0.01	0.00	0.00	0.00	0.01	0.00	0.00	0.01	0.01	0.00	0.07	0.00	0.01	0.00			
10	0.01	0.00	0.01	0.00	0.00	0.00	0.01	0.00	0.00	0.01	0.03	0.02	0.20	0.02	0.05	0.00			
15	0.00	0.00	0.01	0.00	0.00	0.00	0.00	0.00	0.00	0.01	0.06	0.03	0.29	0.03	0.07	0.00			
20	0.00	0.00	0.00	0.00	0.00	0.00	0.00	0.00	0.00	0.01	0.07	0.04	0.42	0.04	0.09	0.01			
25	0.00	0.00	0.00	0.00	0.00	0.00	0.00	0.00	0.00	0.02	0.09	0.06	0.58	0.06	0.11	0.01			
30	0.00	0.00	0.00	0.00	0.00	0.00	0.00	0.00	0.00	0.02	0.12	0.08	0.78	0.07	0.14	0.02			
35	0.00	0.00	0.00	0.00	0.00	0.00	0.00	0.00	0.00	0.02	0.14	0.10	1.09	0.10	0.17	0.02			
40	0.00	0.00	0.00	0.01	0.06	0.00	0.00	0.00	0.00	0.03	0.17	0.14	1.51	0.13	0.20	0.02			
45	0.00	0.00	0.00	0.03	0.34	0.01	0.00	0.00	0.00	0.03	0.20	0.19	2.15	0.18	0.24	0.02			
50	0.00	0.00	0.00	0.08	0.87	0.03	0.00	0.00	0.00	0.03	0.24	0.27	3.42	0.24	0.29	0.03			
55	0.00	0.00	0.02	0.14	1.46	0.06	0.00	0.00	0.00	0.04	0.28	0.40	6.44	0.35	0.34	0.03			
60	0.00	0.00	0.03	0.19	1.81	0.11	0.01	0.00	0.00	0.04	0.32	0.62	19.82	0.53	0.41	0.04			
65	0.00	0.00	0.04	0.22	2.00	0.16	0.02	0.00	0.00	0.05	0.36	1.29	126	1.01	0.49	0.04			
70	0.00	0.00	0.05	0.24	2.16	0.21	0.04	0.00	0.00	0.05	0.41	4.60	192	2.11	0.57	0.04			
75	0.00	0.00	0.06	0.26	2.29	0.23	0.05	0.00	0.00	0.05	0.45	15.1	264	10.2	0.64	0.04			
80	0.00	0.00	0.07	0.26	2.33	0.25	0.07	0.00	0.00	0.05	0.48	20.2	947	18.3	0.71	0.05			
85	0.00	0.00	0.07	0.26	2.25	0.25	0.08	0.00	0.00	0.05	0.49	21.3	2262	20.2	0.72	0.05			
90	0.00	0.00	0.08	0.24	2.11	0.24	0.08	0.00	0.00	0.05	0.49	21.6	2798	20.3	0.70	0.05			
95	0.00	0.00	0.08	0.23	1.86	0.24	0.08	0.00	0.00	0.05	0.47	21.2	1904	19.8	0.66	0.05			
100	0.00	0.00	0.08	0.23	1.75	0.24	0.10	0.00	0.00	0.03	0.34	19.3	585	18.0	0.51	0.02			
105	0.00	0.00	0.08	0.23	1.81	0.25	0.10	0.00	0.00	0.02	0.24	1.24	55.92	1.06	0.30	0.01			
110	0.00	0.00	0.08	0.19	1.66	0.24	0.10	0.00	0.00	0.02	0.12	5.11	13.52	1.85	0.18	0.01			
115	0.00	0.00	0.06	0.13	1.54	0.21	0.10	0.00	0.00	0.02	0.09	0.18	5.18	0.17	0.15	0.01			
120	0.00	0.00	0.05	0.09	1.33	0.17	0.08	0.00	0.00	0.02	0.14	0.16	20.46	0.15	0.23	0.01			
125	0.00	0.00	0.02	0.11	1.37	0.13	0.06	0.00	0.00	0.02	0.18	0.11	2.27	0.14	0.27	0.01			
130	0.00	0.00	0.02	0.07	1.01	0.06	0.03	0.00	0.00	0.02	0.22	0.11	1.19	0.14	0.27	0.01			
135	0.00	0.00	0.02	0.04	0.90	0.03	0.03	0.00	0.00	0.02	0.20	0.13	1.17	0.13	0.22	0.01			
140	0.00	0.00	0.01	0.02	0.32	0.02	0.01	0.00	0.00	0.01	0.17	0.13	1.16	0.12	0.18	0.00			
145	0.00	0.00	0.01	0.01	0.16	0.00	0.01	0.00	0.00	0.01	0.12	0.11	0.93	0.10	0.06	0.00			
150	0.00	0.00	0.00	0.00	0.06	0.00	0.00	0.00	0.00	0.01	0.04	0.05	0.73	0.04	0.04	0.00			
155	0.00	0.00	0.00	0.00	0.00	0.00	0.00	0.00	0.00	0.01	0.05	0.00	0.28	0.00	0.03	0.00			
160	0.00	0.00	0.00	0.00	0.00	0.00	0.00	0.00	0.00	0.01	0.00	0.03	0.39	0.03	0.00	0.00			
165	0.00	0.00	0.00	0.00	0.00	0.00	0.00	0.00	0.00	0.01	0.00	0.00	0.00	0.00	0.00	0.00			
170	0.00	0.00	0.00	0.00	0.00	0.00	0.00	0.00	0.00	0.01	0.00	0.00	0.00	0.00	0.00	0.00			
175	0.00	0.01	0.00	0.00	0.00	0.00	0.00	0.00	0.00	0.01	0.00	0.00	0.00	0.00	0.00	0.00			
180	0.00	0.01	0.00	0.00	0.00	0.00	0.00	0.00	0.00	0.01	0.00	0.00	0.00	0.00	0.00	0.00			

C Range: 0 - 360DEG
 C Interval: 22.5DEG
 Test Speed: HIGH
 Temperature:25.3℃
 Operators:DAMIN
 Test Date:2023-11-17

γ Range: 0 - 180DEG
 γ Interval: 5.0DEG
 Test System:EVERFINE GO-2000B_V1 SYSTEM V2.00.473
 Humidity:65.0%
 Test Distance:9.401m [K=1.0000]
 Remarks: