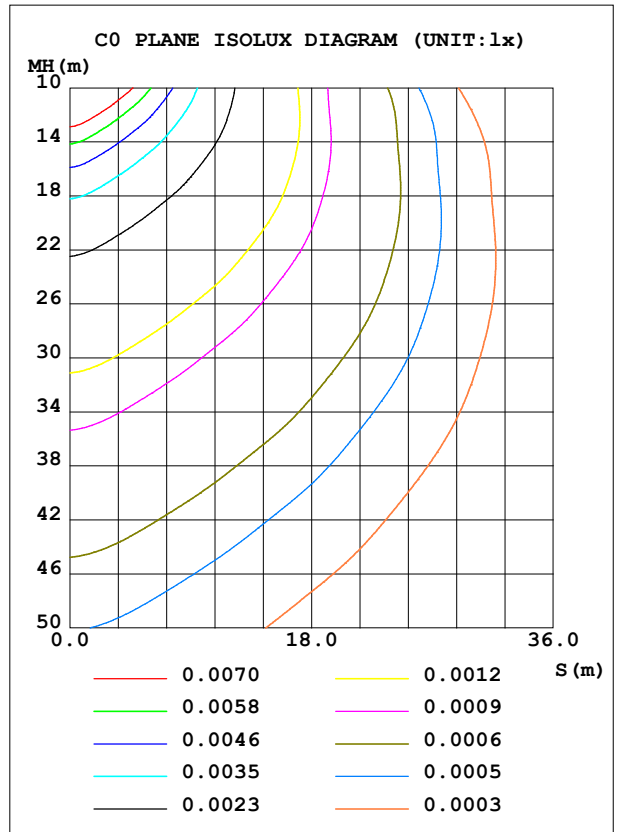
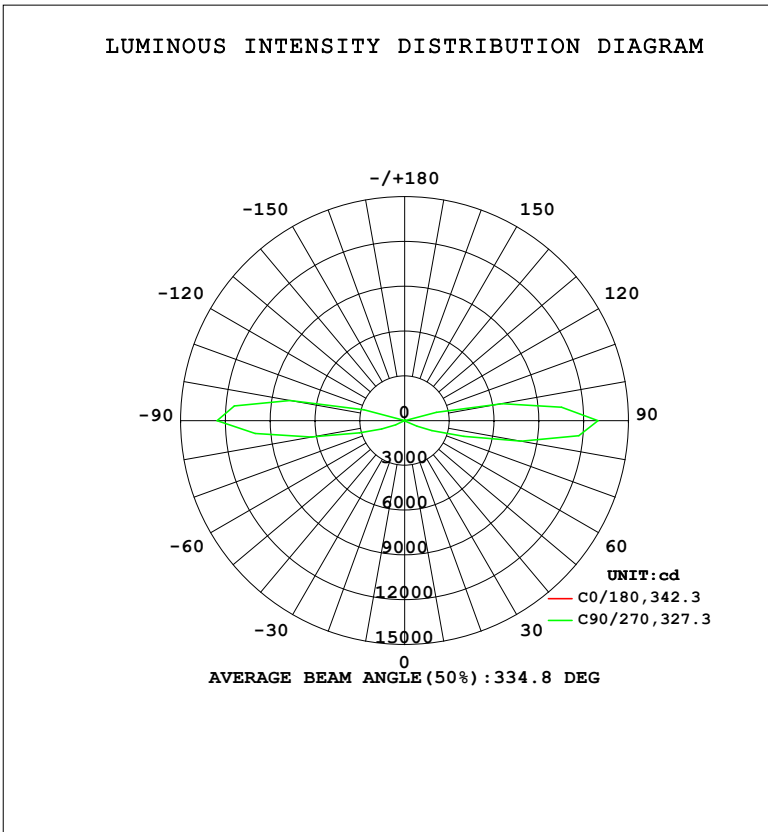


LUMINAIRE PHOTOMETRIC TEST REPORT

Test:U:220.35V I:0.0949A P:20.024W PF:0.9575 Freq:50.00Hz Lamp Flux:1750.62x1 lm		
NAME:	TYPE:	WEIGHT:
SPEC.:	DIM.:	SERIAL No.:
MFR.: EVERFINE	SUR.:	Shielding Angle:

DATA OF LAMP		PHOTOMETRIC DATA				Eff: 87.43 lm/W
MODEL	MB16-006	I _{max} (cd)	12948	S/MH (C0/180)	1.27	
NOMINAL POWER (W)	2*10	LOR (%)	100.0	S/MH (C90/270)	73.60	
RATED VOLTAGE (V)	220	TOTAL FLUX (lm)	1750.6	η UP, DN (C0-180)	22.8, 28.3	
NOMINAL FLUX (lm)	1750.62	CIE CLASS	DIFFUSE	η UP, DN (C180-360)	24.5, 24.4	
LAMPS INSIDE	1	η up (%)	47.3	CIBSE SHR NOM	0.75	
TEST VOLTAGE (V)	219.5	η down (%)	52.7	CIBSE SHR MAX	0.75	



C Range: 0 - 360DEG
 C Interval: 22.5DEG
 Test Speed: HIGH
 Temperature: 25.3°C
 Operators: DAMIN
 Test Date: 2024-05-29

γ Range: 0 - 180DEG
 γ Interval: 5.0DEG
 Test System: EVERFINE GO-2000B_V1 SYSTEM V2.00.473
 Humidity: 65.0%
 Test Distance: 9.401m [K=1.0000]
 Remarks:

ZONAL FLUX DIAGRAM

ZONAL FLUX DIAGRAM:

γ	C0	C45	C90	C135	C180	C225	C270	C315	γ	Φ zone	Φ total	%lum,lamp
10	0.0390	0.0549	0.0847	0.0550	0.0395	0.0655	0.0966	0.0695	0- 10	0.0431	0.0431	0.00,0.00
20	0.0359	0.0818	0.1762	0.1022	0.0361	0.1112	0.1798	0.1128	10- 20	0.1592	0.2024	0.01,0.01
30	0.0345	0.1192	0.3705	0.1546	0.0359	0.1638	0.3579	0.1666	20- 30	0.3576	0.5599	0.03,0.03
40	0.0343	0.1765	1.134	0.2254	0.0359	0.2047	1.058	0.2506	30- 40	0.7967	1.357	0.08,0.08
50	0.0341	0.3121	3.781	0.3617	0.0368	0.2902	3.385	0.4382	40- 50	2.230	3.586	0.20,0.20
60	0.0343	0.5062	9.155	0.6303	0.0381	0.4306	7.794	0.7360	50- 60	5.768	9.355	0.53,0.53
70	0.0372	0.7693	195.7	1.029	0.0395	0.6260	165.4	1.186	60- 70	46.35	55.70	3.18,3.18
80	0.0401	1.006	795.4	1.363	0.0397	0.8282	638.8	1.597	70- 80	239.7	295.4	16.9,16.9
90	0.0431	1.053	1295	1.463	0.0397	0.8853	1256	1.744	80- 90	627.3	922.6	52.7,52.7
100	0.0431	0.9195	665.2	1.305	0.0372	0.8033	779.5	1.581	90-100	629.5	1552	88.7,88.7
110	0.0428	0.4226	10.04	0.5607	0.0350	0.3634	14.54	0.7141	100-110	187.3	1739	99.4,99.4
120	0.0399	0.2572	1.868	0.3368	0.0323	0.2749	2.098	0.4235	110-120	6.207	1746	99.7,99.7
130	0.0379	0.2794	1.735	0.3344	0.0298	0.2909	1.887	0.3277	120-130	2.472	1748	99.9,99.9
140	0.0359	0.1756	0.8666	0.2204	0.0285	0.1857	0.8955	0.2082	130-140	1.610	1750	99.9,99.9
150	0.0343	0.1100	0.2981	0.1469	0.0269	0.0470	0.3223	0.0239	140-150	0.6379	1750	100,100
160	0.0327	0.0047	0.1132	0.0172	0.0249	0.0117	0.0745	0	150-160	0.2215	1751	100,100
170	0.0265	0	0	0.0066	0.0195	0.0012	0.0001	0	160-170	0.0614	1751	100,100
180	0.0186	0	0	0	0.0188	0	0	0	170-180	0.0158	1751	100,100
DEG	LUMINOUS INTENSITY:X10cd									UNIT:lm		

Conical surface Flux(90deg): 2.1803 lm

%lum = 0.1%

%lamp = 0.1%

Conical surface Flux(130deg): 21.744 lm

%lum = 1.2%

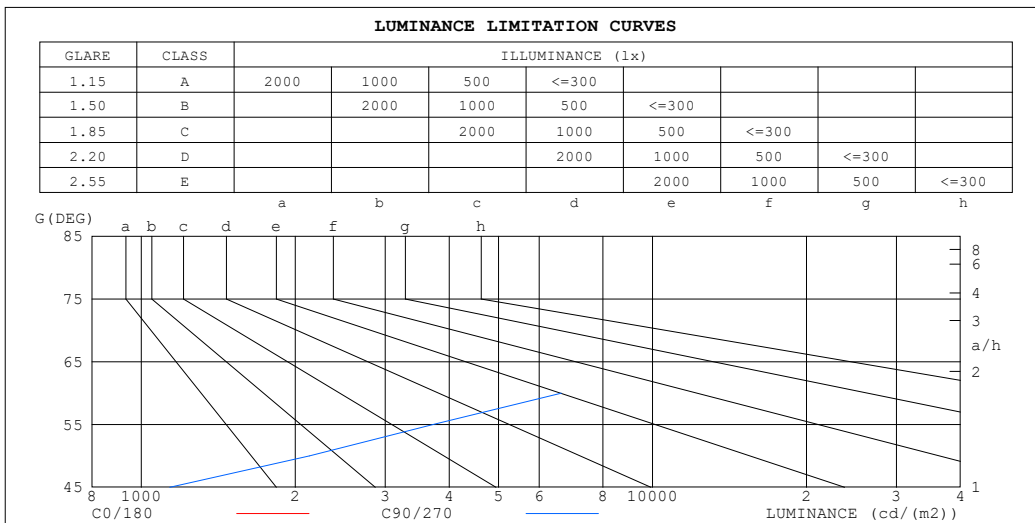
%lamp = 1.2%

C Range: 0 - 360DEG
 C Interval: 22.5DEG
 Test Speed: HIGH
 Temperature:25.3°C
 Operators:DAMIN
 Test Date:2024-05-29

γ Range: 0 - 180DEG
 γ Interval: 5.0DEG
 Test System:EVERFINE GO-2000B_V1 SYSTEM V2.00.473
 Humidity:65.0%
 Test Distance:9.401m [K=1.0000]
 Remarks:

LUMINANCE LIMITATION CURVES

Test:U:220.35V I:0.0949A P:20.024W PF:0.9575 Freq:50.00Hz Lamp Flux:1750.62x1 lm		
NAME:	TYPE:	WEIGHT:
SPEC.:	DIM.:	SERIAL No.:
MFR.: EVERFINE	SUR.:	Shielding Angle:



LUMINANCE cd/(m2)		
G (DEG)	C0/180	C90/270
85	1285	4867829
80	621	1658334
75	400	577117
70	292	207211
65	229	77276
60	184	6629
55	160	3720
50	142	2130
45	129	1137

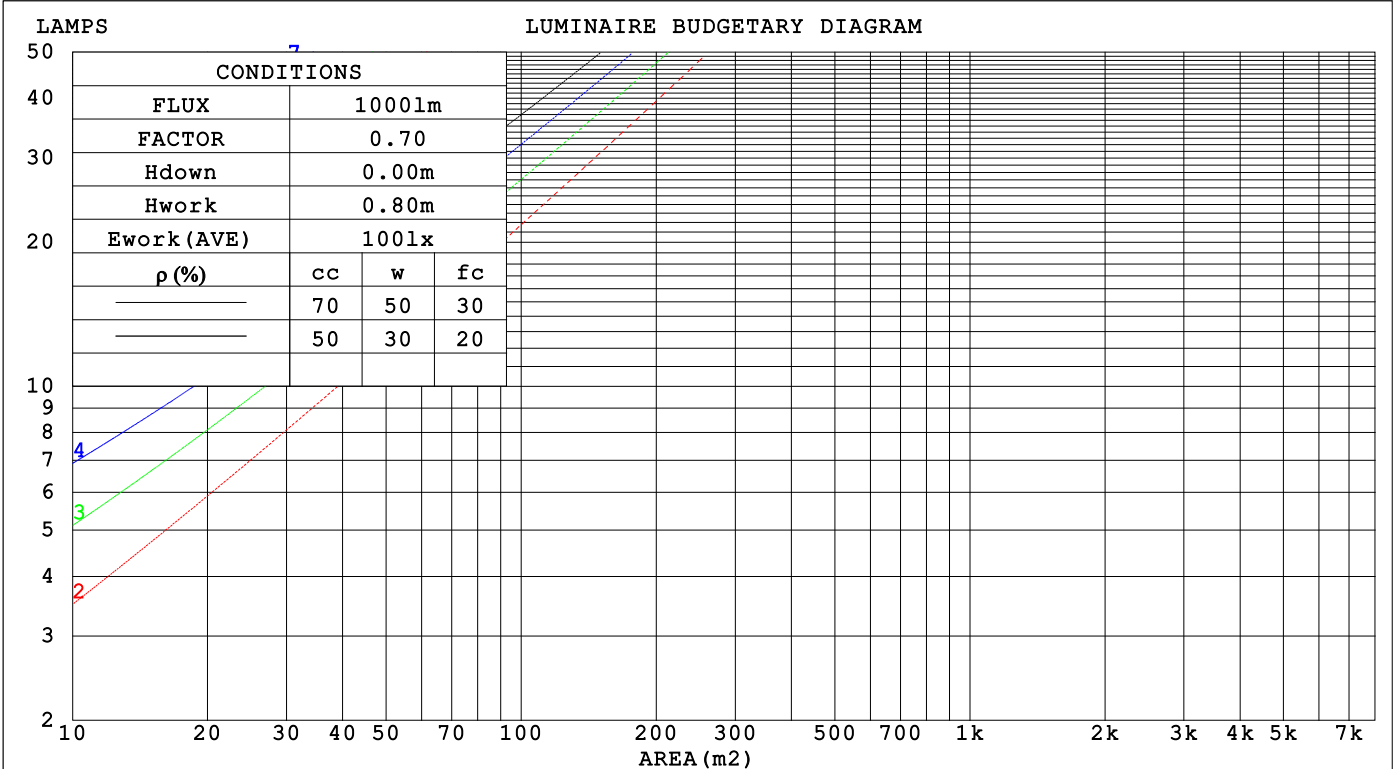
C Range: 0 - 360DEG
 C Interval: 22.5DEG
 Test Speed: HIGH
 Temperature:25.3°C
 Operators:DAMIN
 Test Date:2024-05-29

γ Range: 0 - 180DEG
 γ Interval: 5.0DEG
 Test System:EVERFINE GO-2000B_V1 SYSTEM V2.00.473
 Humidity:65.0%
 Test Distance:9.401m [K=1.0000]
 Remarks:

CU AND LUMINAIRE BUDGETARY ESTIMATE DIAGRAM

Test:U:220.35V I:0.0949A P:20.024W PF:0.9575 Freq:50.00Hz Lamp Flux:1750.62x1 lm		
NAME:	TYPE:	WEIGHT:
SPEC.:	DIM.:	SERIAL No.:
MFR.: EVERFINE	SUR.:	Shielding Angle:

ρ_{cc}	80%			70%			50%			30%			10%			0
ρ_w	50%	30%	10%	50%	30%	10%	50%	30%	10%	50%	30%	10%	50%	30%	10%	0
ρ_{fc}	20%			20%			20%			20%			20%			0
RCR	RCR:Room Cavity Ratio						Coefficients of Utilization(CU)									
0.0	1.08	1.08	1.08	.00	.00	.00	.85	.85	.85	.71	.71	.71	.59	.59	.59	.53
1.0	.73	.63	.55	.66	.57	.49	.52	.45	.39	.40	.34	.29	.29	.24	.20	.14
2.0	.59	.48	.38	.53	.43	.34	.41	.33	.26	.31	.24	.18	.21	.16	.11	.06
3.0	.50	.39	.30	.45	.35	.26	.35	.27	.20	.26	.19	.13	.17	.12	.07	.02
4.0	.44	.33	.24	.39	.29	.21	.31	.22	.16	.23	.16	.10	.15	.10	.05	.01
5.0	.39	.28	.20	.35	.25	.18	.27	.19	.13	.20	.14	.09	.14	.08	.04	.01
6.0	.35	.24	.17	.31	.22	.15	.25	.17	.11	.18	.12	.07	.12	.08	.04	.00
7.0	.31	.22	.15	.28	.19	.13	.22	.15	.10	.17	.11	.06	.12	.07	.03	.00
8.0	.28	.19	.13	.26	.17	.11	.20	.13	.08	.15	.10	.06	.11	.06	.03	.00
9.0	.26	.17	.11	.23	.15	.10	.19	.12	.07	.14	.09	.05	.10	.06	.03	.00
10.0	.24	.15	.10	.22	.14	.09	.17	.11	.07	.13	.08	.04	.10	.05	.02	.00



C Range: 0 - 360DEG
 C Interval: 22.5DEG
 Test Speed: HIGH
 Temperature:25.3°C
 Operators:DAMIN
 Test Date:2024-05-29

γ Range: 0 - 180DEG
 γ Interval: 5.0DEG
 Test System:EVERFINE GO-2000B_V1 SYSTEM V2.00.473
 Humidity:65.0%
 Test Distance:9.401m [K=1.0000]
 Remarks:

WEC AND CCEC

Test:U:220.35V I:0.0949A P:20.024W PF:0.9575 Freq:50.00Hz								
Lamp Flux:1750.62x1 lm								
NAME:			TYPE:			WEIGHT:		
SPEC.:			DIM.:			SERIAL No.:		
MFR.: EVERFINE			SUR.:			Shielding Angle:		

ρ_{CC}	80%			70%			50%			30%			10%			0
ρ_w	50%	30%	10%	50%	30%	10%	50%	30%	10%	50%	30%	10%	50%	30%	10%	0
ρ_{fc}	20%			20%			20%			20%			20%			0
RCR	RCR:Room Cavity Ratio						Wall Exitance Coefficients (WEC)									
0.0																
1.0	.685	.390	.123	.663	.378	.120	.621	.356	.114	.582	.336	.108	.547	.317	.102	
2.0	.481	.264	.081	.461	.254	.078	.422	.235	.073	.387	.217	.068	.354	.200	.063	
3.0	.381	.203	.061	.363	.194	.058	.328	.178	.054	.296	.162	.050	.266	.147	.046	
4.0	.320	.166	.049	.303	.159	.047	.271	.144	.043	.242	.130	.039	.214	.116	.035	
5.0	.277	.141	.041	.262	.134	.039	.233	.121	.036	.206	.109	.032	.180	.096	.029	
6.0	.246	.123	.035	.232	.117	.034	.205	.105	.031	.180	.094	.027	.157	.082	.024	
7.0	.221	.109	.031	.208	.104	.030	.184	.093	.027	.161	.082	.024	.139	.072	.021	
8.0	.202	.099	.028	.190	.093	.026	.167	.083	.024	.145	.074	.021	.125	.064	.019	
9.0	.185	.090	.025	.174	.085	.024	.153	.076	.021	.133	.067	.019	.114	.058	.017	
10.0	.171	.082	.023	.161	.078	.022	.141	.069	.019	.123	.061	.017	.105	.053	.015	

ρ_{CC}	80%			70%			50%			30%			10%			0
ρ_w	50%	30%	10%	50%	30%	10%	50%	30%	10%	50%	30%	10%	50%	30%	10%	0
ρ_{fc}	20%			20%			20%			20%			20%			0
RCR	RCR:Room Cavity Ratio						Ceiling Cavity Exitance Coefficients (CCEC)									
0.0	.551	.551	.551	.471	.471	.471	.321	.321	.321	.185	.185	.185	.059	.059	.059	
1.0	.570	.516	.468	.487	.443	.403	.333	.305	.279	.192	.176	.162	.061	.057	.052	
2.0	.563	.497	.441	.482	.428	.381	.331	.296	.266	.191	.172	.156	.061	.056	.051	
3.0	.554	.483	.426	.475	.416	.370	.326	.289	.259	.188	.169	.153	.060	.055	.050	
4.0	.544	.472	.417	.466	.408	.362	.321	.284	.255	.186	.166	.151	.060	.054	.050	
5.0	.534	.463	.411	.459	.401	.357	.316	.280	.252	.183	.164	.150	.059	.054	.049	
6.0	.525	.456	.406	.451	.395	.354	.311	.276	.250	.181	.163	.149	.058	.053	.049	
7.0	.517	.450	.403	.444	.390	.351	.307	.273	.249	.178	.161	.148	.058	.053	.049	
8.0	.509	.444	.400	.438	.385	.349	.303	.271	.247	.176	.160	.147	.057	.052	.049	
9.0	.502	.440	.398	.432	.382	.347	.300	.268	.246	.175	.158	.147	.057	.052	.049	
10.0	.495	.436	.396	.427	.378	.346	.296	.266	.246	.173	.157	.147	.056	.052	.049	

C Range: 0 - 360DEG
 C Interval: 22.5DEG
 Test Speed: HIGH
 Temperature:25.3°C
 Operators:DAMIN
 Test Date:2024-05-29

γ Range: 0 - 180DEG
 γ Interval: 5.0DEG
 Test System:EVERFINE GO-2000B_V1 SYSTEM V2.00.473
 Humidity:65.0%
 Test Distance:9.401m [K=1.0000]
 Remarks:

UGR(Unified Glare Rating) Table

Test:U:220.35V I:0.0949A P:20.024W PF:0.9575 Freq:50.00Hz										
Lamp Flux:1750.62x1 lm										
NAME:			TYPE:				WEIGHT:			
SPEC.:			DIM.:				SERIAL No.:			
MFR.: EVERFINE			SUR.:				Shielding Angle:			
ceiling/cavity	0.7	0.7	0.5	0.5	0.3	0.7	0.7	0.5	0.5	0.3
walls	0.5	0.3	0.5	0.3	0.3	0.5	0.3	0.5	0.3	0.3
working plane	0.2	0.2	0.2	0.2	0.2	0.2	0.2	0.2	0.2	0.2
Room dimensions	Viewed crosswise					Viewed endwise				
x = 2H y = 2H	-15.4	-14.2	-14.6	-13.3	-12.1	9.3	10.6	10.2	11.5	12.7
3H	-12.8	-11.6	-11.9	-10.7	-9.5	24.1	25.3	25.0	26.2	27.4
4H	-11.0	-9.9	-10.1	-8.9	-7.7	33.9	35.1	34.8	36.0	37.2
6H	-8.8	-7.7	-7.9	-6.8	-5.5	42.2	43.3	43.1	44.2	45.5
8H	-7.6	-6.5	-6.7	-5.5	-4.3	45.9	47.0	46.9	48.0	49.2
12H	-6.1	-5.0	-5.2	-4.1	-2.8	49.0	50.1	49.9	51.0	52.3
4H 2H	-5.4	-4.2	-4.5	-3.3	-2.1	8.8	9.9	9.7	10.9	12.1
3H	-4.9	-3.9	-4.0	-2.9	-1.6	23.5	24.6	24.4	25.5	26.8
4H	-4.6	-3.6	-3.7	-2.7	-1.4	33.5	34.5	34.5	35.5	36.8
6H	-4.1	-3.2	-3.2	-2.2	-0.9	42.2	43.1	43.2	44.1	45.4
8H	-3.7	-2.8	-2.7	-1.8	-0.5	46.2	47.1	47.2	48.1	49.4
12H	-2.9	-2.1	-1.9	-1.1	0.3	49.7	50.5	50.7	51.5	52.9
8H 4H	11.7	12.5	12.6	13.5	14.9	33.2	34.1	34.2	35.1	36.4
6H	11.5	12.3	12.5	13.3	14.6	41.9	42.7	42.9	43.7	45.1
8H	11.4	12.1	12.4	13.2	14.5	46.0	46.8	47.0	47.8	49.2
12H	11.3	12.0	12.3	13.0	14.4	49.8	50.5	50.8	51.5	52.9
12H 4H	20.1	21.0	21.1	22.0	23.3	33.1	34.0	34.1	35.0	36.3
6H	20.1	20.9	21.1	21.9	23.2	41.8	42.6	42.8	43.6	45.0
8H	20.0	20.7	21.0	21.8	23.1	46.0	46.6	46.9	47.7	49.0
Variations with the observer position at spacings(CIE Pub.117):										
S = 1.0H	+ 0.8 / - 1.1					+ 0.4 / - 0.4				
1.5H	+ 2.1 / - 1.4					+ 1.0 / - 0.8				
2.0H	+ 3.9 / - 2.9					+ 1.5 / - 1.1				

CIE Pub.117, 1751 lm Total Lamp Luminous Flux Correct (8log(F/F0) = 1.9)
 Area: 0.01 m2

C Range: 0 - 360DEG
 C Interval: 22.5DEG
 Test Speed: HIGH
 Temperature:25.3°C
 Operators:DAMIN
 Test Date:2024-05-29

γ Range: 0 - 180DEG
 γ Interval: 5.0DEG
 Test System:EVERFINE GO-2000B_V1 SYSTEM V2.00.473
 Humidity:65.0%
 Test Distance:9.401m [K=1.0000]
 Remarks:

UTILIZATION FACTORS TABLE

Test:U:220.35V I:0.0949A P:20.024W PF:0.9575 Freq:50.00Hz Lamp Flux:1750.62x1 lm		
NAME:	TYPE:	WEIGHT:
SPEC.:	DIM.:	SERIAL No.:
MFR.: EVERFINE	SUR.:	Shielding Angle:

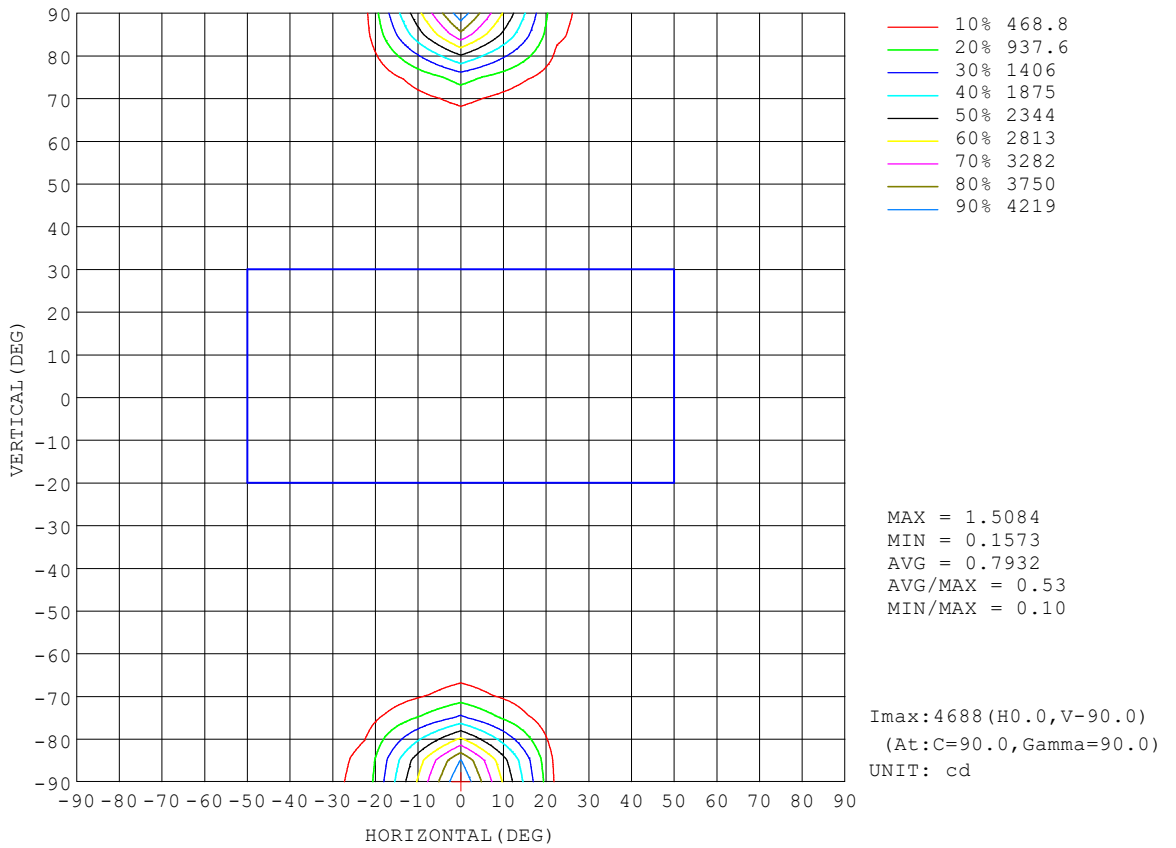
REFLECTANCE										
Ceiling	0.8	0.8	0.8	0.7	0.7	0.7	0.5	0.5	0.5	0
Walls	0.7	0.5	0.3	0.7	0.5	0.3	0.7	0.5	0.3	0
Working plane	0.2	0.2	0.2	0.2	0.2	0.2	0.2	0.2	0.2	0
ROOM INDEX	UTILIZATION FACTORS (PERCENT) $k(RI) \times RCR = 5$									
$k = 0.60$	29	15	7	28	15	7	26	14	7	0
0.80	36	19	10	34	19	9	30	17	8	0
1.00	41	23	12	38	22	11	34	22	10	0
1.25	46	27	15	43	26	14	38	23	13	1
1.50	50	31	18	47	29	17	41	26	15	1
2.00	57	38	24	53	35	22	45	31	19	3
2.50	62	44	29	57	40	27	49	34	23	5
3.00	66	48	34	61	45	31	51	38	27	7
4.00	72	55	42	66	51	39	55	43	33	11
5.00	76	61	48	70	56	44	59	47	37	14
ROOM INDEX	UF(total)									Direct
According to DIN EN 13032-2 2004			Suspended				SHRNOM = 1.25			

C Range: 0 - 360DEG
 C Interval: 22.5DEG
 Test Speed: HIGH
 Temperature:25.3°C
 Operators:DAMIN
 Test Date:2024-05-29

γ Range: 0 - 180DEG
 γ Interval: 5.0DEG
 Test System:EVERFINE GO-2000B_V1 SYSTEM V2.00.473
 Humidity:65.0%
 Test Distance:9.401m [K=1.0000]
 Remarks:

ISOCANDELA DIAGRAM

Test:U:220.35V I:0.0949A P:20.024W PF:0.9575 Freq:50.00Hz Lamp Flux:1750.62x1 lm		
NAME:	TYPE:	WEIGHT:
SPEC.:	DIM.:	SERIAL No.:
MFR.: EVERFINE	SUR.:	Shielding Angle:

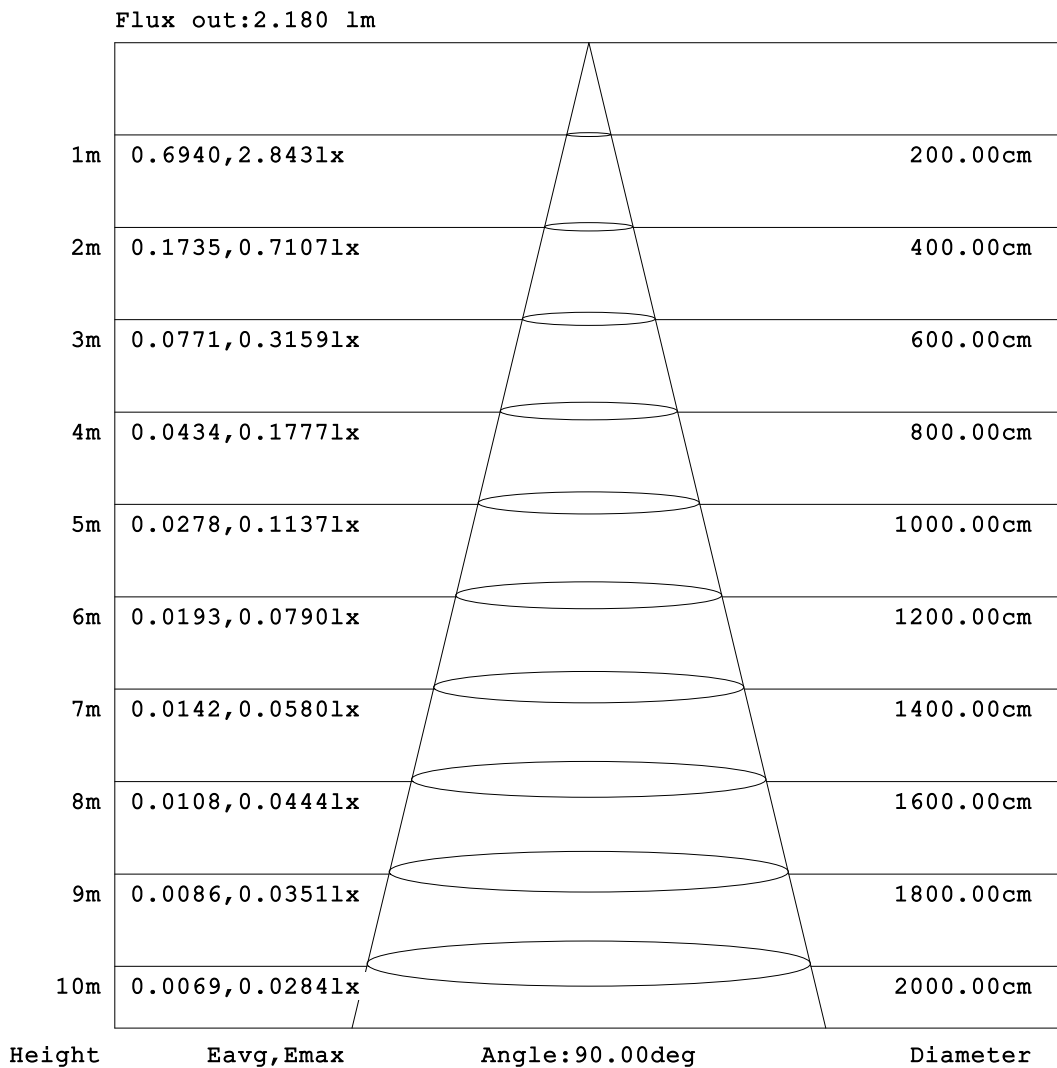


C Range: 0 - 360DEG
 C Interval: 22.5DEG
 Test Speed: HIGH
 Temperature: 25.3°C
 Operators: DAMIN
 Test Date: 2024-05-29

γ Range: 0 - 180DEG
 γ Interval: 5.0DEG
 Test System: EVERFINE GO-2000B_V1 SYSTEM V2.00.473
 Humidity: 65.0%
 Test Distance: 9.401m [K=1.0000]
 Remarks:

AAI Figure

Test:U:220.35V I:0.0949A P:20.024W PF:0.9575 Freq:50.00Hz Lamp Flux:1750.62x1 lm		
NAME:	TYPE:	WEIGHT:
SPEC.:	DIM.:	SERIAL No.:
MFR.: EVERFINE	SUR.:	Shielding Angle:



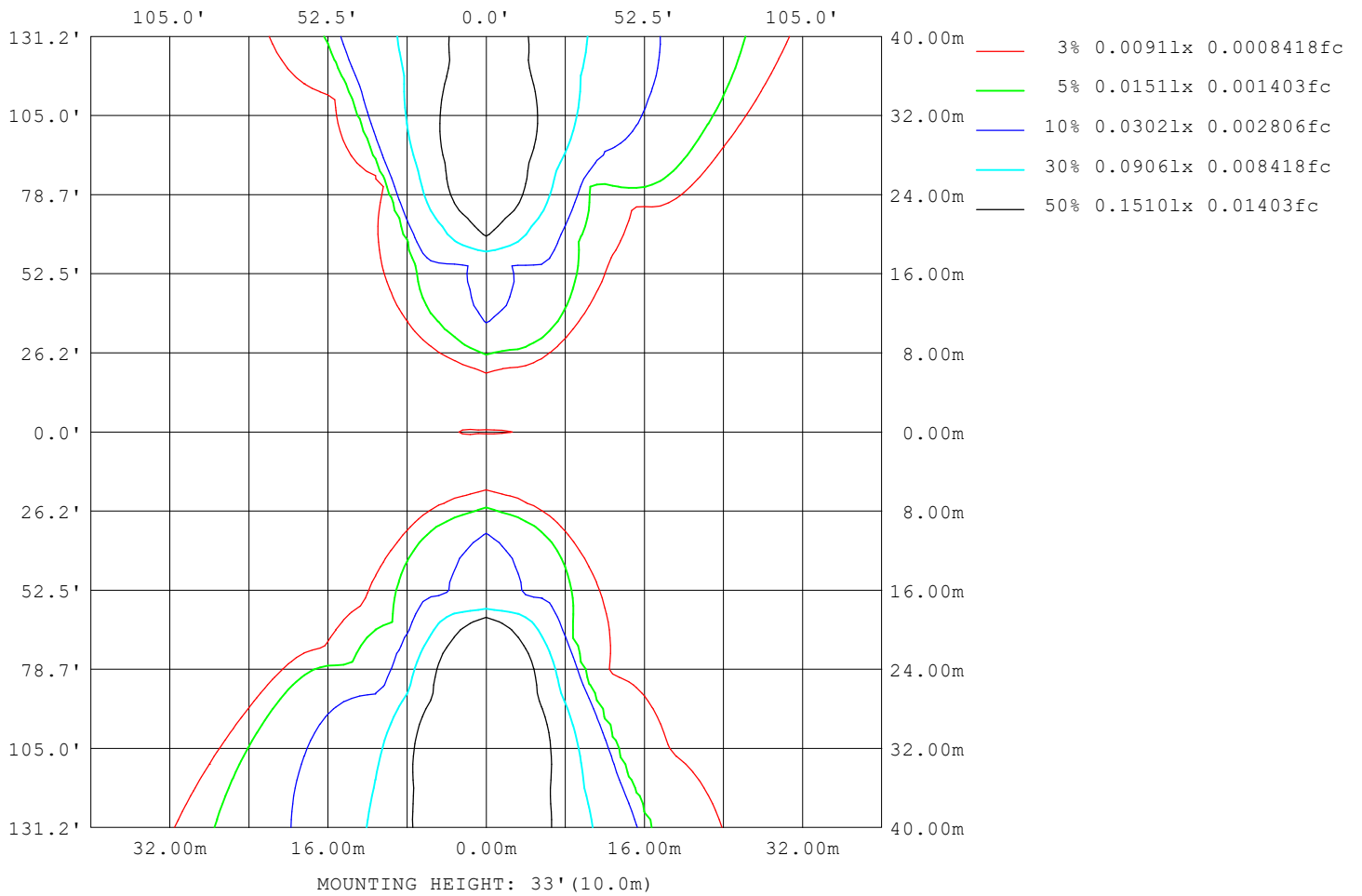
Note:The Curves indicate the illuminated area and the average illumination when the luminaire is at different distance.

C Range: 0 - 360DEG
C Interval: 22.5DEG
Test Speed: HIGH
Temperature:25.3°C
Operators:DAMIN
Test Date:2024-05-29

γ Range: 0 - 180DEG
γ Interval: 5.0DEG
Test System:EVERFINE GO-2000B_V1 SYSTEM V2.00.473
Humidity:65.0%
Test Distance:9.401m [K=1.0000]
Remarks:

ISOLUX DIAGRAM

Test:U:220.35V I:0.0949A P:20.024W PF:0.9575 Freq:50.00Hz Lamp Flux:1750.62x1 lm		
NAME:	TYPE:	WEIGHT:
SPEC.:	DIM.:	SERIAL No.:
MFR.: EVERFINE	SUR.:	Shielding Angle:



C Range: 0 - 360DEG
 C Interval: 22.5DEG
 Test Speed: HIGH
 Temperature:25.3°C
 Operators:DAMIN
 Test Date:2024-05-29

γ Range: 0 - 180DEG
 γ Interval: 5.0DEG
 Test System:EVERFINE GO-2000B_V1 SYSTEM V2.00.473
 Humidity:65.0%
 Test Distance:9.401m [K=1.0000]
 Remarks:

LED Avg.L Report

Test:U:220.35V I:0.0949A P:20.024W PF:0.9575 Freq:50.00Hz Lamp Flux:1750.62x1 lm		
NAME:	TYPE:	WEIGHT:
SPEC.:	DIM.:	SERIAL No.:
MFR.: EVERFINE	SUR.:	Shielding Angle:

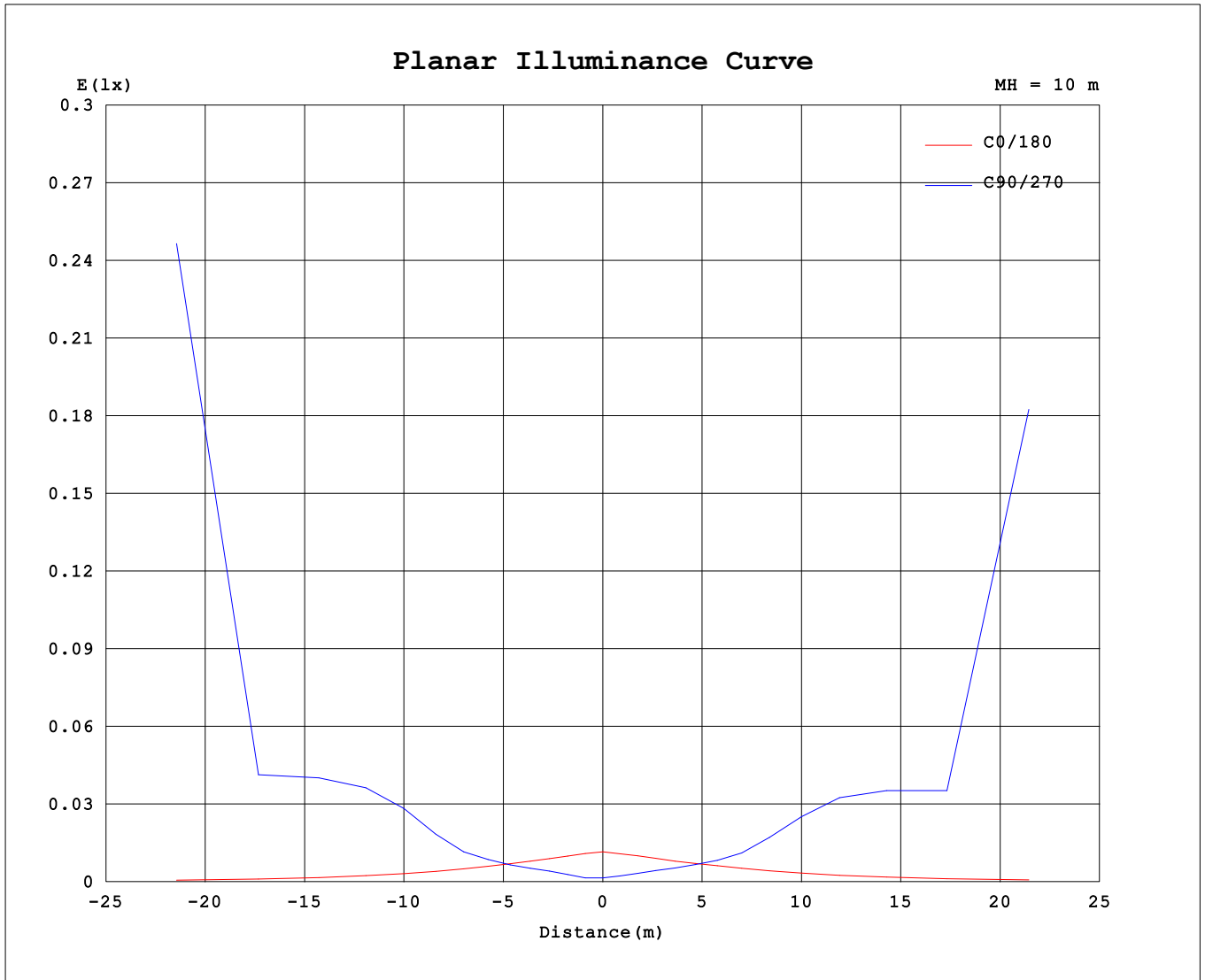
AvgL	cd/m2
L_0~180 (65) av	88
L_0~180 (75) av	151
L_0~180 (85) av	467
L_90~270 (65) av	185748
L_90~270 (75) av	1405159
L_90~270 (85) av	12486907
L_45 (65) av	1733
L_45 (75) av	4129
L_45 (85) av	14651

Standard: GB/T 29293-2012

C Range: 0 - 360DEG
 C Interval: 22.5DEG
 Test Speed: HIGH
 Temperature:25.3°C
 Operators:DAMIN
 Test Date:2024-05-29

γ Range: 0 - 180DEG
 γ Interval: 5.0DEG
 Test System:EVERFINE GO-2000B_V1 SYSTEM V2.00.473
 Humidity:65.0%
 Test Distance:9.401m [K=1.0000]
 Remarks:

Planar Illuminance Curve



C Range: 0 - 360DEG
 C Interval: 22.5DEG
 Test Speed: HIGH
 Temperature: 25.3°C
 Operators: DAMIN
 Test Date: 2024-05-29

γ Range: 0 - 180DEG
 γ Interval: 5.0DEG
 Test System: EVERFINE GO-2000B_V1 SYSTEM V2.00.473
 Humidity: 65.0%
 Test Distance: 9.401m [K=1.0000]
 Remarks:

LUMINOUS DISTRIBUTION INTENSITY DATA

Test:U:220.35V I:0.0949A P:20.024W PF:0.9575 Freq:50.00Hz Lamp Flux:1750.62x1 lm		
NAME:	TYPE:	WEIGHT:
SPEC.:	DIM.:	SERIAL No.:
MFR.: EVERFINE	SUR.:	Shielding Angle:

Table--1

UNIT: x10cd

C (DEG) \ γ (DEG)	0	22.5	45	67.5	90	112.5	135	157.5	180	202.5	225	247.5	270	292.5	315	337.5			
0	0.04	0.04	0.04	0.04	0.04	0.04	0.04	0.04	0.04	0.04	0.04	0.04	0.04	0.04	0.04	0.04			
5	0.04	0.03	0.04	0.06	0.04	0.06	0.04	0.05	0.04	0.04	0.05	0.04	0.06	0.04	0.05	0.04			
10	0.04	0.03	0.05	0.09	0.08	0.09	0.06	0.05	0.04	0.05	0.07	0.07	0.10	0.07	0.07	0.03			
15	0.04	0.03	0.07	0.12	0.13	0.13	0.08	0.05	0.04	0.05	0.09	0.10	0.14	0.11	0.09	0.03			
20	0.04	0.03	0.08	0.16	0.18	0.17	0.10	0.06	0.04	0.05	0.11	0.14	0.18	0.14	0.11	0.02			
25	0.04	0.03	0.10	0.20	0.24	0.22	0.13	0.06	0.04	0.06	0.14	0.19	0.25	0.20	0.14	0.02			
30	0.03	0.03	0.12	0.27	0.37	0.29	0.15	0.07	0.04	0.06	0.16	0.25	0.36	0.28	0.17	0.02			
35	0.03	0.03	0.14	0.40	0.58	0.42	0.18	0.08	0.04	0.07	0.18	0.36	0.56	0.42	0.20	0.03			
40	0.03	0.04	0.18	0.63	1.13	0.67	0.23	0.09	0.04	0.07	0.20	0.54	1.06	0.75	0.25	0.03			
45	0.03	0.04	0.24	1.10	2.22	1.18	0.28	0.09	0.04	0.08	0.24	0.86	1.97	1.31	0.34	0.03			
50	0.03	0.04	0.31	1.86	3.78	2.01	0.36	0.10	0.04	0.08	0.29	1.42	3.39	2.20	0.44	0.04			
55	0.03	0.05	0.40	2.85	5.89	3.14	0.47	0.11	0.04	0.09	0.35	2.19	5.16	3.33	0.57	0.04			
60	0.03	0.05	0.51	3.97	9.15	4.53	0.63	0.11	0.04	0.10	0.43	3.12	7.79	4.56	0.74	0.04			
65	0.04	0.05	0.63	5.24	90.2	6.15	0.82	0.12	0.04	0.10	0.52	4.18	66.8	6.03	0.95	0.04			
70	0.04	0.05	0.77	6.69	196	14.42	1.03	0.12	0.04	0.11	0.63	5.41	165	9.91	1.19	0.05			
75	0.04	0.05	0.90	18.62	413	66.1	1.22	0.12	0.04	0.11	0.74	13.96	315	54.5	1.41	0.05			
80	0.04	0.05	1.01	51.8	795	121	1.36	0.12	0.04	0.12	0.83	46.8	639	107	1.60	0.05			
85	0.04	0.05	1.05	77.5	1172	148	1.45	0.12	0.04	0.12	0.89	74.3	1005	138	1.72	0.05			
90	0.04	0.05	1.05	84.7	1295	158	1.46	0.12	0.04	0.12	0.89	84.7	1256	149	1.74	0.05			
95	0.04	0.04	1.01	72.6	1054	144	1.43	0.11	0.04	0.12	0.87	75.3	1145	141	1.71	0.05			
100	0.04	0.04	0.92	42.9	665	114	1.30	0.10	0.04	0.11	0.80	48.4	779	111	1.58	0.05			
105	0.04	0.03	0.71	10.64	221	46.3	1.04	0.08	0.04	0.10	0.61	14.35	283	47.0	1.20	0.03			
110	0.04	0.03	0.42	3.91	10.04	5.19	0.56	0.08	0.03	0.10	0.36	3.83	14.54	5.49	0.71	0.02			
115	0.04	0.04	0.26	2.31	4.15	3.11	0.35	0.08	0.03	0.10	0.21	2.38	4.98	2.92	0.44	0.02			
120	0.04	0.04	0.26	1.20	1.87	1.81	0.34	0.08	0.03	0.10	0.27	1.31	2.10	1.37	0.42	0.03			
125	0.04	0.03	0.26	1.03	1.57	1.46	0.37	0.07	0.03	0.10	0.29	1.17	1.69	1.27	0.38	0.03			
130	0.04	0.03	0.28	0.99	1.74	1.28	0.33	0.06	0.03	0.09	0.29	1.07	1.89	1.26	0.33	0.03			
135	0.04	0.03	0.23	0.74	1.49	0.90	0.29	0.06	0.03	0.09	0.18	0.75	1.52	0.92	0.27	0.02			
140	0.04	0.01	0.18	0.56	0.87	0.66	0.22	0.04	0.03	0.06	0.19	0.55	0.90	0.69	0.21	0.01			
145	0.03	0.01	0.14	0.36	0.52	0.37	0.19	0.04	0.03	0.06	0.06	0.30	0.54	0.41	0.08	0.01			
150	0.03	0.01	0.11	0.23	0.30	0.22	0.15	0.03	0.03	0.05	0.05	0.17	0.32	0.28	0.02	0.01			
155	0.03	0.01	0.07	0.13	0.18	0.13	0.13	0.03	0.03	0.05	0.09	0.01	0.12	0.05	0.09	0.01			
160	0.03	0.01	0.00	0.07	0.11	0.08	0.02	0.02	0.02	0.05	0.01	0.10	0.07	0.12	0.00	0.01			
165	0.03	0.01	0.00	0.00	0.00	0.00	0.01	0.02	0.02	0.04	0.00	0.00	0.00	0.00	0.00	0.01			
170	0.03	0.01	0.00	0.00	0.00	0.00	0.01	0.02	0.02	0.04	0.00	0.00	0.00	0.00	0.00	0.01			
175	0.02	0.02	0.00	0.00	0.00	0.00	0.01	0.02	0.02	0.04	0.00	0.00	0.00	0.00	0.00	0.01			
180	0.02	0.03	0.00	0.00	0.00	0.00	0.00	0.02	0.02	0.03	0.00	0.00	0.00	0.00	0.00	0.02			

C Range: 0 - 360DEG
 C Interval: 22.5DEG
 Test Speed: HIGH
 Temperature:25.3°C
 Operators:DAMIN
 Test Date:2024-05-29

γ Range: 0 - 180DEG
 γ Interval: 5.0DEG
 Test System:EVERFINE GO-2000B_V1 SYSTEM V2.00.473
 Humidity:65.0%
 Test Distance:9.401m [K=1.0000]
 Remarks: