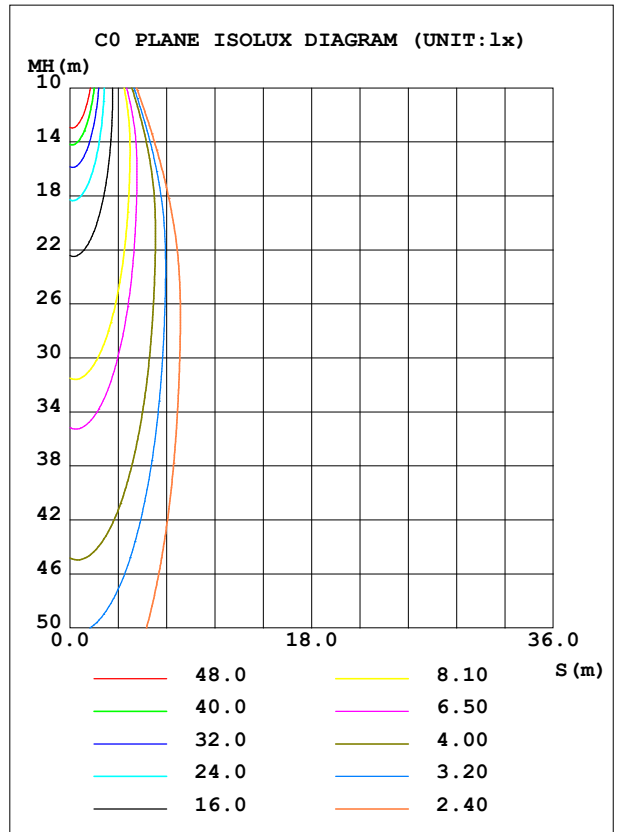
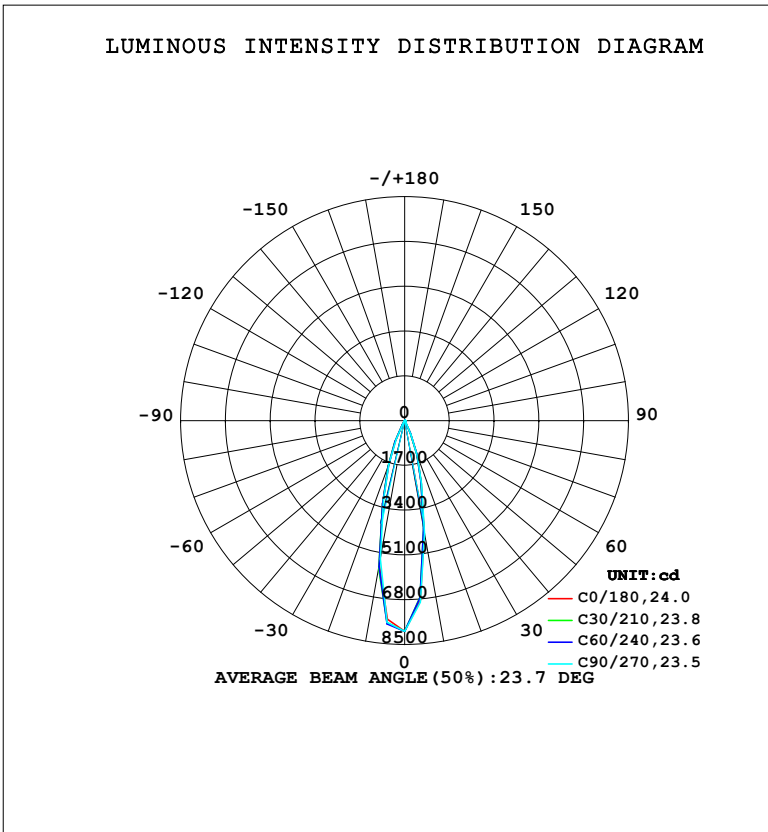


LUMINAIRE PHOTOMETRIC TEST REPORT

Test:U:220.42V I:0.1833A P:22.202W PF:0.5495 Freq:50.00Hz Lamp Flux:1830.23x1 lm		
NAME:	TYPE:	WEIGHT:
SPEC.:	DIM.:	SERIAL No.:
MFR.: EVERFINE	SUR.:	Shielding Angle:

DATA OF LAMP		PHOTOMETRIC DATA				Eff: 82.43 lm/W
MODEL	342BS	I _{max} (cd)	8001	S/MH (C0/180)	0.45	
NOMINAL POWER (W)	7*3	LOR (%)	100.0	S/MH (C90/270)	0.43	
RATED VOLTAGE (V)	220	TOTAL FLUX (lm)	1830.2	η UP, DN (C0-180)	0.0,46.7	
NOMINAL FLUX (lm)	1830.23	CIE CLASS	DIRECT	η UP, DN (C180-360)	0.0,53.3	
LAMPS INSIDE	1	η up (%)	0.0	CIBSE SHR NOM	0.00	
TEST VOLTAGE (V)	219.5	η down (%)	100.0	CIBSE SHR MAX	0.30	



C Range: 0 - 360DEG
C Interval: 15.0DEG
Test Speed: HIGH
Temperature: 25.3°C
Operators: DAMIN
Test Date: 2024-01-23

γ Range: 0 - 90DEG
γ Interval: 5.0DEG
Test System: EVERFINE GO-2000B_V1 SYSTEM V2.00.473
Humidity: 65.0%
Test Distance: 9.401m [K=1.0000]
Remarks:

ZONAL FLUX DIAGRAM

ZONAL FLUX DIAGRAM:

γ	C0	C45	C90	C135	C180	C225	C270	C315	γ	Φ zone	Φ total	%lum,lamp
10	4324	4180	4360	4979	5585	5617	5328	4715	0- 10	616.2	616.2	33.7,33.7
20	1393	1371	1452	1606	1802	1823	1756	1539	10- 20	820.6	1437	78.5,78.5
30	89.92	87.63	98.08	139.0	175.0	264.9	157.5	122.2	20- 30	345.8	1783	97.4,97.4
40	16.60	13.92	13.34	15.80	19.62	24.34	24.13	23.31	30- 40	37.09	1820	99.4,99.4
50	4.644	3.480	3.388	4.269	5.418	6.125	5.811	6.542	40- 50	8.266	1828	99.9,99.9
60	0.3925	0.3055	0.5259	0.5723	0.6931	0.6450	0.5045	0.5461	50- 60	2.149	1830	100,100
70	0	0	0	0	0	0	0	0	60- 70	0.1345	1830	100,100
80	0	0	0	0	0	0	0	0	70- 80	0.0000	1830	100,100
90	0	0	0	0	0	0	0	0	80- 90	0	1830	100,100
100									90-100			
110									100-110			
120									110-120			
130									120-130			
140									130-140			
150									140-150			
160									150-160			
170									160-170			
180									170-180			
DEG	LUMINOUS INTENSITY:cd									UNIT:lm		

Conical surface Flux(90deg): 1825 lm

%lum = 99.7%

%lamp = 99.7%

Conical surface Flux(130deg): 1830.2 lm

%lum = 100.0%

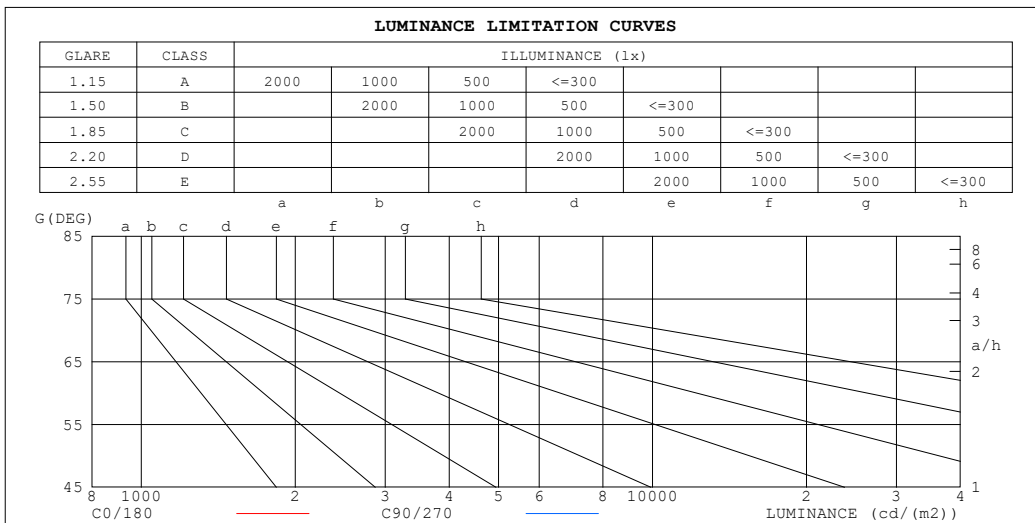
%lamp = 100.0%

C Range: 0 - 360DEG
 C Interval: 15.0DEG
 Test Speed: HIGH
 Temperature:25.3°C
 Operators:DAMIN
 Test Date:2024-01-23

γ Range: 0 - 90DEG
 γ Interval: 5.0DEG
 Test System:EVERFINE GO-2000B_V1 SYSTEM V2.00.473
 Humidity:65.0%
 Test Distance:9.401m [K=1.0000]
 Remarks:

LUMINANCE LIMITATION CURVES

Test:U:220.42V I:0.1833A P:22.202W PF:0.5495 Freq:50.00Hz Lamp Flux:1830.23x1 lm		
NAME:	TYPE:	WEIGHT:
SPEC.:	DIM.:	SERIAL No.:
MFR.: EVERFINE	SUR.:	Shielding Angle:



LUMINANCE cd/ (m2)		
G (DEG)	C0/180	C90/270
85	0	0
80	0	0
75	0	0
70	0	0
65	0	0
60	8	11
55	35	27
50	73	53
45	126	94

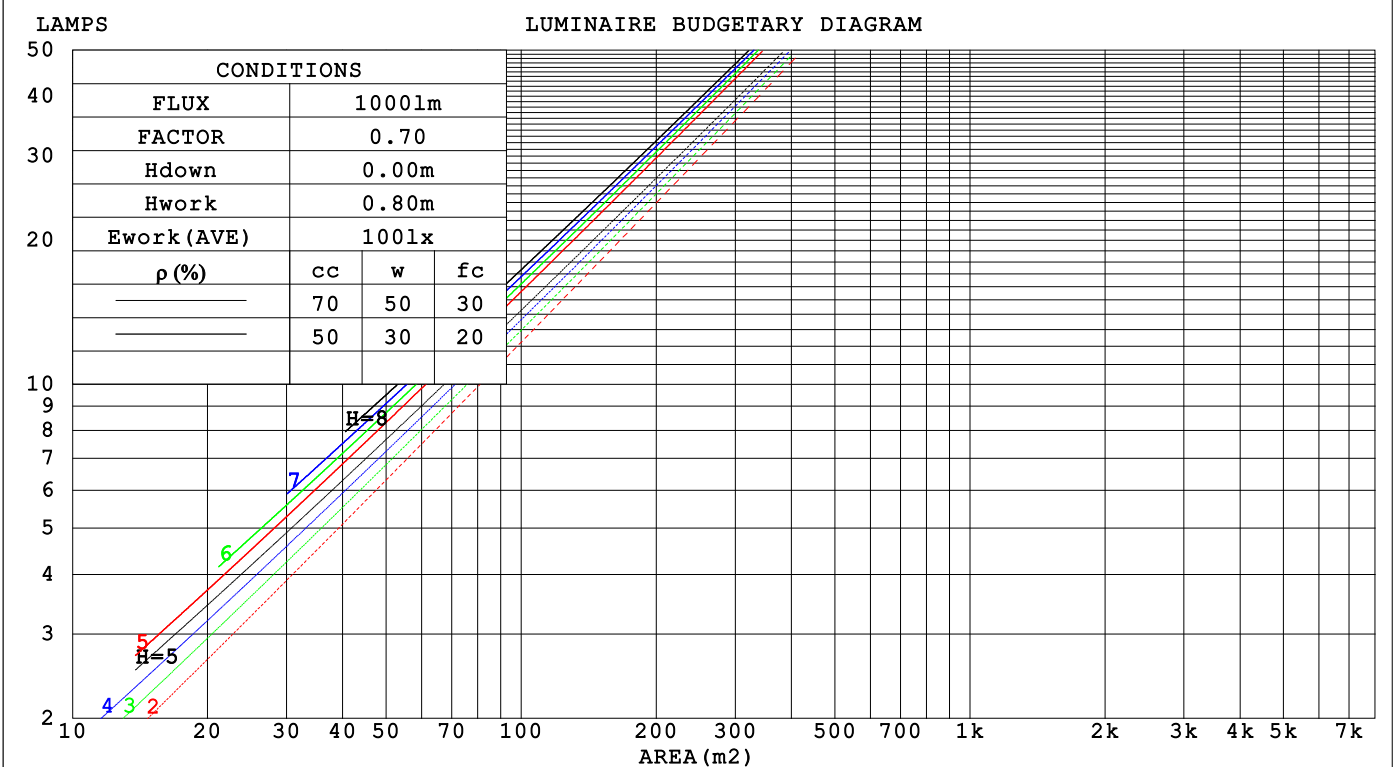
C Range: 0 - 360DEG
 C Interval: 15.0DEG
 Test Speed: HIGH
 Temperature:25.3°C
 Operators:DAMIN
 Test Date:2024-01-23

γ Range: 0 - 90DEG
 γ Interval: 5.0DEG
 Test System:EVERFINE GO-2000B_V1 SYSTEM V2.00.473
 Humidity:65.0%
 Test Distance:9.401m [K=1.0000]
 Remarks:

CU AND LUMINAIRE BUDGETARY ESTIMATE DIAGRAM

Test:U:220.42V I:0.1833A P:22.202W PF:0.5495 Freq:50.00Hz Lamp Flux:1830.23x1 lm		
NAME:	TYPE:	WEIGHT:
SPEC.:	DIM.:	SERIAL No.:
MFR.: EVERFINE	SUR.:	Shielding Angle:

ρcc	80%			70%			50%			30%			10%			0
ρw	50%	30%	10%	50%	30%	10%	50%	30%	10%	50%	30%	10%	50%	30%	10%	0
ρfc	20%			20%			20%			20%			20%			0
RCR	RCR:Room Cavity Ratio															
	Coefficients of Utilization(CU)															
0.0	1.19	1.19	1.19	1.16	1.16	1.16	1.11	1.11	1.11	1.06	1.06	1.06	1.02	1.02	1.02	1.00
1.0	1.13	1.11	1.09	1.11	1.09	1.08	1.07	1.06	1.04	1.03	1.02	1.01	.00	.99	.98	.97
2.0	1.08	1.05	1.02	1.06	1.03	1.01	1.03	1.01	.99	1.00	.98	.97	.97	.96	.95	.93
3.0	1.03	.00	.97	1.02	.99	.96	.99	.97	.94	.97	.95	.93	.95	.93	.92	.90
4.0	.99	.95	.92	.98	.94	.92	.96	.93	.91	.94	.92	.90	.93	.90	.89	.87
5.0	.95	.91	.88	.95	.91	.88	.93	.90	.87	.91	.89	.86	.90	.88	.86	.85
6.0	.92	.88	.85	.91	.88	.85	.90	.87	.84	.89	.86	.84	.88	.85	.83	.82
7.0	.89	.85	.82	.89	.85	.82	.87	.84	.81	.86	.83	.81	.85	.83	.81	.80
8.0	.86	.82	.79	.86	.82	.79	.85	.81	.79	.84	.81	.79	.83	.80	.78	.77
9.0	.84	.80	.77	.83	.79	.77	.83	.79	.77	.82	.79	.76	.81	.78	.76	.75
10.0	.81	.77	.75	.81	.77	.75	.80	.77	.74	.80	.77	.74	.79	.76	.74	.73



C Range: 0 - 360DEG
 C Interval: 15.0DEG
 Test Speed: HIGH
 Temperature:25.3°C
 Operators:DAMIN
 Test Date:2024-01-23

γ Range: 0 - 90DEG
 γ Interval: 5.0DEG
 Test System:EVERFINE GO-2000B_V1 SYSTEM V2.00.473
 Humidity:65.0%
 Test Distance:9.401m [K=1.0000]
 Remarks:

WEC AND CCEC

Test:U:220.42V I:0.1833A P:22.202W PF:0.5495 Freq:50.00Hz																	
Lamp Flux:1830.23x1 lm																	
NAME:						TYPE:						WEIGHT:					
SPEC.:						DIM.:						SERIAL No.:					
MFR.: EVERFINE						SUR.:						Shielding Angle:					

ρ_{CC}	80%			70%			50%			30%			10%			0
ρ_w	50%	30%	10%	50%	30%	10%	50%	30%	10%	50%	30%	10%	50%	30%	10%	0
ρ_{fc}	20%			20%			20%			20%			20%			0
RCR	RCR:Room Cavity Ratio						Wall Exitance Coefficients (WEC)									
0.0																
1.0	.136	.077	.025	.130	.074	.023	.117	.067	.021	.106	.061	.020	.095	.055	.018	
2.0	.126	.069	.021	.121	.067	.021	.111	.062	.019	.101	.057	.018	.093	.052	.016	
3.0	.118	.063	.019	.113	.061	.018	.105	.057	.017	.097	.053	.016	.090	.050	.015	
4.0	.110	.057	.017	.107	.056	.017	.100	.053	.016	.093	.050	.015	.087	.047	.014	
5.0	.104	.053	.015	.101	.052	.015	.095	.049	.015	.089	.047	.014	.084	.045	.013	
6.0	.099	.050	.014	.096	.048	.014	.091	.046	.014	.086	.045	.013	.081	.043	.013	
7.0	.094	.046	.013	.092	.046	.013	.087	.044	.013	.083	.042	.012	.079	.041	.012	
8.0	.090	.044	.012	.088	.043	.012	.084	.042	.012	.080	.040	.012	.076	.039	.011	
9.0	.086	.042	.012	.084	.041	.011	.080	.040	.011	.077	.039	.011	.074	.038	.011	
10.0	.082	.039	.011	.081	.039	.011	.078	.038	.011	.075	.037	.011	.072	.036	.010	

ρ_{CC}	80%			70%			50%			30%			10%			0
ρ_w	50%	30%	10%	50%	30%	10%	50%	30%	10%	50%	30%	10%	50%	30%	10%	0
ρ_{fc}	20%			20%			20%			20%			20%			0
RCR	RCR:Room Cavity Ratio						Ceiling Cavity Exitance Coefficients (CCEC)									
0.0																
1.0	.190	.190	.190	.163	.163	.163	.111	.111	.111	.064	.064	.064	.020	.020	.020	
2.0	.150	.133	.118	.129	.114	.102	.088	.079	.071	.051	.046	.042	.016	.015	.014	
3.0	.135	.113	.096	.116	.098	.083	.080	.068	.058	.046	.040	.034	.015	.013	.011	
4.0	.123	.098	.079	.105	.085	.069	.072	.059	.048	.042	.035	.029	.013	.011	.009	
5.0	.112	.086	.066	.096	.074	.057	.066	.052	.040	.038	.030	.024	.012	.010	.008	
6.0	.103	.076	.056	.089	.065	.048	.061	.046	.034	.036	.027	.020	.011	.009	.007	
7.0	.096	.067	.048	.082	.058	.041	.057	.041	.029	.033	.024	.017	.011	.008	.006	
8.0	.089	.061	.041	.077	.053	.036	.053	.037	.025	.031	.022	.015	.010	.007	.005	
9.0	.084	.055	.036	.072	.048	.031	.050	.034	.022	.029	.020	.013	.009	.007	.004	
10.0	.079	.050	.031	.068	.044	.027	.047	.031	.019	.028	.018	.012	.009	.006	.004	

C Range: 0 - 360DEG
 C Interval: 15.0DEG
 Test Speed: HIGH
 Temperature:25.3°C
 Operators:DAMIN
 Test Date:2024-01-23

γ Range: 0 - 90DEG
 γ Interval: 5.0DEG
 Test System:EVERFINE GO-2000B_V1 SYSTEM V2.00.473
 Humidity:65.0%
 Test Distance:9.401m [K=1.0000]
 Remarks:

UGR(Unified Glare Rating) Table

Test:U:220.42V I:0.1833A P:22.202W PF:0.5495 Freq:50.00Hz										
Lamp Flux:1830.23x1 lm										
NAME:			TYPE:				WEIGHT:			
SPEC.:			DIM.:				SERIAL No.:			
MFR.: EVERFINE			SUR.:				Shielding Angle:			
ceiling/cavity	0.7	0.7	0.5	0.5	0.3	0.7	0.7	0.5	0.5	0.3
walls	0.5	0.3	0.5	0.3	0.3	0.5	0.3	0.5	0.3	0.3
working plane	0.2	0.2	0.2	0.2	0.2	0.2	0.2	0.2	0.2	0.2
Room dimensions	Viewed crosswise					Viewed endwise				
x = 2H y = 2H	-12.3	-11.7	-12.1	-11.5	-11.4	-12.9	-12.2	-12.7	-12.1	-11.9
3H	-12.5	-11.9	-12.2	-11.7	-11.5	-13.0	-12.4	-12.8	-12.2	-12.0
4H	-12.5	-12.0	-12.3	-11.8	-11.6	-13.1	-12.5	-12.8	-12.3	-12.1
6H	-12.6	-12.1	-12.4	-11.9	-11.6	-13.2	-12.6	-12.9	-12.4	-12.2
8H	-12.7	-12.2	-12.4	-11.9	-11.7	-13.2	-12.7	-12.9	-12.4	-12.2
12H	-12.7	-12.2	-12.4	-12.0	-11.7	-13.3	-12.8	-13.0	-12.5	-12.2
4H 2H	-12.5	-12.0	-12.3	-11.8	-11.5	-13.1	-12.5	-12.8	-12.3	-12.1
3H	-12.7	-12.2	-12.4	-11.9	-11.7	-13.3	-12.7	-12.9	-12.5	-12.2
4H	-12.8	-12.3	-12.5	-12.1	-11.8	-13.3	-12.9	-13.0	-12.6	-12.3
6H	-12.9	-12.5	-12.5	-12.2	-11.8	-13.5	-13.0	-13.1	-12.7	-12.4
8H	-13.0	-12.6	-12.6	-12.2	-11.9	-13.5	-13.1	-13.1	-12.8	-12.4
12H	-13.0	-12.7	-12.6	-12.3	-11.9	-13.6	-13.2	-13.2	-12.8	-12.5
8H 4H	-13.0	-12.6	-12.6	-12.2	-11.9	-13.5	-13.1	-13.1	-12.8	-12.4
6H	-13.1	-12.8	-12.7	-12.4	-12.0	-13.6	-13.3	-13.2	-12.9	-12.5
8H	-13.1	-12.9	-12.7	-12.4	-12.0	-13.7	-13.4	-13.2	-13.0	-12.5
12H	-13.2	-13.0	-12.7	-12.5	-12.1	-13.7	-13.5	-13.3	-13.1	-12.6
12H 4H	-13.0	-12.7	-12.6	-12.3	-11.9	-13.6	-13.2	-13.2	-12.8	-12.5
6H	-13.1	-12.9	-12.7	-12.4	-12.0	-13.7	-13.4	-13.2	-13.0	-12.5
8H	-13.2	-13.0	-12.7	-12.5	-12.1	-13.7	-13.5	-13.3	-13.1	-12.6
Variations with the observer position at spacings(CIE Pub.117):										
S = 1.0H	+ 3.3 / -15.1					+ 2.8 / -12.5				
1.5H	+ 4.8 / -12.5					+ 4.2 / -10.7				
2.0H	+ 7.3 / -72.0					+ 6.0 / -67.3				

CIE Pub.117, 1830 lm Total Lamp Luminous Flux Correct (8log(F/F0) = 2.1)
 Area: 0.1 m2

C Range: 0 - 360DEG
 C Interval: 15.0DEG
 Test Speed: HIGH
 Temperature:25.3°C
 Operators:DAMIN
 Test Date:2024-01-23

γ Range: 0 - 90DEG
 γ Interval: 5.0DEG
 Test System:EVERFINE GO-2000B_V1 SYSTEM V2.00.473
 Humidity:65.0%
 Test Distance:9.401m [K=1.0000]
 Remarks:

UTILIZATION FACTORS TABLE

Test:U:220.42V I:0.1833A P:22.202W PF:0.5495 Freq:50.00Hz Lamp Flux:1830.23x1 lm		
NAME:	TYPE:	WEIGHT:
SPEC.:	DIM.:	SERIAL No.:
MFR.: EVERFINE	SUR.:	Shielding Angle:

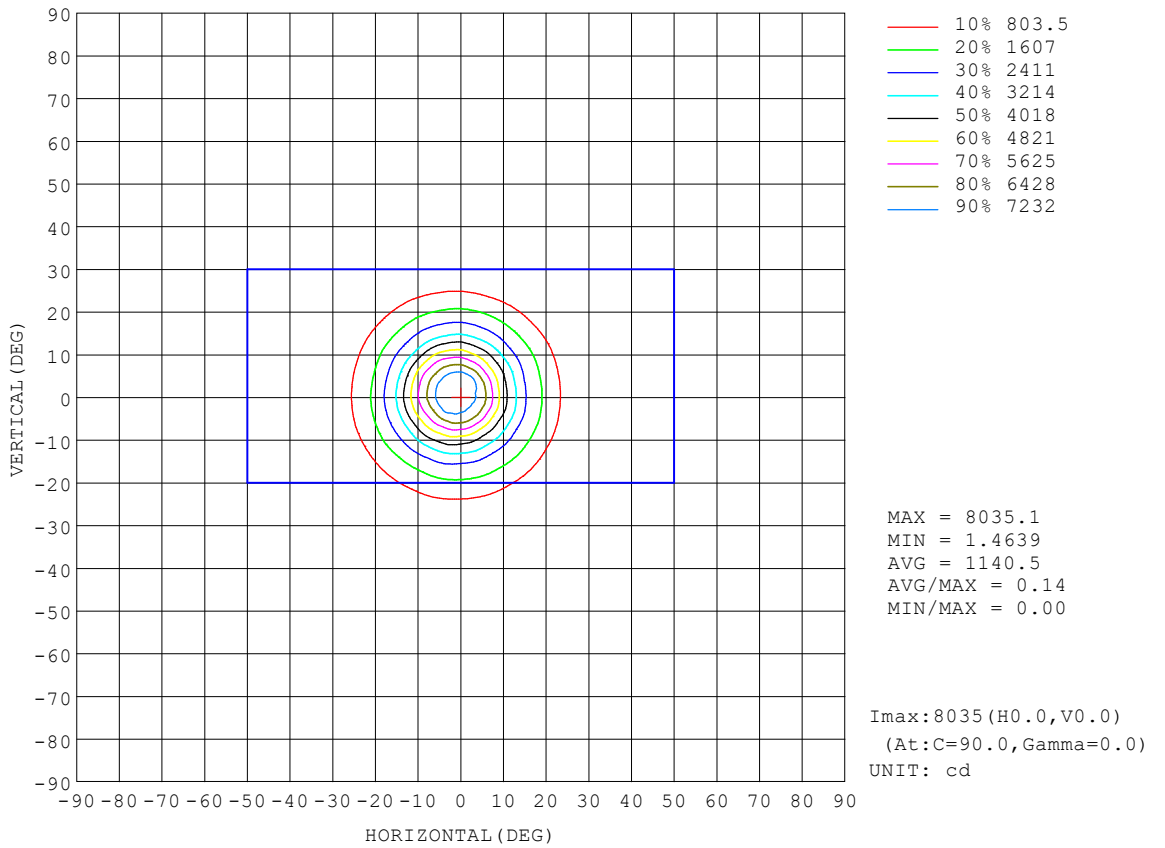
REFLECTANCE										
Ceiling	0.8	0.8	0.8	0.7	0.7	0.7	0.5	0.5	0.5	0
Walls	0.7	0.5	0.3	0.7	0.5	0.3	0.7	0.5	0.3	0
Working plane	0.2	0.2	0.2	0.2	0.2	0.2	0.2	0.2	0.2	0
ROOM INDEX	UTILIZATION FACTORS (PERCENT) $k(RI) \times RCR = 5$									
$k = 0.60$	91	86	82	91	85	82	90	85	82	79
0.80	98	93	90	98	93	90	96	92	89	86
1.00	102	97	94	101	96	93	100	96	93	89
1.25	105	101	98	104	100	97	103	99	97	93
1.50	108	104	101	107	103	100	104	101	99	95
2.00	110	106	103	109	105	103	106	103	101	96
2.50	111	108	105	110	107	104	107	104	102	97
3.00	113	110	107	111	108	106	108	106	104	98
4.00	115	112	110	113	111	109	109	107	106	99
5.00	116	114	112	114	112	111	110	109	107	100
ROOM INDEX	UF(total)									Direct
According to DIN EN 13032-2 2004			Suspended				SHRNOM = 1.25			

C Range: 0 - 360DEG
 C Interval: 15.0DEG
 Test Speed: HIGH
 Temperature:25.3°C
 Operators:DAMIN
 Test Date:2024-01-23

γ Range: 0 - 90DEG
 γ Interval: 5.0DEG
 Test System:EVERFINE GO-2000B_V1 SYSTEM V2.00.473
 Humidity:65.0%
 Test Distance:9.401m [K=1.0000]
 Remarks:

ISOCANDELA DIAGRAM

Test:U:220.42V I:0.1833A P:22.202W PF:0.5495 Freq:50.00Hz Lamp Flux:1830.23x1 lm		
NAME:	TYPE:	WEIGHT:
SPEC.:	DIM.:	SERIAL No.:
MFR.: EVERFINE	SUR.:	Shielding Angle:

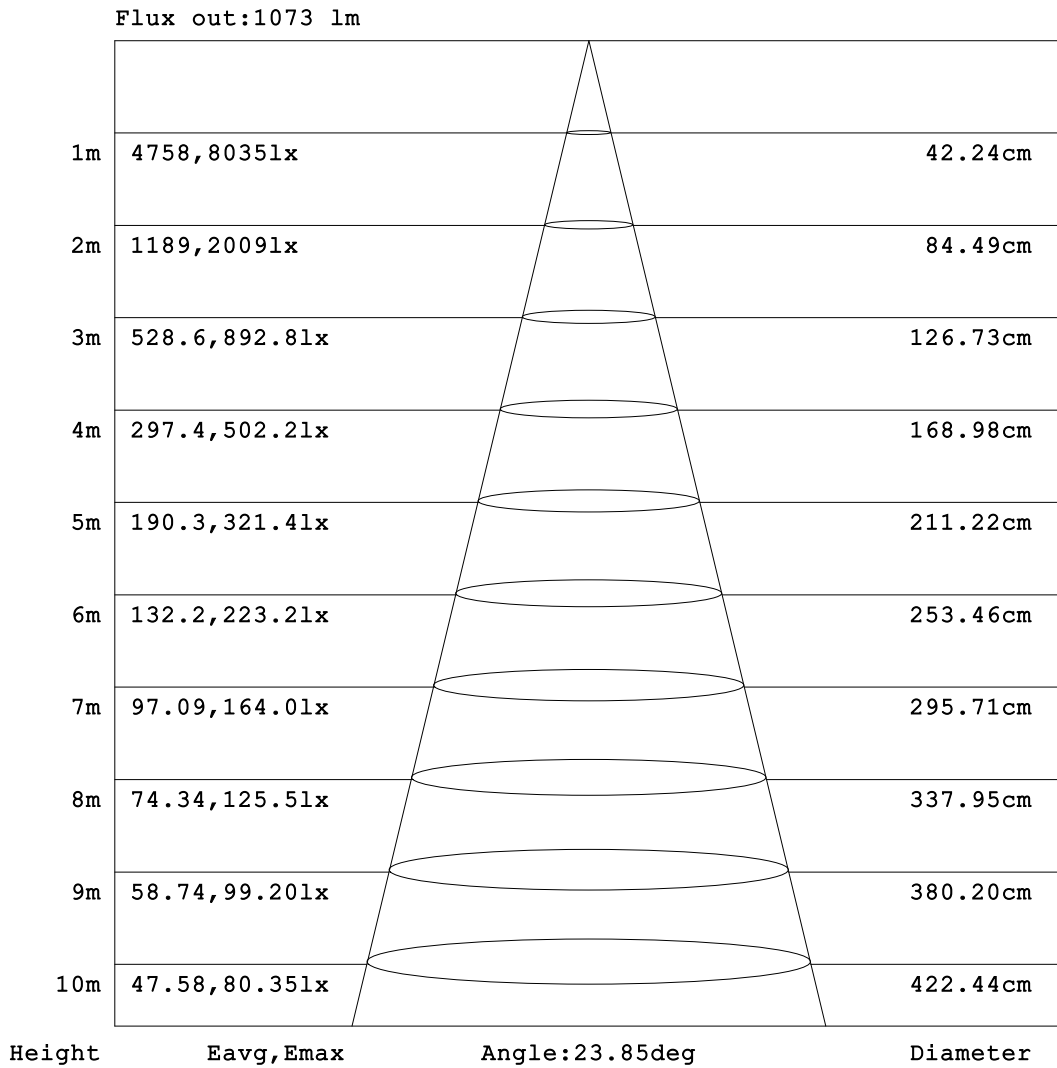


C Range: 0 - 360DEG
 C Interval: 15.0DEG
 Test Speed: HIGH
 Temperature:25.3°C
 Operators:DAMIN
 Test Date:2024-01-23

γ Range: 0 - 90DEG
 γ Interval: 5.0DEG
 Test System:EVERFINE GO-2000B_V1 SYSTEM V2.00.473
 Humidity:65.0%
 Test Distance:9.401m [K=1.0000]
 Remarks:

AAI Figure

Test:U:220.42V I:0.1833A P:22.202W PF:0.5495 Freq:50.00Hz Lamp Flux:1830.23x1 lm		
NAME:	TYPE:	WEIGHT:
SPEC.:	DIM.:	SERIAL No.:
MFR.: EVERFINE	SUR.:	Shielding Angle:



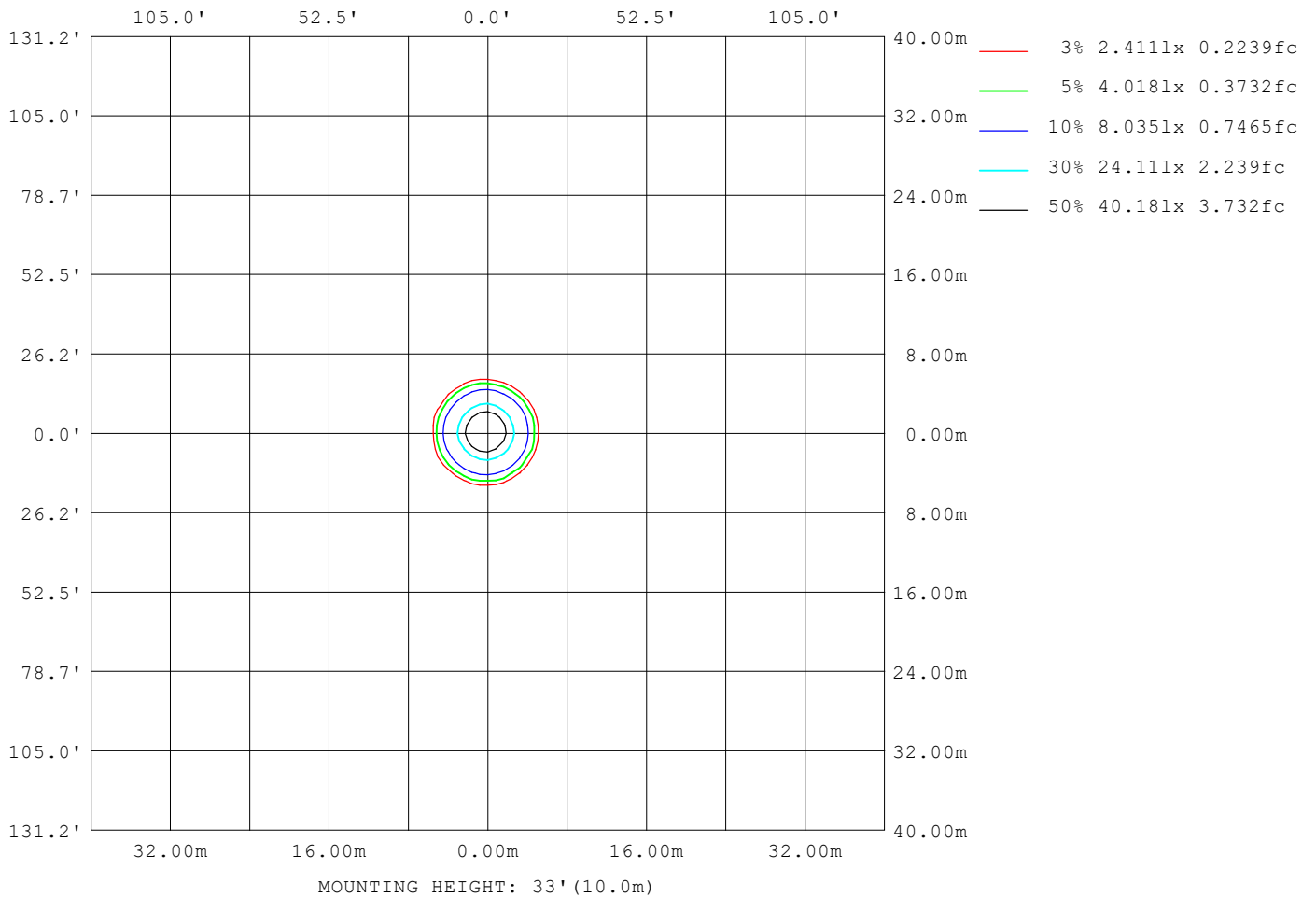
Note: The Curves indicate the illuminated area and the average illumination when the luminaire is at different distance.

C Range: 0 - 360DEG
 C Interval: 15.0DEG
 Test Speed: HIGH
 Temperature: 25.3°C
 Operators: DAMIN
 Test Date: 2024-01-23

γ Range: 0 - 90DEG
 γ Interval: 5.0DEG
 Test System: EVERFINE GO-2000B_V1 SYSTEM V2.00.473
 Humidity: 65.0%
 Test Distance: 9.401m [K=1.0000]
 Remarks:

ISOLUX DIAGRAM

Test:U:220.42V I:0.1833A P:22.202W PF:0.5495 Freq:50.00Hz Lamp Flux:1830.23x1 lm		
NAME:	TYPE:	WEIGHT:
SPEC.:	DIM.:	SERIAL No.:
MFR.: EVERFINE	SUR.:	Shielding Angle:



C Range: 0 - 360DEG
 C Interval: 15.0DEG
 Test Speed: HIGH
 Temperature:25.3°C
 Operators:DAMIN
 Test Date:2024-01-23

γ Range: 0 - 90DEG
 γ Interval: 5.0DEG
 Test System:EVERFINE GO-2000B_V1 SYSTEM V2.00.473
 Humidity:65.0%
 Test Distance:9.401m [K=1.0000]
 Remarks:

LED Avg.L Report

Test:U:220.42V I:0.1833A P:22.202W PF:0.5495 Freq:50.00Hz Lamp Flux:1830.23x1 lm		
NAME:	TYPE:	WEIGHT:
SPEC.:	DIM.:	SERIAL No.:
MFR.: EVERFINE	SUR.:	Shielding Angle:

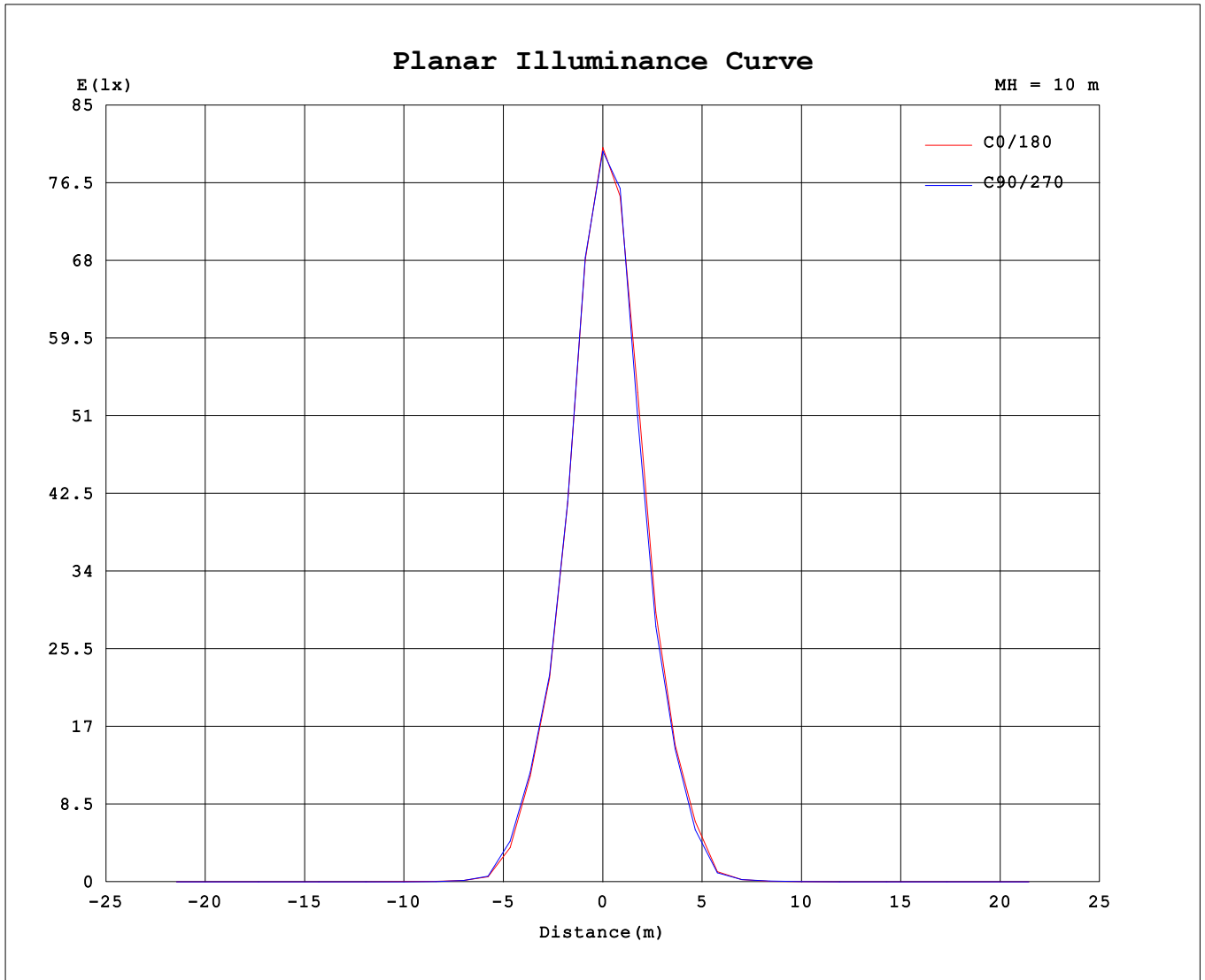
AvgL	cd/m2
L_0~180 (65) av	0
L_0~180 (75) av	0
L_0~180 (85) av	0
L_90~270 (65) av	0
L_90~270 (75) av	0
L_90~270 (85) av	0
L_45 (65) av	0
L_45 (75) av	0
L_45 (85) av	0

Standard: GB/T 29293-2012

C Range: 0 - 360DEG
 C Interval: 15.0DEG
 Test Speed: HIGH
 Temperature:25.3°C
 Operators:DAMIN
 Test Date:2024-01-23

γ Range: 0 - 90DEG
 γ Interval: 5.0DEG
 Test System:EVERFINE GO-2000B_V1 SYSTEM V2.00.473
 Humidity:65.0%
 Test Distance:9.401m [K=1.0000]
 Remarks:

Planar Illuminance Curve



C Range: 0 - 360DEG
 C Interval: 15.0DEG
 Test Speed: HIGH
 Temperature: 25.3°C
 Operators: DAMIN
 Test Date: 2024-01-23

γ Range: 0 - 90DEG
 γ Interval: 5.0DEG
 Test System: EVERFINE GO-2000B_V1 SYSTEM V2.00.473
 Humidity: 65.0%
 Test Distance: 9.401m [K=1.0000]
 Remarks:

LUMINOUS DISTRIBUTION INTENSITY DATA

Test:U:220.42V I:0.1833A P:22.202W PF:0.5495 Freq:50.00Hz Lamp Flux:1830.23x1 lm		
NAME:	TYPE:	WEIGHT:
SPEC.:	DIM.:	SERIAL No.:
MFR.: EVERFINE	SUR.:	Shielding Angle:

Table--2

UNIT: cd

C (DEG) \ γ (DEG)	285	300	315	330	345														
0	8001	8001	8001	8001	8001														
5	7535	7431	7228	7133	6960														
10	5059	4948	4715	4596	4402														
15	2930	2849	2695	2642	2509														
20	1684	1609	1539	1516	1436														
25	679	662	605	602	541														
30	138	134	122	112	97.4														
35	46.7	46.3	45.3	41.7	36.2														
40	22.1	23.5	23.3	21.0	17.7														
45	10.7	12.3	12.6	10.8	8.79														
50	5.02	6.31	6.54	5.26	4.11														
55	2.09	2.64	2.82	1.98	1.65														
60	0.51	0.52	0.55	0.30	0.36														
65	0.01	0.00	0.01	0.00	0.00														
70	0.00	0.00	0.00	0.00	0.00														
75	0.00	0.00	0.00	0.00	0.00														
80	0.00	0.00	0.00	0.00	0.00														
85	0.00	0.00	0.00	0.00	0.00														
90	0.00	0.00	0.00	0.00	0.00														

C Range: 0 - 360DEG
 C Interval: 15.0DEG
 Test Speed: HIGH
 Temperature:25.3°C
 Operators:DAMIN
 Test Date:2024-01-23

γ Range: 0 - 90DEG
 γ Interval: 5.0DEG
 Test System:EVERFINE GO-2000B_V1 SYSTEM V2.00.473
 Humidity:65.0%
 Test Distance:9.401m [K=1.0000]
 Remarks: