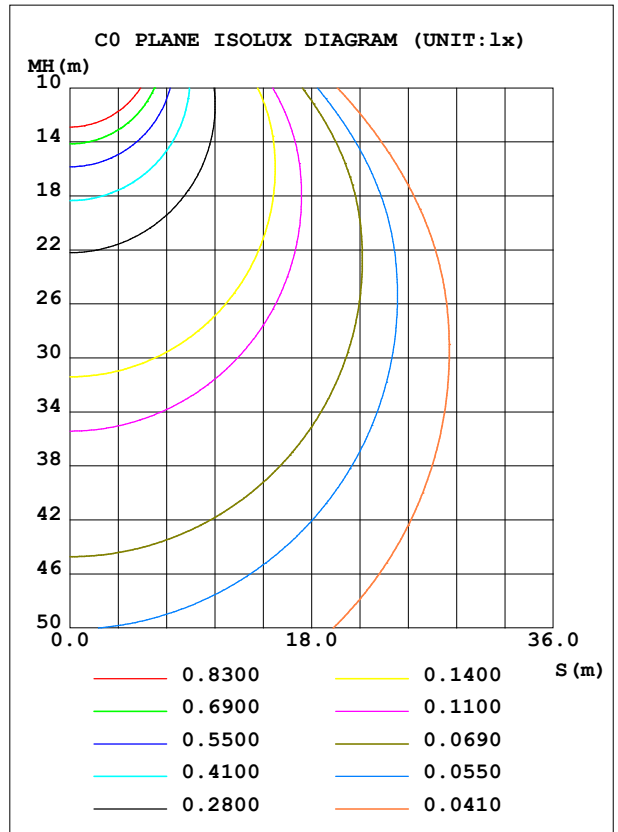
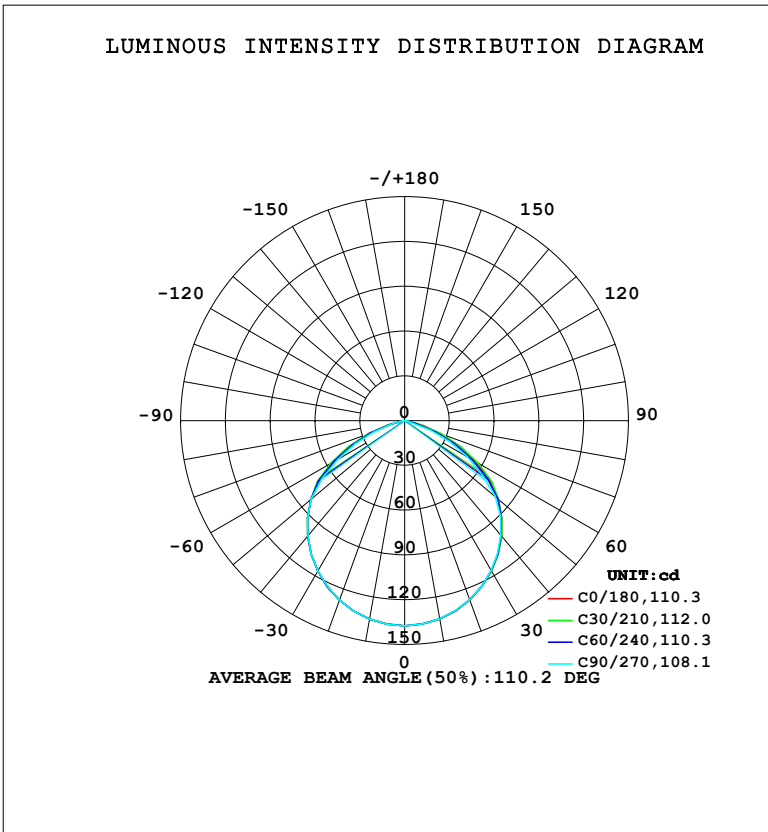


LUMINAIRE PHOTOMETRIC TEST REPORT

Test:U:220.46V I:0.0430A P:5.4645W PF:0.5762 Freq:50.00Hz Lamp Flux:358.26x1 lm		
NAME:	TYPE:	WEIGHT:
SPEC.:	DIM.:	SERIAL No.:
MFR.: EVERFINE	SUR.:	Shielding Angle:

DATA OF LAMP		PHOTOMETRIC DATA				Eff: 65.56 lm/W
MODEL	123S	I _{max} (cd)	137.4	S/MH (C0/180)	1.26	
NOMINAL POWER (W)	5	LOR (%)	100.0	S/MH (C90/270)	1.26	
RATED VOLTAGE (V)	220	TOTAL FLUX (lm)	358.26	η UP, DN (C0-180)	0.0, 49.7	
NOMINAL FLUX (lm)	358.26	CIE CLASS	DIRECT	η UP, DN (C180-360)	0.0, 50.3	
LAMPS INSIDE	1	η up (%)	0.0	CIBSE SHR NOM	1.25	
TEST VOLTAGE (V)	219.5	η down (%)	100.0	CIBSE SHR MAX	1.35	



C Range: 0 - 360DEG
 C Interval: 15.0DEG
 Test Speed: HIGH
 Temperature: 25.3°C
 Operators: DAMIN
 Test Date: 2024-01-27

γ Range: 0 - 90DEG
 γ Interval: 5.0DEG
 Test System: EVERFINE GO-2000B_V1 SYSTEM V2.00.473
 Humidity: 65.0%
 Test Distance: 9.401m [K=1.0000]
 Remarks:

ZONAL FLUX DIAGRAM

ZONAL FLUX DIAGRAM:

γ	C0	C45	C90	C135	C180	C225	C270	C315	γ	Φ zone	Φ total	%lum,lamp
10	134.9	134.9	134.8	134.9	135.0	134.9	135.0	135.0	0- 10	13.00	13.00	3.63,3.63
20	127.9	127.8	127.6	127.7	127.9	127.8	127.9	127.9	10- 20	37.24	50.24	14,14
30	116.5	116.4	116.0	116.3	116.4	116.4	116.4	116.4	20- 30	56.50	106.7	29.8,29.8
40	101.1	101.1	100.3	100.9	101.0	101.0	100.9	101.1	30- 40	68.25	175.0	48.8,48.8
50	82.03	82.18	79.28	81.89	81.76	82.06	81.77	82.30	40- 50	70.77	245.8	68.6,68.6
60	54.84	57.34	48.33	56.03	54.38	58.17	51.71	58.19	50- 60	61.37	307.1	85.7,85.7
70	26.45	23.55	18.92	22.67	25.58	23.91	22.09	24.41	60- 70	38.57	345.7	96.5,96.5
80	1.811	1.309	1.195	1.223	1.472	1.592	1.601	1.688	70- 80	11.76	357.5	99.8,99.8
90	0.1499	0.1323	0.1205	0.1328	0.1618	0.1864	0.2169	0.2293	80- 90	0.7915	358.3	100,100
100									90-100			
110									100-110			
120									110-120			
130									120-130			
140									130-140			
150									140-150			
160									150-160			
170									160-170			
180									170-180			
DEG	LUMINOUS INTENSITY:cd									UNIT:lm		

Conical surface Flux(90deg): 210.69 lm

%lum = 58.8%

%lamp = 58.8%

Conical surface Flux(130deg): 329.82 lm

%lum = 92.1%

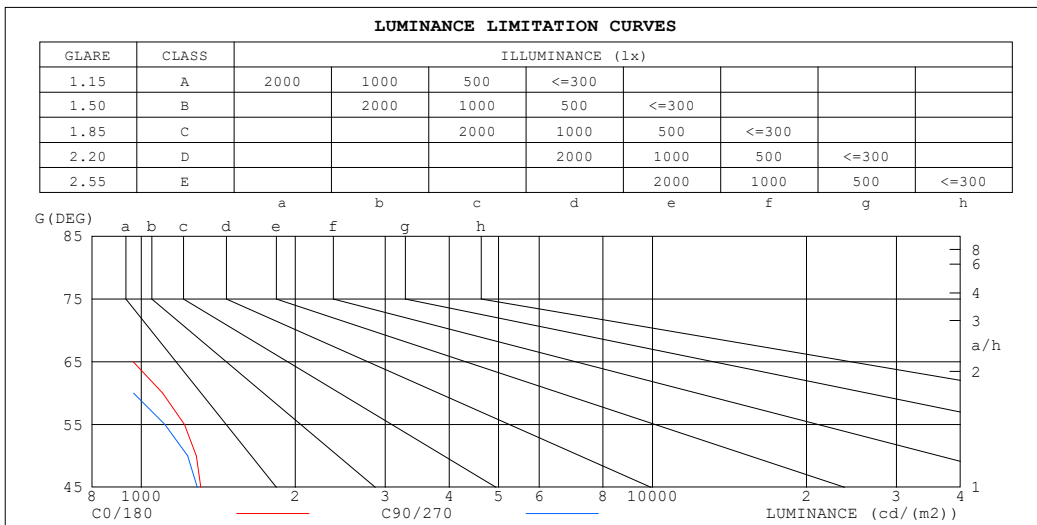
%lamp = 92.1%

C Range: 0 - 360DEG
 C Interval: 15.0DEG
 Test Speed: HIGH
 Temperature:25.3°C
 Operators:DAMIN
 Test Date:2024-01-27

γ Range: 0 - 90DEG
 γ Interval: 5.0DEG
 Test System:EVERFINE GO-2000B_V1 SYSTEM V2.00.473
 Humidity:65.0%
 Test Distance:9.401m [K=1.0000]
 Remarks:

LUMINANCE LIMITATION CURVES

Test:U:220.46V I:0.0430A P:5.4645W PF:0.5762 Freq:50.00Hz Lamp Flux:358.26x1 lm		
NAME:	TYPE:	WEIGHT:
SPEC.:	DIM.:	SERIAL No.:
MFR.: EVERFINE	SUR.:	Shielding Angle:



LUMINANCE cd/(m2)		
G (DEG)	C0/180	C90/270
85	79	51
80	105	69
75	499	132
70	777	553
65	965	787
60	1102	966
55	1215	1112
50	1282	1232
45	1308	1286

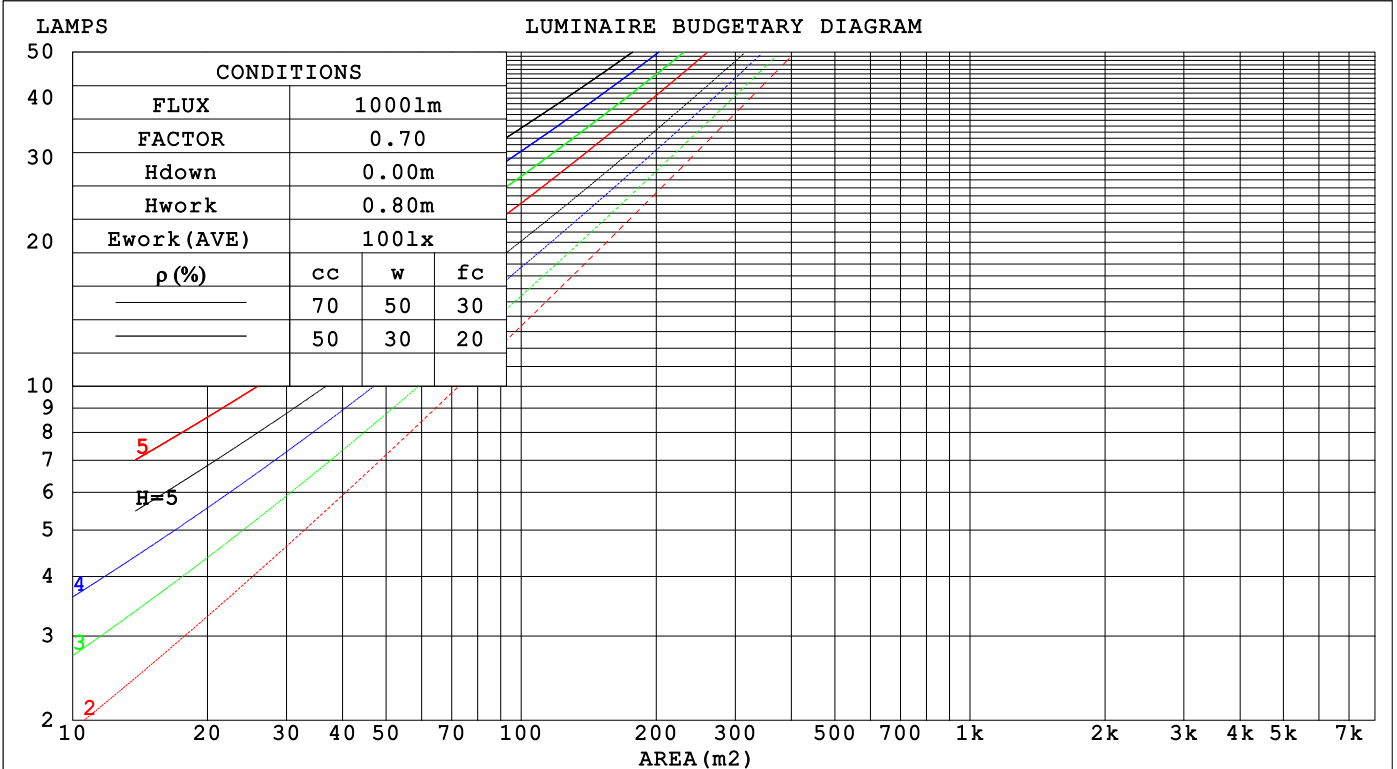
C Range: 0 - 360DEG
 C Interval: 15.0DEG
 Test Speed: HIGH
 Temperature: 25.3°C
 Operators: DAMIN
 Test Date: 2024-01-27

γ Range: 0 - 90DEG
 γ Interval: 5.0DEG
 Test System: EVERFINE GO-2000B_V1 SYSTEM V2.00.473
 Humidity: 65.0%
 Test Distance: 9.401m [K=1.0000]
 Remarks:

CU AND LUMINAIRE BUDGETARY ESTIMATE DIAGRAM

Test:U:220.46V I:0.0430A P:5.4645W PF:0.5762 Freq:50.00Hz Lamp Flux:358.26x1 lm		
NAME:	TYPE:	WEIGHT:
SPEC.:	DIM.:	SERIAL No.:
MFR.: EVERFINE	SUR.:	Shielding Angle:

ρ_{cc}	80%			70%			50%			30%			10%			0
ρ_w	50%	30%	10%	50%	30%	10%	50%	30%	10%	50%	30%	10%	50%	30%	10%	0
ρ_{fc}	20%			20%			20%			20%			20%			0
RCR	RCR:Room Cavity Ratio Coefficients of Utilization(CU)															
0.0	1.19	1.19	1.19	1.16	1.16	1.16	1.11	1.11	1.11	1.06	1.06	1.06	1.02	1.02	1.02	1.00
1.0	1.06	1.02	.99	1.04	1.00	.97	.99	.97	.94	.96	.93	.91	.92	.90	.89	.87
2.0	.93	.87	.82	.91	.86	.81	.88	.83	.79	.85	.81	.77	.82	.78	.76	.73
3.0	.82	.75	.69	.81	.74	.68	.78	.72	.67	.75	.70	.66	.73	.68	.65	.63
4.0	.73	.65	.59	.72	.64	.58	.70	.63	.57	.67	.61	.57	.65	.60	.56	.54
5.0	.66	.57	.51	.65	.56	.50	.62	.55	.50	.60	.54	.49	.59	.53	.49	.47
6.0	.59	.50	.44	.58	.50	.44	.56	.49	.44	.55	.48	.43	.53	.47	.43	.41
7.0	.54	.45	.39	.53	.45	.39	.51	.44	.39	.50	.43	.38	.49	.43	.38	.36
8.0	.49	.41	.35	.48	.40	.35	.47	.40	.35	.46	.39	.34	.45	.39	.34	.32
9.0	.45	.37	.31	.44	.37	.31	.43	.36	.31	.42	.36	.31	.41	.35	.31	.29
10.0	.41	.34	.28	.41	.33	.28	.40	.33	.28	.39	.33	.28	.38	.32	.28	.26



C Range: 0 - 360DEG
 C Interval: 15.0DEG
 Test Speed: HIGH
 Temperature:25.3°C
 Operators:DAMIN
 Test Date:2024-01-27

γ Range: 0 - 90DEG
 γ Interval: 5.0DEG
 Test System:EVERFINE GO-2000B_V1 SYSTEM V2.00.473
 Humidity:65.0%
 Test Distance:9.401m [K=1.0000]
 Remarks:

WEC AND CCEC

Test:U:220.46V I:0.0430A P:5.4645W PF:0.5762 Freq:50.00Hz								
Lamp Flux:358.26x1 lm								
NAME:			TYPE:			WEIGHT:		
SPEC.:			DIM.:			SERIAL No.:		
MFR.: EVERFINE			SUR.:			Shielding Angle:		

ρ_{CC}	80%			70%			50%			30%			10%			0
ρ_w	50%	30%	10%	50%	30%	10%	50%	30%	10%	50%	30%	10%	50%	30%	10%	0
ρ_{fc}	20%			20%			20%			20%			20%			0
RCR	RCR:Room Cavity Ratio						Wall Exitance Coefficients (WEC)									
0.0																
1.0	.270	.154	.049	.263	.150	.048	.250	.144	.046	.238	.137	.044	.227	.132	.042	
2.0	.264	.145	.044	.258	.142	.044	.247	.137	.043	.236	.132	.041	.226	.128	.040	
3.0	.250	.133	.040	.245	.131	.039	.235	.127	.039	.225	.123	.038	.217	.120	.037	
4.0	.235	.122	.036	.230	.120	.036	.221	.117	.035	.213	.114	.034	.205	.111	.034	
5.0	.219	.112	.032	.215	.110	.032	.207	.108	.032	.200	.105	.031	.193	.103	.031	
6.0	.205	.103	.029	.201	.102	.029	.194	.100	.029	.188	.097	.029	.181	.095	.028	
7.0	.192	.095	.027	.189	.094	.027	.182	.092	.027	.176	.090	.026	.171	.089	.026	
8.0	.180	.088	.025	.177	.087	.025	.172	.086	.024	.166	.084	.024	.161	.083	.024	
9.0	.170	.082	.023	.167	.081	.023	.162	.080	.023	.157	.079	.023	.152	.077	.022	
10.0	.160	.077	.021	.158	.076	.021	.153	.075	.021	.149	.074	.021	.144	.073	.021	

ρ_{CC}	80%			70%			50%			30%			10%			0
ρ_w	50%	30%	10%	50%	30%	10%	50%	30%	10%	50%	30%	10%	50%	30%	10%	0
ρ_{fc}	20%			20%			20%			20%			20%			0
RCR	RCR:Room Cavity Ratio						Ceiling Cavity Exitance Coefficients (CCEC)									
0.0	.190	.190	.190	.163	.163	.163	.111	.111	.111	.064	.064	.064	.020	.020	.020	
1.0	.178	.156	.137	.152	.134	.118	.104	.092	.082	.060	.053	.048	.019	.017	.015	
2.0	.169	.132	.101	.144	.114	.088	.099	.079	.061	.057	.046	.036	.018	.015	.012	
3.0	.161	.114	.077	.138	.098	.067	.095	.068	.047	.055	.040	.028	.018	.013	.009	
4.0	.153	.101	.060	.132	.087	.053	.090	.061	.037	.052	.036	.022	.017	.012	.007	
5.0	.146	.090	.049	.126	.078	.042	.086	.054	.030	.050	.032	.018	.016	.010	.006	
6.0	.139	.082	.040	.120	.071	.035	.083	.050	.025	.048	.029	.015	.015	.010	.005	
7.0	.133	.075	.034	.114	.065	.030	.079	.045	.021	.046	.027	.013	.015	.009	.004	
8.0	.127	.069	.029	.109	.060	.026	.075	.042	.018	.044	.025	.011	.014	.008	.004	
9.0	.121	.064	.026	.104	.056	.022	.072	.039	.016	.042	.023	.009	.014	.008	.003	
10.0	.115	.060	.023	.100	.052	.020	.069	.037	.014	.040	.022	.008	.013	.007	.003	

C Range: 0 - 360DEG
 C Interval: 15.0DEG
 Test Speed: HIGH
 Temperature:25.3°C
 Operators:DAMIN
 Test Date:2024-01-27

γ Range: 0 - 90DEG
 γ Interval: 5.0DEG
 Test System:EVERFINE GO-2000B_V1 SYSTEM V2.00.473
 Humidity:65.0%
 Test Distance:9.401m [K=1.0000]
 Remarks:

UGR(Unified Glare Rating) Table

Test:U:220.46V I:0.0430A P:5.4645W PF:0.5762 Freq:50.00Hz										
Lamp Flux:358.26x1 lm										
NAME:			TYPE:				WEIGHT:			
SPEC.:			DIM.:				SERIAL No.:			
MFR.: EVERFINE			SUR.:				Shielding Angle:			
ceiling/cavity	0.7	0.7	0.5	0.5	0.3	0.7	0.7	0.5	0.5	0.3
walls	0.5	0.3	0.5	0.3	0.3	0.5	0.3	0.5	0.3	0.3
working plane	0.2	0.2	0.2	0.2	0.2	0.2	0.2	0.2	0.2	0.2
Room dimensions	Viewed crosswise					Viewed endwise				
x = 2H y = 2H	17.3	18.7	17.5	18.9	19.1	16.8	18.2	17.0	18.4	18.6
3H	18.2	19.5	18.5	19.8	20.0	17.3	18.7	17.6	18.9	19.1
4H	18.3	19.6	18.6	19.8	20.1	17.3	18.5	17.6	18.8	19.0
6H	18.2	19.4	18.6	19.7	20.0	17.2	18.4	17.5	18.6	18.9
8H	18.2	19.3	18.5	19.6	19.9	17.1	18.3	17.5	18.5	18.8
12H	18.1	19.2	18.5	19.5	19.8	17.1	18.2	17.4	18.5	18.8
4H 2H	17.7	19.0	18.0	19.2	19.5	17.3	18.6	17.6	18.8	19.0
3H	18.7	19.8	19.0	20.1	20.4	17.9	19.0	18.3	19.3	19.6
4H	18.8	19.8	19.2	20.1	20.5	17.9	18.9	18.2	19.2	19.5
6H	18.8	19.6	19.1	20.0	20.3	17.8	18.7	18.2	19.0	19.4
8H	18.7	19.5	19.1	19.9	20.3	17.7	18.5	18.1	18.9	19.3
12H	18.7	19.4	19.1	19.8	20.2	17.7	18.4	18.1	18.8	19.2
8H 4H	18.8	19.6	19.2	19.9	20.3	17.8	18.6	18.2	19.0	19.4
6H	18.7	19.4	19.1	19.8	20.2	17.8	18.4	18.2	18.8	19.2
8H	18.7	19.2	19.1	19.7	20.1	17.7	18.3	18.2	18.7	19.2
12H	18.6	19.1	19.1	19.6	20.0	17.7	18.2	18.2	18.6	19.1
12H 4H	18.7	19.5	19.1	19.8	20.2	17.8	18.5	18.2	18.9	19.3
6H	18.7	19.2	19.1	19.7	20.1	17.7	18.3	18.2	18.7	19.2
8H	18.6	19.1	19.1	19.6	20.0	17.7	18.2	18.2	18.6	19.1
Variations with the observer position at spacings(CIE Pub.117):										
S = 1.0H	+ 0.2 / - 0.2					+ 0.2 / - 0.2				
1.5H	+ 0.5 / - 0.7					+ 0.5 / - 0.5				
2.0H	+ 0.7 / - 0.8					+ 0.7 / - 0.8				

CIE Pub.117, 358.3 lm Total Lamp Luminous Flux Correct (8log(F/F0) = -3.6)
 Area: 0.1 m2

C Range: 0 - 360DEG
 C Interval: 15.0DEG
 Test Speed: HIGH
 Temperature:25.3°C
 Operators:DAMIN
 Test Date:2024-01-27

γ Range: 0 - 90DEG
 γ Interval: 5.0DEG
 Test System:EVERFINE GO-2000B_V1 SYSTEM V2.00.473
 Humidity:65.0%
 Test Distance:9.401m [K=1.0000]
 Remarks:

UTILIZATION FACTORS TABLE

Test:U:220.46V I:0.0430A P:5.4645W PF:0.5762 Freq:50.00Hz Lamp Flux:358.26x1 lm		
NAME:	TYPE:	WEIGHT:
SPEC.:	DIM.:	SERIAL No.:
MFR.: EVERFINE	SUR.:	Shielding Angle:

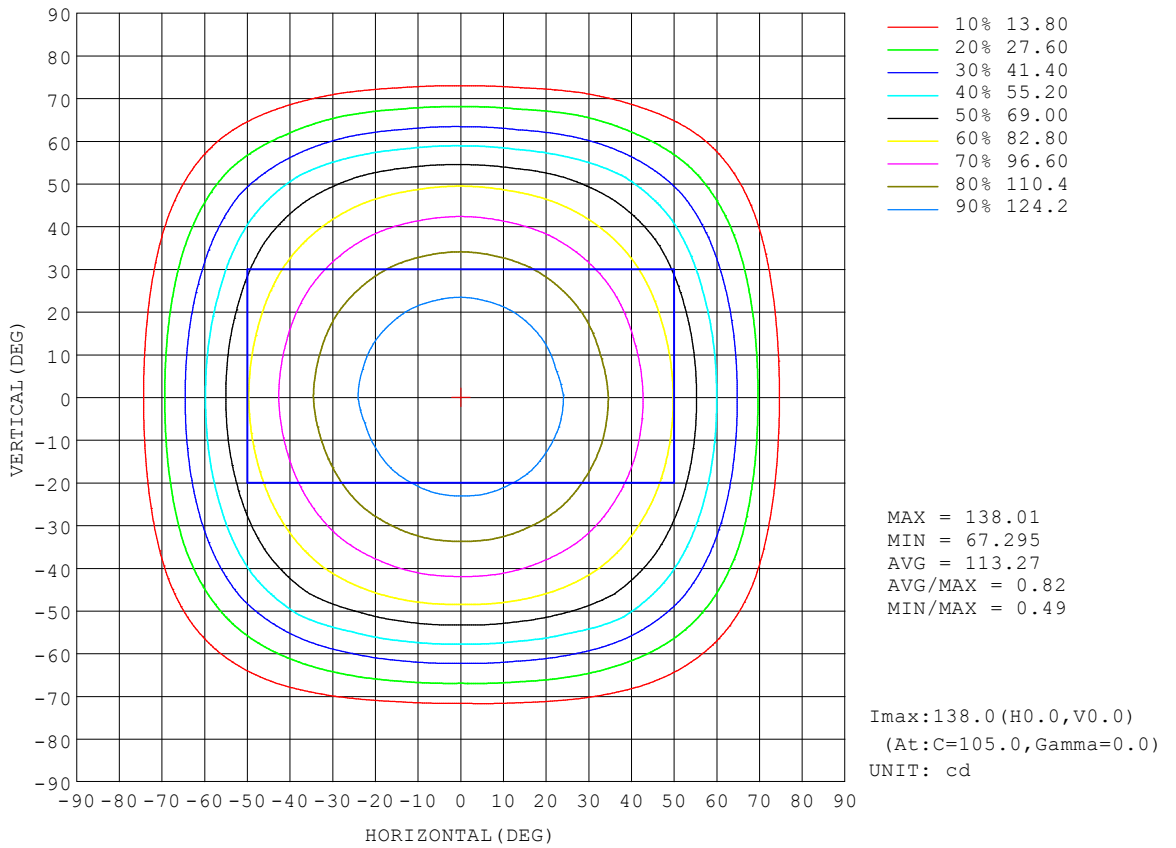
REFLECTANCE										
Ceiling	0.8	0.8	0.8	0.7	0.7	0.7	0.5	0.5	0.5	0
Walls	0.7	0.5	0.3	0.7	0.5	0.3	0.7	0.5	0.3	0
Working plane	0.2	0.2	0.2	0.2	0.2	0.2	0.2	0.2	0.2	0
ROOM INDEX	UTILIZATION FACTORS (PERCENT) $k(RI) \times RCR = 5$									
k = 0.60	59	48	41	59	48	41	58	47	41	35
0.80	70	59	52	69	58	52	67	58	51	45
1.00	79	68	61	78	68	61	75	69	61	54
1.25	86	76	70	85	76	69	82	74	68	62
1.50	91	82	75	89	81	75	86	79	74	67
2.00	98	90	84	96	89	83	93	87	82	74
2.50	101	94	89	99	93	88	96	90	86	78
3.00	104	98	93	102	97	92	98	94	90	82
4.00	108	103	99	106	101	97	102	98	95	86
5.00	110	106	102	108	104	101	103	100	98	89
ROOM INDEX	UF(total)									Direct
According to DIN EN 13032-2 2004			Suspended				SHRNOM = 1.25			

C Range: 0 - 360DEG
 C Interval: 15.0DEG
 Test Speed: HIGH
 Temperature:25.3°C
 Operators:DAMIN
 Test Date:2024-01-27

γ Range: 0 - 90DEG
 γ Interval: 5.0DEG
 Test System:EVERFINE GO-2000B_V1 SYSTEM V2.00.473
 Humidity:65.0%
 Test Distance:9.401m [K=1.0000]
 Remarks:

ISOCANDELA DIAGRAM

Test:U:220.46V I:0.0430A P:5.4645W PF:0.5762 Freq:50.00Hz Lamp Flux:358.26x1 lm		
NAME:	TYPE:	WEIGHT:
SPEC.:	DIM.:	SERIAL No.:
MFR.: EVERFINE	SUR.:	Shielding Angle:

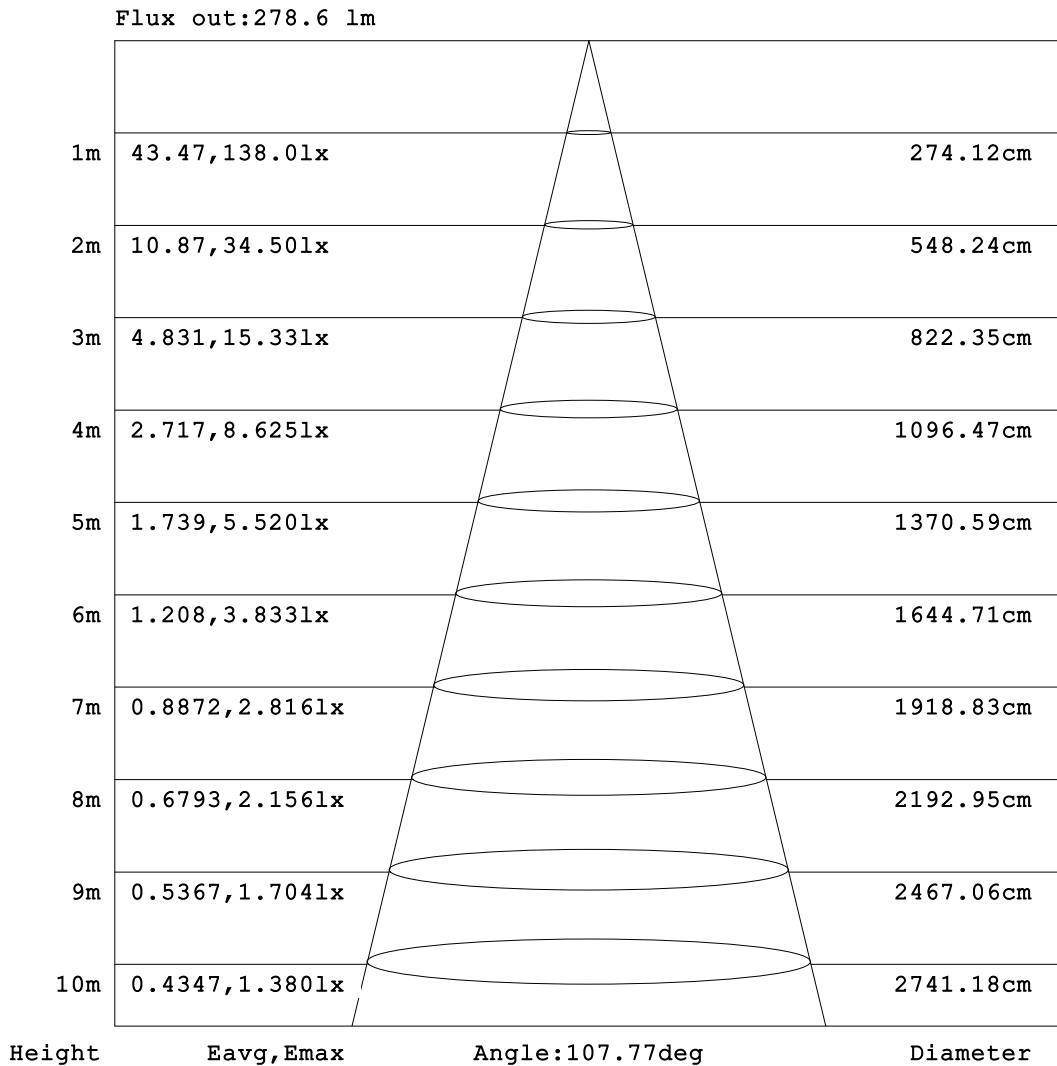


C Range: 0 - 360DEG
 C Interval: 15.0DEG
 Test Speed: HIGH
 Temperature:25.3°C
 Operators:DAMIN
 Test Date:2024-01-27

γ Range: 0 - 90DEG
 γ Interval: 5.0DEG
 Test System:EVERFINE GO-2000B_V1 SYSTEM V2.00.473
 Humidity:65.0%
 Test Distance:9.401m [K=1.0000]
 Remarks:

AAI Figure

Test:U:220.46V I:0.0430A P:5.4645W PF:0.5762 Freq:50.00Hz Lamp Flux:358.26x1 lm		
NAME:	TYPE:	WEIGHT:
SPEC.:	DIM.:	SERIAL No.:
MFR.: EVERFINE	SUR.:	Shielding Angle:



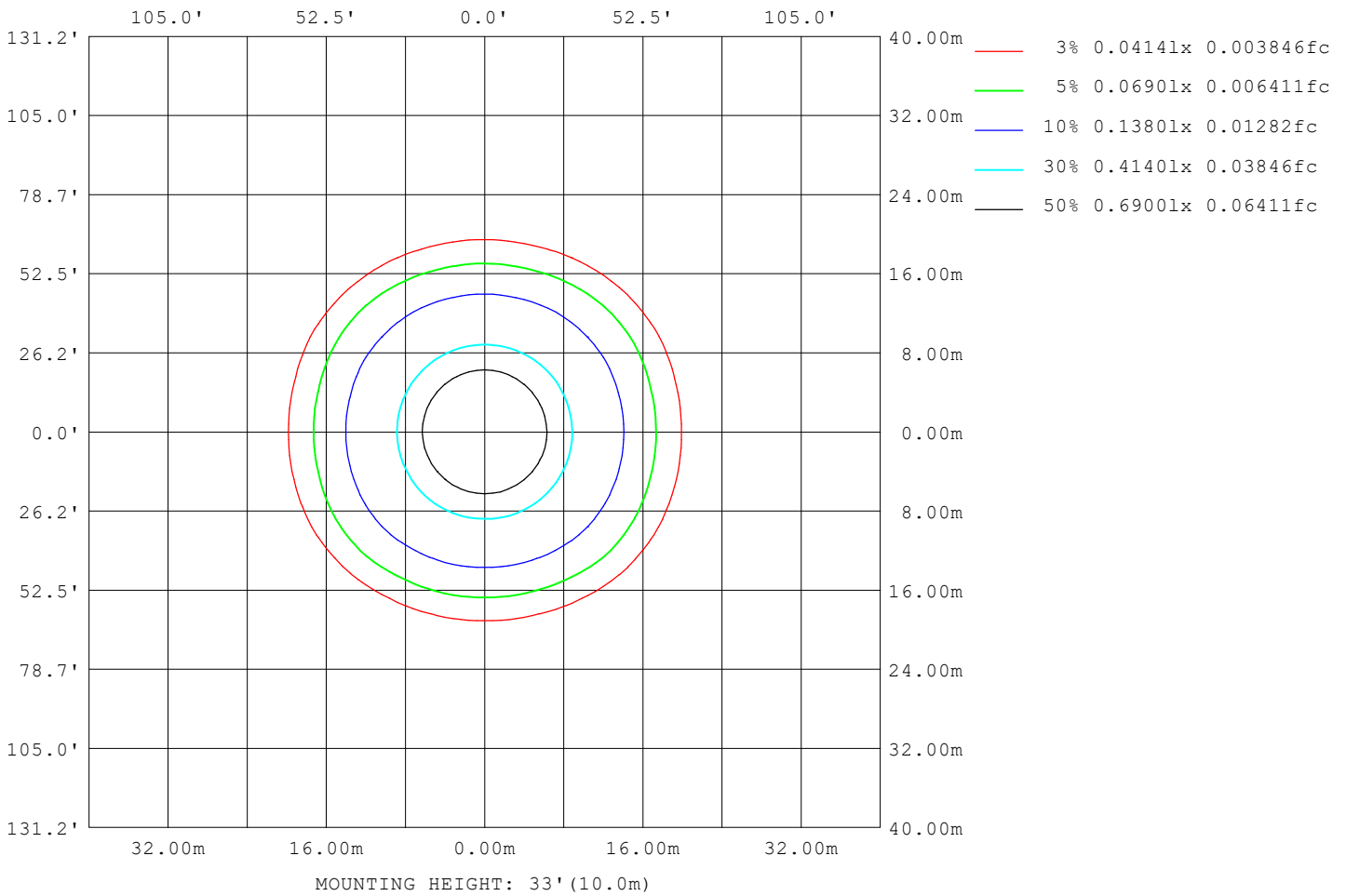
Note:The Curves indicate the illuminated area and the average illumination when the luminaire is at different distance.

C Range: 0 - 360DEG
 C Interval: 15.0DEG
 Test Speed: HIGH
 Temperature:25.3°C
 Operators:DAMIN
 Test Date:2024-01-27

γ Range: 0 - 90DEG
 γ Interval: 5.0DEG
 Test System:EVERFINE GO-2000B_V1 SYSTEM V2.00.473
 Humidity:65.0%
 Test Distance:9.401m [K=1.0000]
 Remarks:

ISOLUX DIAGRAM

Test:U:220.46V I:0.0430A P:5.4645W PF:0.5762 Freq:50.00Hz Lamp Flux:358.26x1 lm		
NAME:	TYPE:	WEIGHT:
SPEC.:	DIM.:	SERIAL No.:
MFR.: EVERFINE	SUR.:	Shielding Angle:



C Range: 0 - 360DEG
 C Interval: 15.0DEG
 Test Speed: HIGH
 Temperature:25.3°C
 Operators:DAMIN
 Test Date:2024-01-27

γ Range: 0 - 90DEG
 γ Interval: 5.0DEG
 Test System:EVERFINE GO-2000B_V1 SYSTEM V2.00.473
 Humidity:65.0%
 Test Distance:9.401m [K=1.0000]
 Remarks:

LED Avg.L Report

Test:U:220.46V I:0.0430A P:5.4645W PF:0.5762 Freq:50.00Hz Lamp Flux:358.26x1 lm		
NAME:	TYPE:	WEIGHT:
SPEC.:	DIM.:	SERIAL No.:
MFR.: EVERFINE	SUR.:	Shielding Angle:

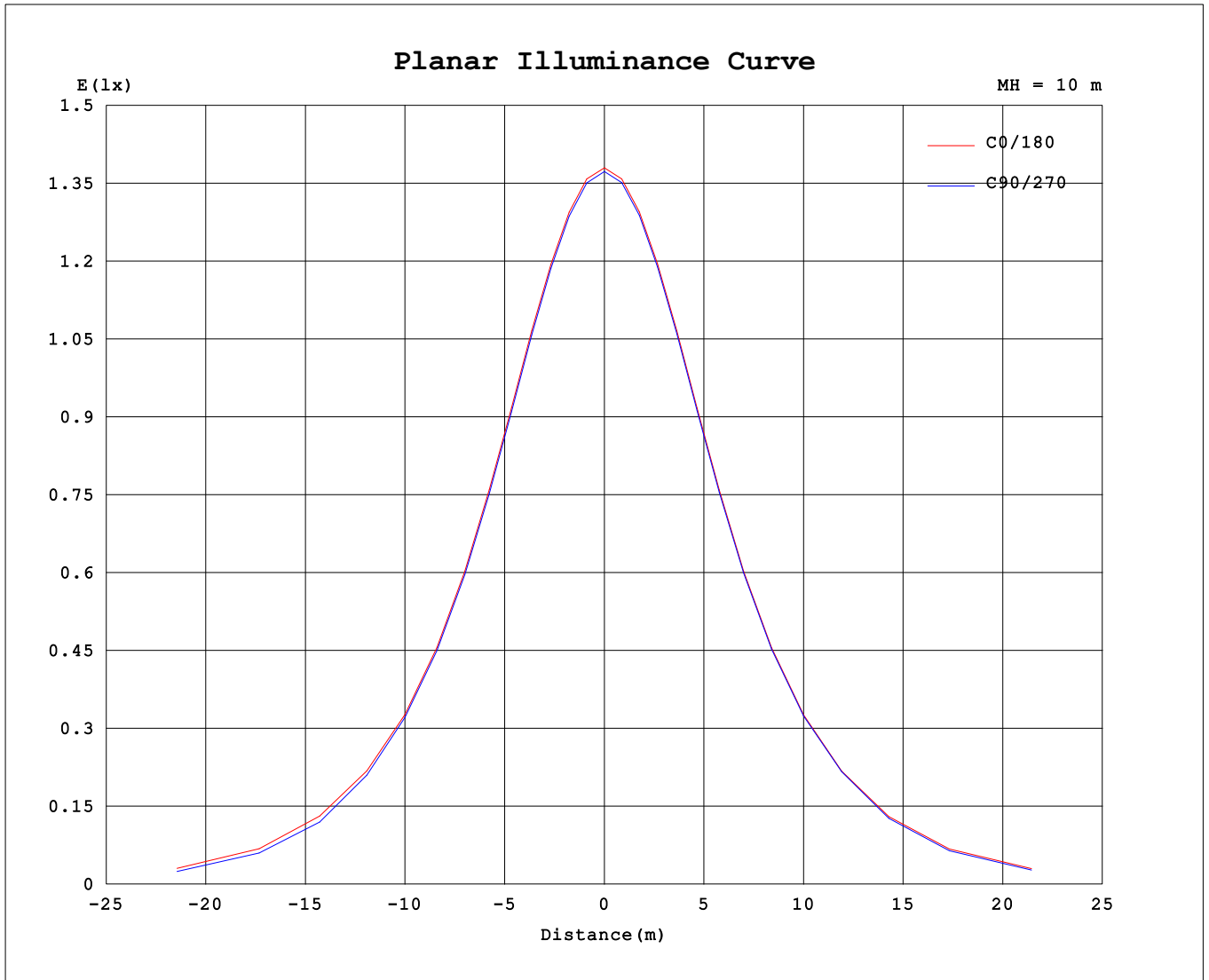
AvgL	cd/m2
L_0~180 (65) av	952
L_0~180 (75) av	478
L_0~180 (85) av	67
L_90~270 (65) av	826
L_90~270 (75) av	224
L_90~270 (85) av	70
L_45 (65) av	942
L_45 (75) av	394
L_45 (85) av	62

Standard: GB/T 29293-2012

C Range: 0 - 360DEG
 C Interval: 15.0DEG
 Test Speed: HIGH
 Temperature:25.3°C
 Operators:DAMIN
 Test Date:2024-01-27

γ Range: 0 - 90DEG
 γ Interval: 5.0DEG
 Test System:EVERFINE GO-2000B_V1 SYSTEM V2.00.473
 Humidity:65.0%
 Test Distance:9.401m [K=1.0000]
 Remarks:

Planar Illuminance Curve



C Range: 0 - 360DEG
 C Interval: 15.0DEG
 Test Speed: HIGH
 Temperature: 25.3°C
 Operators: DAMIN
 Test Date: 2024-01-27

γ Range: 0 - 90DEG
 γ Interval: 5.0DEG
 Test System: EVERFINE GO-2000B_V1 SYSTEM V2.00.473
 Humidity: 65.0%
 Test Distance: 9.401m [K=1.0000]
 Remarks:

