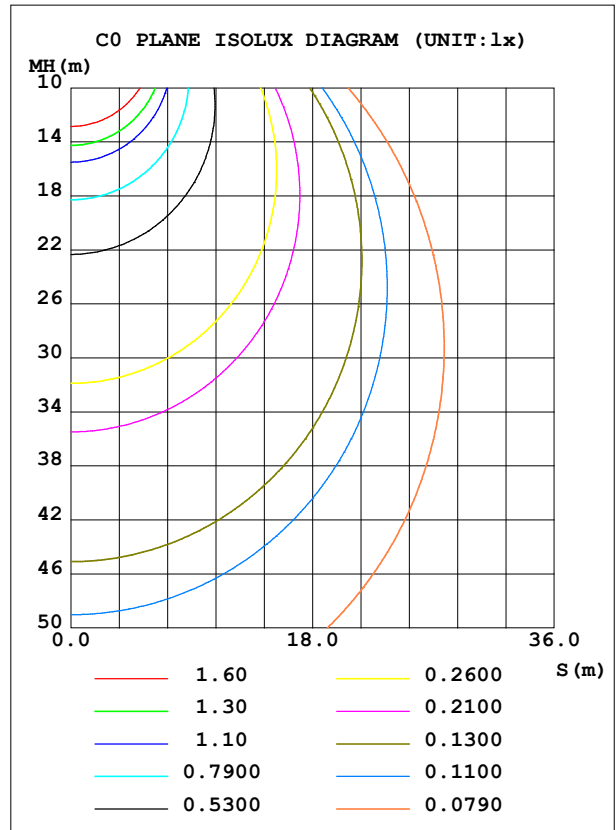
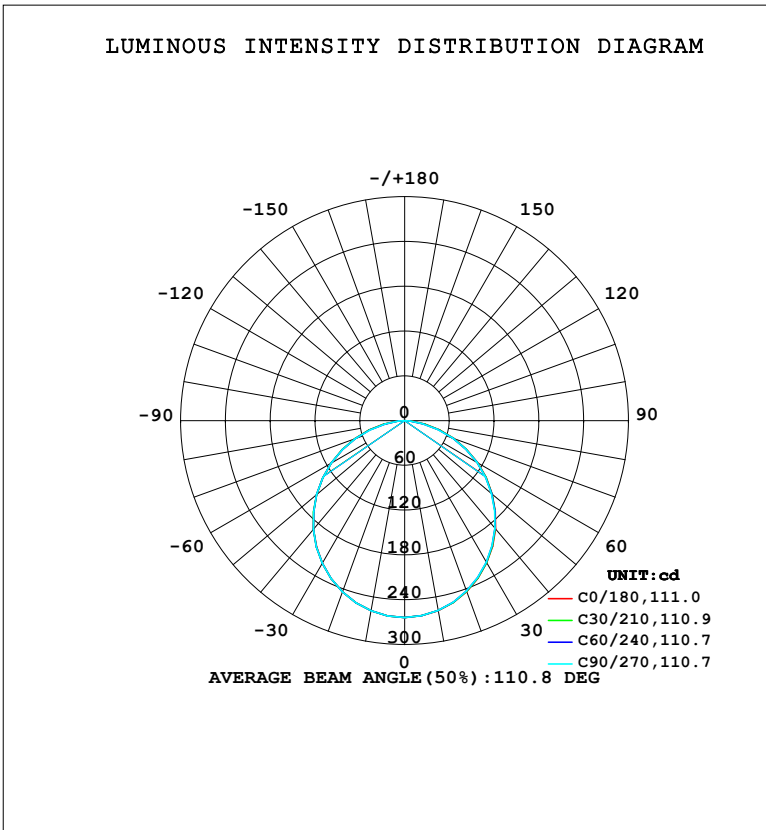


LUMINAIRE PHOTOMETRIC TEST REPORT

Test:U:220.43V I:0.0678A P:8.4397W PF:0.5647 Freq:50.00Hz Lamp Flux:737.925x1 lm		
NAME:	TYPE:	WEIGHT:
SPEC.:	DIM.:	SERIAL No.:
MFR.: EVERFINE	SUR.:	Shielding Angle:

DATA OF LAMP		PHOTOMETRIC DATA				Eff: 87.43 lm/W
MODEL	102BS	I _{max} (cd)	263.7	S/MH (C0/180)	1.24	
NOMINAL POWER (W)	9	LOR (%)	100.0	S/MH (C90/270)	1.24	
RATED VOLTAGE (V)	220	TOTAL FLUX (lm)	737.92	η UP, DN (C0-180)	0.0,49.8	
NOMINAL FLUX (lm)	737.925	CIE CLASS	DIRECT	η UP, DN (C180-360)	0.0,50.2	
LAMPS INSIDE	1	η up (%)	0.0	CIBSE SHR NOM	1.25	
TEST VOLTAGE (V)	219.5	η down (%)	100.0	CIBSE SHR MAX	1.35	



C Range: 0 - 360DEG
 C Interval: 15.0DEG
 Test Speed: HIGH
 Temperature: 25.3°C
 Operators: DAMIN
 Test Date: 2024-01-24

γ Range: 0 - 90DEG
 γ Interval: 5.0DEG
 Test System: EVERFINE GO-2000B_V1 SYSTEM V2.00.473
 Humidity: 65.0%
 Test Distance: 9.401m [K=1.0000]
 Remarks:

ZONAL FLUX DIAGRAM

ZONAL FLUX DIAGRAM:

γ	C0	C45	C90	C135	C180	C225	C270	C315	γ	Φ zone	Φ total	%lum, lamp
10	258.5	258.5	258.2	258.6	258.8	258.8	258.9	258.7	0- 10	24.93	24.93	3.38,3.38
20	243.6	243.4	243.0	243.6	244.1	244.1	244.2	244.0	10- 20	71.19	96.12	13,13
30	220.1	219.8	219.2	220.0	220.7	220.6	220.8	220.5	20- 30	107.3	203.5	27.6,27.6
40	189.4	189.1	188.3	189.3	190.2	189.9	190.2	189.7	30- 40	128.6	332.1	45,45
50	153.3	152.8	152.2	153.1	154.0	153.6	153.9	153.4	40- 50	132.7	464.8	63,63
60	112.9	112.5	112.0	112.8	113.7	113.0	113.4	112.8	50- 60	119.3	584.1	79.2,79.2
70	70.10	69.77	68.58	70.04	70.94	70.19	70.30	69.92	60- 70	90.63	674.7	91.4,91.4
80	28.21	26.47	23.85	26.69	28.85	27.68	26.38	27.51	70- 80	51.03	725.7	98.3,98.3
90	0.4266	0.4274	0.4216	0.4218	0.5107	0.5117	0.5119	0.5121	80- 90	12.19	737.9	100,100
100									90-100			
110									100-110			
120									110-120			
130									120-130			
140									130-140			
150									140-150			
160									150-160			
170									160-170			
180									170-180			
DEG	LUMINOUS INTENSITY:cd									UNIT:lm		

Conical surface Flux(90deg): 399.03 lm

%lum = 54.1%

%lamp = 54.1%

Conical surface Flux(130deg): 633.79 lm

%lum = 85.9%

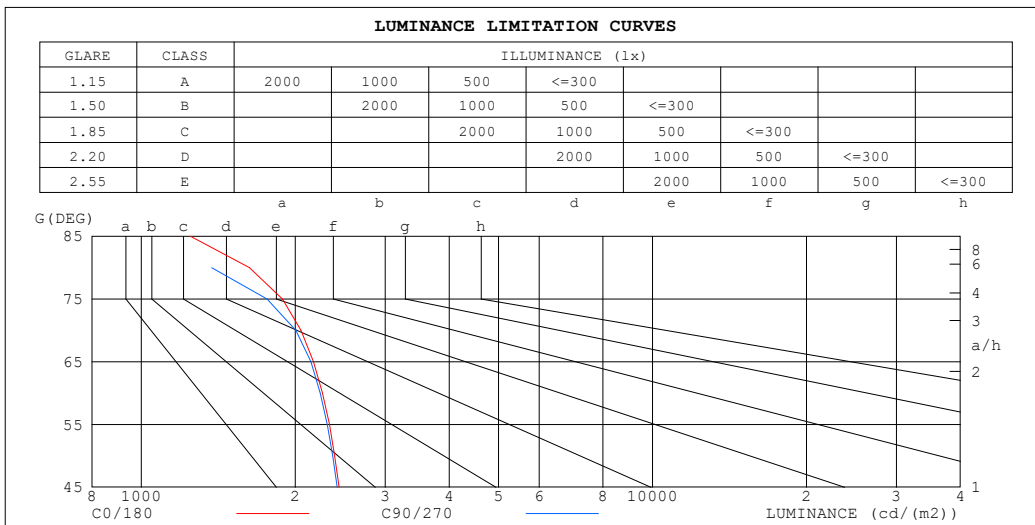
%lamp = 85.9%

C Range: 0 - 360DEG
 C Interval: 15.0DEG
 Test Speed: HIGH
 Temperature:25.3°C
 Operators:DAMIN
 Test Date:2024-01-24

γ Range: 0 - 90DEG
 γ Interval: 5.0DEG
 Test System:EVERFINE GO-2000B_V1 SYSTEM V2.00.473
 Humidity:65.0%
 Test Distance:9.401m [K=1.0000]
 Remarks:

LUMINANCE LIMITATION CURVES

Test:U:220.43V I:0.0678A P:8.4397W PF:0.5647 Freq:50.00Hz Lamp Flux:737.925x1 lm		
NAME:	TYPE:	WEIGHT:
SPEC.:	DIM.:	SERIAL No.:
MFR.: EVERFINE	SUR.:	Shielding Angle:



LUMINANCE cd/(m2)		
G (DEG)	C0/180	C90/270
85	1247	742
80	1628	1373
75	1888	1761
70	2054	2005
65	2171	2146
60	2262	2239
55	2332	2309
50	2390	2367
45	2437	2415

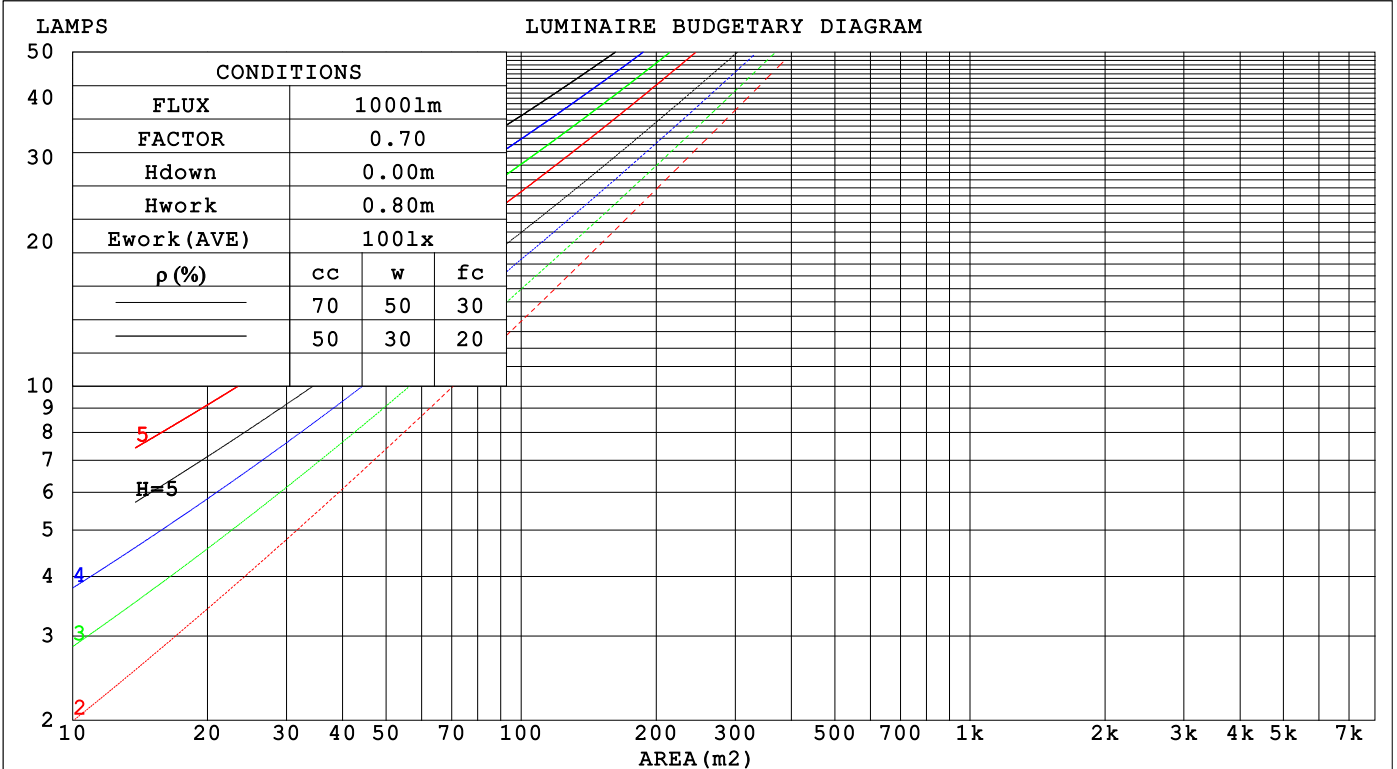
C Range: 0 - 360DEG
 C Interval: 15.0DEG
 Test Speed: HIGH
 Temperature:25.3°C
 Operators:DAMIN
 Test Date:2024-01-24

γ Range: 0 - 90DEG
 γ Interval: 5.0DEG
 Test System:EVERFINE GO-2000B_V1 SYSTEM V2.00.473
 Humidity:65.0%
 Test Distance:9.401m [K=1.0000]
 Remarks:

CU AND LUMINAIRE BUDGETARY ESTIMATE DIAGRAM

Test:U:220.43V I:0.0678A P:8.4397W PF:0.5647 Freq:50.00Hz Lamp Flux:737.925x1 lm		
NAME:	TYPE:	WEIGHT:
SPEC.:	DIM.:	SERIAL No.:
MFR.: EVERFINE	SUR.:	Shielding Angle:

ρ_{cc}	80%			70%			50%			30%			10%			0
ρ_w	50%	30%	10%	50%	30%	10%	50%	30%	10%	50%	30%	10%	50%	30%	10%	0
ρ_{fc}	20%			20%			20%			20%			20%			0
RCR	RCR:Room Cavity Ratio Coefficients of Utilization(CU)															
0.0	1.19	1.19	1.19	1.16	1.16	1.16	1.11	1.11	1.11	1.06	1.06	1.06	1.02	1.02	1.02	1.00
1.0	1.04	.00	.96	1.02	.98	.94	.98	.94	.91	.94	.91	.89	.90	.88	.86	.84
2.0	.91	.84	.78	.89	.82	.77	.85	.80	.75	.82	.77	.74	.79	.75	.72	.70
3.0	.80	.71	.65	.78	.70	.64	.75	.68	.63	.72	.67	.62	.70	.65	.61	.59
4.0	.70	.62	.55	.69	.61	.55	.67	.59	.54	.64	.58	.53	.62	.57	.52	.50
5.0	.63	.54	.47	.62	.53	.47	.60	.52	.46	.58	.51	.46	.56	.50	.45	.43
6.0	.57	.48	.41	.56	.47	.41	.54	.46	.41	.52	.45	.40	.51	.45	.40	.38
7.0	.51	.43	.36	.51	.42	.36	.49	.41	.36	.48	.41	.36	.46	.40	.35	.33
8.0	.47	.38	.32	.46	.38	.32	.45	.37	.32	.44	.37	.32	.42	.36	.32	.30
9.0	.43	.35	.29	.42	.35	.29	.41	.34	.29	.40	.34	.29	.39	.33	.29	.27
10.0	.40	.32	.26	.39	.32	.26	.38	.31	.26	.37	.31	.26	.36	.30	.26	.24



C Range: 0 - 360DEG
 C Interval: 15.0DEG
 Test Speed: HIGH
 Temperature:25.3°C
 Operators:DAMIN
 Test Date:2024-01-24

γ Range: 0 - 90DEG
 γ Interval: 5.0DEG
 Test System:EVERFINE GO-2000B_V1 SYSTEM V2.00.473
 Humidity:65.0%
 Test Distance:9.401m [K=1.0000]
 Remarks:

WEC AND CCEC

Test:U:220.43V I:0.0678A P:8.4397W PF:0.5647 Freq:50.00Hz								
Lamp Flux:737.925x1 lm								
NAME:			TYPE:			WEIGHT:		
SPEC.:			DIM.:			SERIAL No.:		
MFR.: EVERFINE			SUR.:			Shielding Angle:		

ρ _{CC}	80%			70%			50%			30%			10%			0
ρ _w	50%	30%	10%	50%	30%	10%	50%	30%	10%	50%	30%	10%	50%	30%	10%	0
ρ _{fc}	20%			20%			20%			20%			20%			0
RCR	RCR:Room Cavity Ratio						Wall Exitance Coefficients (WEC)									
0.0																
1.0	.307	.174	.055	.300	.171	.054	.286	.164	.052	.274	.158	.051	.263	.152	.049	
2.0	.290	.159	.049	.284	.156	.048	.272	.151	.047	.261	.146	.046	.251	.142	.045	
3.0	.269	.143	.043	.263	.141	.042	.253	.137	.042	.243	.133	.041	.234	.130	.040	
4.0	.248	.129	.038	.243	.127	.038	.234	.124	.037	.226	.121	.037	.218	.118	.036	
5.0	.230	.117	.034	.225	.116	.034	.217	.113	.033	.210	.111	.033	.202	.108	.033	
6.0	.213	.107	.031	.209	.106	.030	.202	.103	.030	.195	.101	.030	.189	.099	.030	
7.0	.198	.098	.028	.195	.097	.028	.188	.095	.027	.182	.093	.027	.177	.092	.027	
8.0	.185	.091	.025	.182	.090	.025	.176	.088	.025	.171	.087	.025	.166	.085	.025	
9.0	.174	.084	.023	.171	.083	.023	.166	.082	.023	.161	.081	.023	.156	.079	.023	
10.0	.163	.078	.022	.161	.078	.022	.156	.076	.022	.152	.075	.021	.148	.074	.021	

ρ _{CC}	80%			70%			50%			30%			10%			0
ρ _w	50%	30%	10%	50%	30%	10%	50%	30%	10%	50%	30%	10%	50%	30%	10%	0
ρ _{fc}	20%			20%			20%			20%			20%			0
RCR	RCR:Room Cavity Ratio						Ceiling Cavity Exitance Coefficients (CCEC)									
0.0	.190	.190	.190	.163	.163	.163	.111	.111	.111	.064	.064	.064	.020	.020	.020	
1.0	.180	.156	.135	.154	.134	.116	.105	.092	.080	.061	.053	.047	.019	.017	.015	
2.0	.172	.132	.098	.147	.114	.085	.101	.079	.059	.058	.046	.035	.019	.015	.011	
3.0	.164	.114	.074	.141	.099	.065	.097	.068	.045	.056	.040	.027	.018	.013	.009	
4.0	.157	.101	.058	.134	.087	.051	.092	.061	.036	.053	.036	.021	.017	.012	.007	
5.0	.149	.091	.047	.128	.078	.041	.088	.055	.029	.051	.032	.017	.016	.010	.006	
6.0	.142	.082	.039	.122	.071	.034	.084	.050	.024	.049	.029	.014	.016	.010	.005	
7.0	.135	.075	.033	.116	.065	.029	.080	.046	.021	.047	.027	.012	.015	.009	.004	
8.0	.129	.069	.029	.111	.060	.025	.077	.042	.018	.045	.025	.011	.014	.008	.004	
9.0	.123	.065	.025	.106	.056	.022	.073	.039	.016	.043	.023	.009	.014	.008	.003	
10.0	.117	.060	.022	.101	.052	.020	.070	.037	.014	.041	.022	.008	.013	.007	.003	

C Range: 0 - 360DEG
 C Interval: 15.0DEG
 Test Speed: HIGH
 Temperature:25.3°C
 Operators:DAMIN
 Test Date:2024-01-24

γ Range: 0 - 90DEG
 γ Interval: 5.0DEG
 Test System:EVERFINE GO-2000B_V1 SYSTEM V2.00.473
 Humidity:65.0%
 Test Distance:9.401m [K=1.0000]
 Remarks:

UGR(Unified Glare Rating) Table

Test:U:220.43V I:0.0678A P:8.4397W PF:0.5647 Freq:50.00Hz										
Lamp Flux:737.925x1 lm										
NAME:			TYPE:			WEIGHT:				
SPEC.:			DIM.:			SERIAL No.:				
MFR.: EVERFINE			SUR.:			Shielding Angle:				
ceiling/cavity	0.7	0.7	0.5	0.5	0.3	0.7	0.7	0.5	0.5	0.3
walls	0.5	0.3	0.5	0.3	0.3	0.5	0.3	0.5	0.3	0.3
working plane	0.2	0.2	0.2	0.2	0.2	0.2	0.2	0.2	0.2	0.2
Room dimensions	Viewed crosswise					Viewed endwise				
x = 2H y = 2H	16.9	18.4	17.1	18.6	18.8	16.8	18.4	17.1	18.6	18.8
3H	18.4	19.8	18.7	20.0	20.2	18.3	19.7	18.6	20.0	20.2
4H	19.0	20.3	19.3	20.5	20.8	18.8	20.2	19.1	20.4	20.7
6H	19.3	20.6	19.7	20.8	21.1	19.1	20.4	19.4	20.6	20.9
8H	19.4	20.6	19.7	20.9	21.2	19.1	20.3	19.4	20.6	20.9
12H	19.4	20.6	19.8	20.9	21.2	19.1	20.2	19.4	20.5	20.8
4H 2H	17.5	18.8	17.8	19.1	19.3	17.4	18.8	17.8	19.0	19.3
3H	19.2	20.3	19.5	20.6	20.9	19.1	20.3	19.5	20.6	20.9
4H	19.9	20.9	20.2	21.2	21.6	19.7	20.8	20.1	21.1	21.4
6H	20.3	21.3	20.7	21.6	22.0	20.1	21.0	20.5	21.4	21.7
8H	20.4	21.3	20.8	21.7	22.0	20.1	21.0	20.5	21.3	21.7
12H	20.5	21.3	20.9	21.7	22.1	20.1	20.9	20.5	21.3	21.7
8H 4H	20.1	21.0	20.5	21.3	21.7	20.0	20.8	20.4	21.2	21.6
6H	20.6	21.4	21.1	21.8	22.2	20.4	21.1	20.8	21.5	21.9
8H	20.8	21.4	21.2	21.8	22.3	20.4	21.1	20.9	21.5	22.0
12H	20.9	21.4	21.4	21.9	22.4	20.5	21.0	20.9	21.5	21.9
12H 4H	20.1	20.9	20.5	21.3	21.7	19.9	20.8	20.4	21.1	21.6
6H	20.6	21.3	21.1	21.7	22.2	20.4	21.0	20.9	21.5	21.9
8H	20.8	21.4	21.3	21.8	22.3	20.5	21.0	20.9	21.5	21.9
Variations with the observer position at spacings(CIE Pub.117):										
S = 1.0H	+ 0.1 / - 0.2					+ 0.1 / - 0.2				
1.5H	+ 0.2 / - 0.3					+ 0.2 / - 0.3				
2.0H	+ 0.2 / - 0.4					+ 0.3 / - 0.4				

CIE Pub.117, 737.9 lm Total Lamp Luminous Flux Correct (8log(F/F0) = -1.1)
 Area: 0.1 m2

C Range: 0 - 360DEG
 C Interval: 15.0DEG
 Test Speed: HIGH
 Temperature:25.3°C
 Operators:DAMIN
 Test Date:2024-01-24

γ Range: 0 - 90DEG
 γ Interval: 5.0DEG
 Test System:EVERFINE GO-2000B_V1 SYSTEM V2.00.473
 Humidity:65.0%
 Test Distance:9.401m [K=1.0000]
 Remarks:

UTILIZATION FACTORS TABLE

Test:U:220.43V I:0.0678A P:8.4397W PF:0.5647 Freq:50.00Hz Lamp Flux:737.925x1 lm		
NAME:	TYPE:	WEIGHT:
SPEC.:	DIM.:	SERIAL No.:
MFR.: EVERFINE	SUR.:	Shielding Angle:

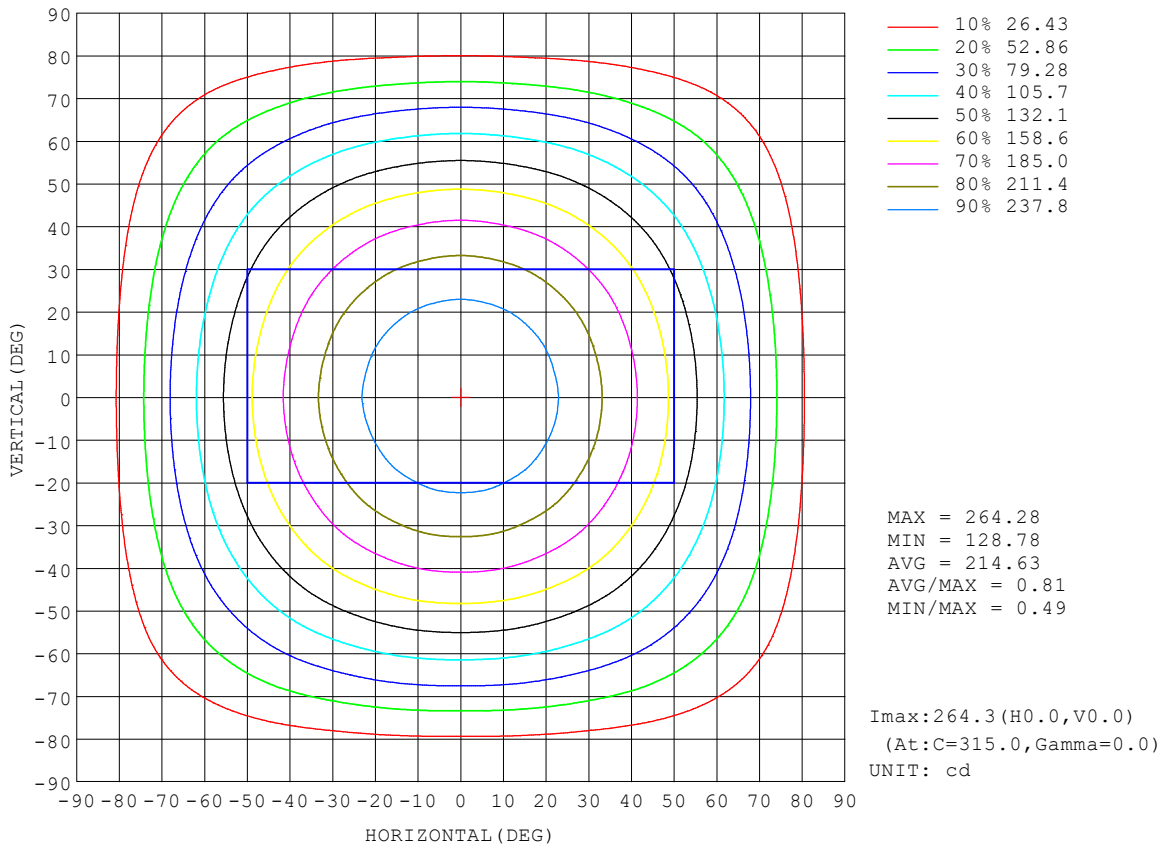
REFLECTANCE										
Ceiling	0.8	0.8	0.8	0.7	0.7	0.7	0.5	0.5	0.5	0
Walls	0.7	0.5	0.3	0.7	0.5	0.3	0.7	0.5	0.3	0
Working plane	0.2	0.2	0.2	0.2	0.2	0.2	0.2	0.2	0.2	0
ROOM INDEX	UTILIZATION FACTORS (PERCENT) $k(RI) \times RCR = 5$									
k = 0.60	58	46	39	57	46	39	56	45	39	32
0.80	68	56	49	67	56	49	65	55	48	41
1.00	76	65	58	75	65	58	73	66	57	50
1.25	83	73	66	82	72	65	79	71	65	57
1.50	88	78	71	87	78	71	84	76	70	62
2.00	95	87	80	93	85	79	90	83	78	70
2.50	99	91	85	97	90	84	93	87	83	74
3.00	102	96	90	100	94	89	96	91	87	78
4.00	106	101	96	104	99	95	100	96	92	83
5.00	109	104	100	106	102	98	102	98	95	86
ROOM INDEX	UF(total)									Direct
According to DIN EN 13032-2 2004			Suspended				SHRNOM = 1.25			

C Range: 0 - 360DEG
 C Interval: 15.0DEG
 Test Speed: HIGH
 Temperature:25.3°C
 Operators:DAMIN
 Test Date:2024-01-24

γ Range: 0 - 90DEG
 γ Interval: 5.0DEG
 Test System:EVERFINE GO-2000B_V1 SYSTEM V2.00.473
 Humidity:65.0%
 Test Distance:9.401m [K=1.0000]
 Remarks:

ISOCANDELA DIAGRAM

Test:U:220.43V I:0.0678A P:8.4397W PF:0.5647 Freq:50.00Hz Lamp Flux:737.925x1 lm		
NAME:	TYPE:	WEIGHT:
SPEC.:	DIM.:	SERIAL No.:
MFR.: EVERFINE	SUR.:	Shielding Angle:

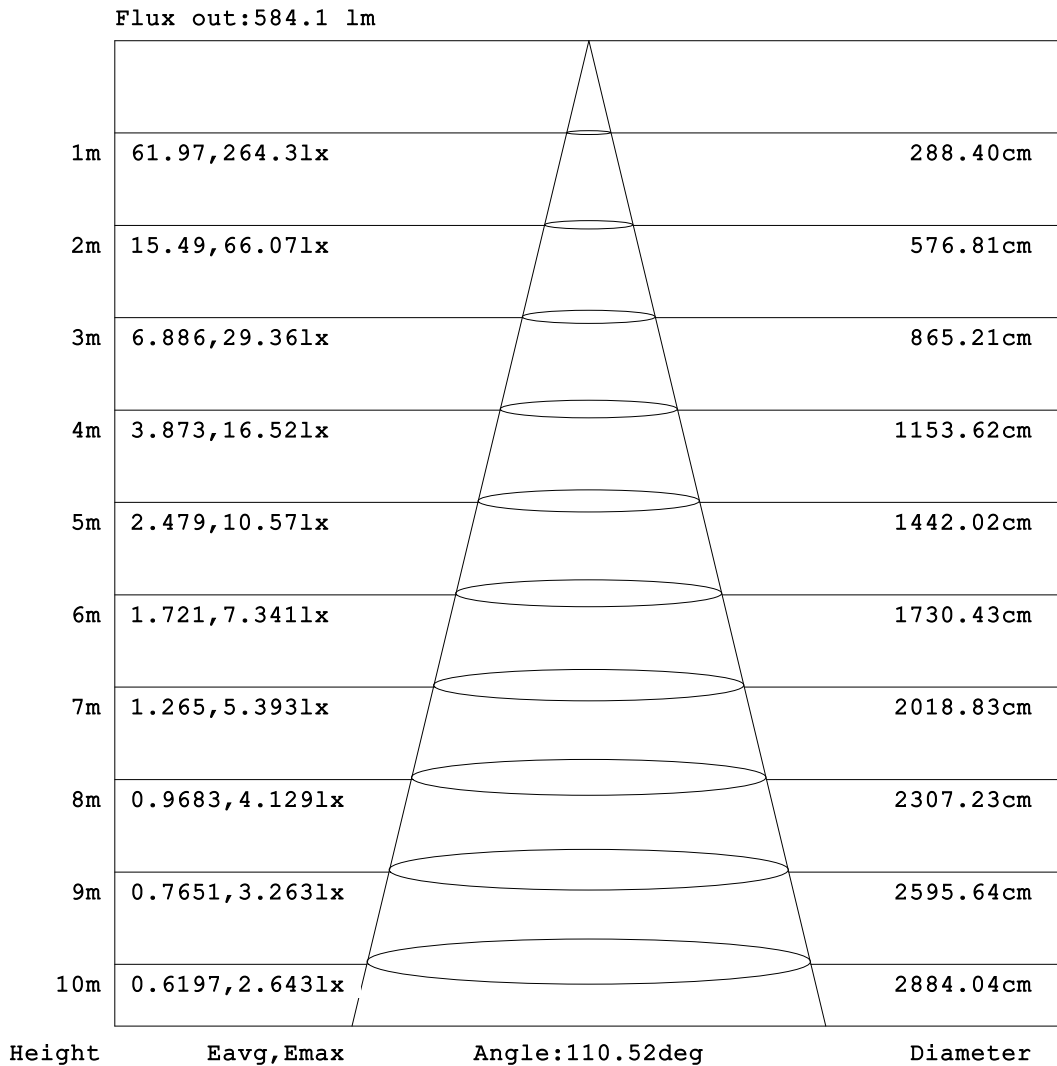


C Range: 0 - 360DEG
 C Interval: 15.0DEG
 Test Speed: HIGH
 Temperature:25.3°C
 Operators:DAMIN
 Test Date:2024-01-24

γ Range: 0 - 90DEG
 γ Interval: 5.0DEG
 Test System:EVERFINE GO-2000B_V1 SYSTEM V2.00.473
 Humidity:65.0%
 Test Distance:9.401m [K=1.0000]
 Remarks:

AAI Figure

Test:U:220.43V I:0.0678A P:8.4397W PF:0.5647 Freq:50.00Hz Lamp Flux:737.925x1 lm		
NAME:	TYPE:	WEIGHT:
SPEC.:	DIM.:	SERIAL No.:
MFR.: EVERFINE	SUR.:	Shielding Angle:



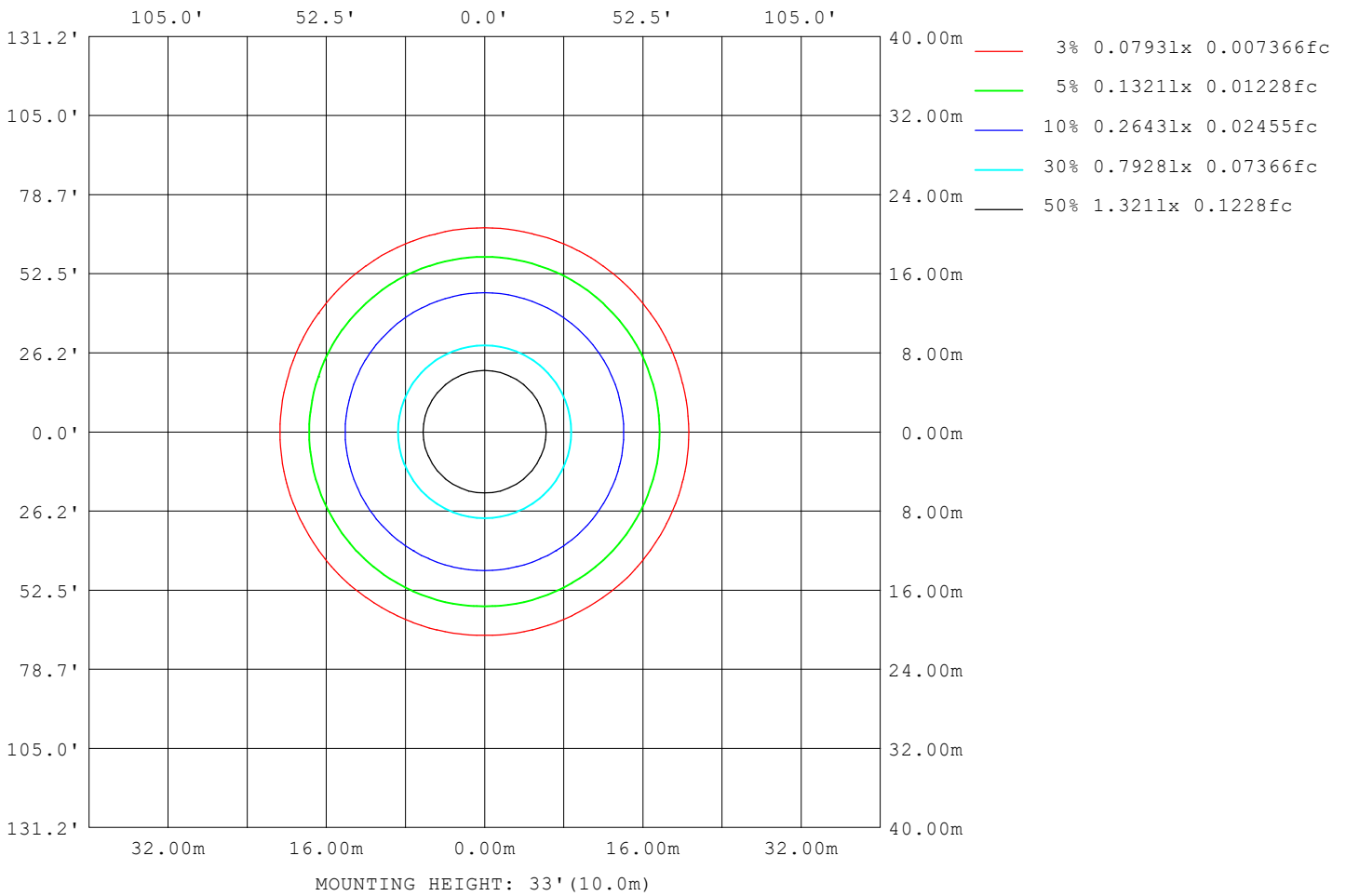
Note: The Curves indicate the illuminated area and the average illumination when the luminaire is at different distance.

C Range: 0 - 360DEG
 C Interval: 15.0DEG
 Test Speed: HIGH
 Temperature: 25.3°C
 Operators: DAMIN
 Test Date: 2024-01-24

γ Range: 0 - 90DEG
 γ Interval: 5.0DEG
 Test System: EVERFINE GO-2000B_V1 SYSTEM V2.00.473
 Humidity: 65.0%
 Test Distance: 9.401m [K=1.0000]
 Remarks:

ISOLUX DIAGRAM

Test:U:220.43V I:0.0678A P:8.4397W PF:0.5647 Freq:50.00Hz Lamp Flux:737.925x1 lm		
NAME:	TYPE:	WEIGHT:
SPEC.:	DIM.:	SERIAL No.:
MFR.: EVERFINE	SUR.:	Shielding Angle:



C Range: 0 - 360DEG
 C Interval: 15.0DEG
 Test Speed: HIGH
 Temperature:25.3°C
 Operators:DAMIN
 Test Date:2024-01-24

γ Range: 0 - 90DEG
 γ Interval: 5.0DEG
 Test System:EVERFINE GO-2000B_V1 SYSTEM V2.00.473
 Humidity:65.0%
 Test Distance:9.401m [K=1.0000]
 Remarks:

LED Avg.L Report

Test:U:220.43V I:0.0678A P:8.4397W PF:0.5647 Freq:50.00Hz Lamp Flux:737.925x1 lm		
NAME:	TYPE:	WEIGHT:
SPEC.:	DIM.:	SERIAL No.:
MFR.: EVERFINE	SUR.:	Shielding Angle:

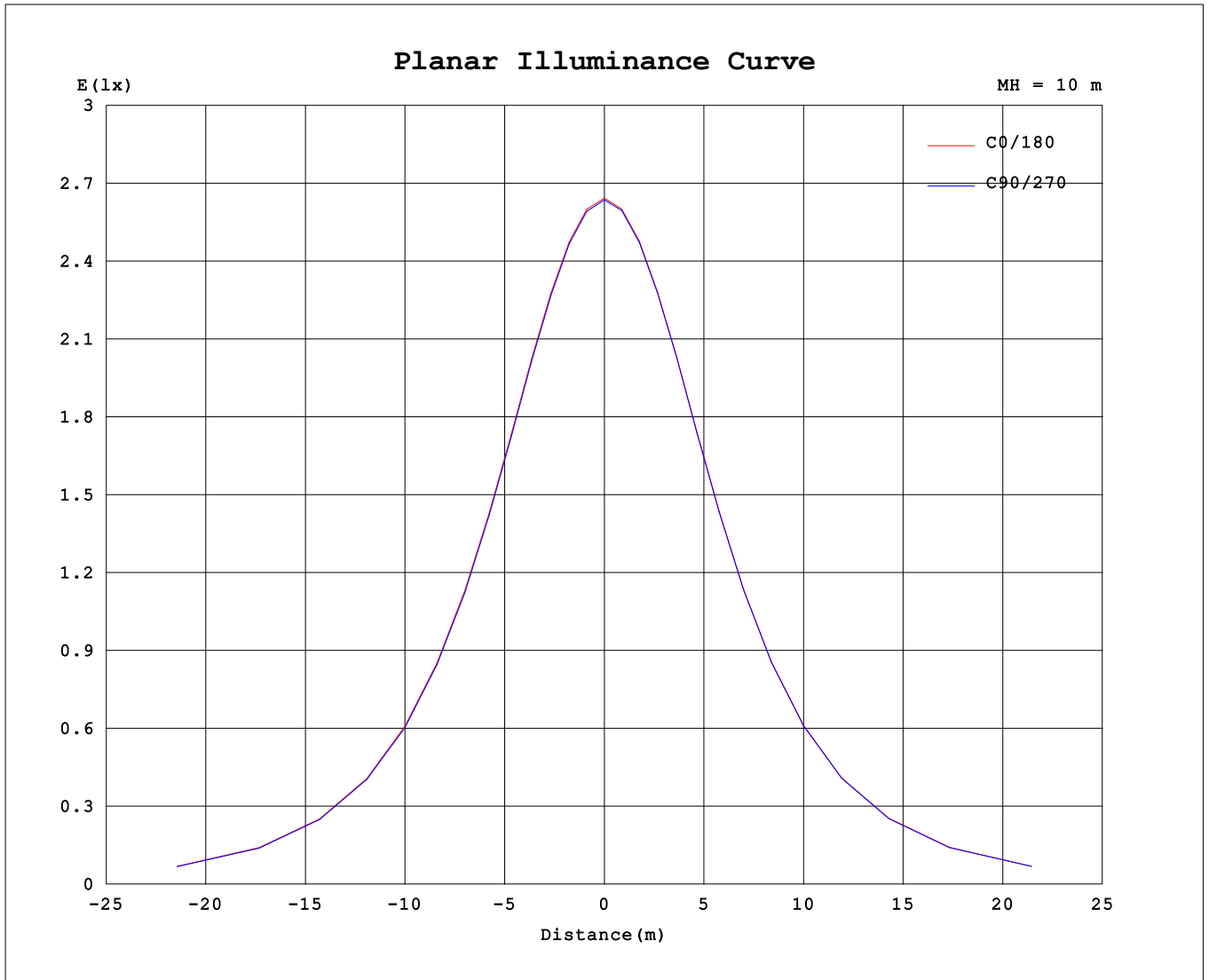
AvgL	cd/m2
L_0~180 (65) av	2177
L_0~180 (75) av	1900
L_0~180 (85) av	1272
L_90~270 (65) av	2162
L_90~270 (75) av	1810
L_90~270 (85) av	836
L_45 (65) av	2166
L_45 (75) av	1872
L_45 (85) av	960

Standard: GB/T 29293-2012

C Range: 0 - 360DEG
 C Interval: 15.0DEG
 Test Speed: HIGH
 Temperature:25.3°C
 Operators:DAMIN
 Test Date:2024-01-24

γ Range: 0 - 90DEG
 γ Interval: 5.0DEG
 Test System:EVERFINE GO-2000B_V1 SYSTEM V2.00.473
 Humidity:65.0%
 Test Distance:9.401m [K=1.0000]
 Remarks:

Planar Illuminance Curve



C Range: 0 - 360DEG
 C Interval: 15.0DEG
 Test Speed: HIGH
 Temperature: 25.3°C
 Operators: DAMIN
 Test Date: 2024-01-24

γ Range: 0 - 90DEG
 γ Interval: 5.0DEG
 Test System: EVERFINE GO-2000B_V1 SYSTEM V2.00.473
 Humidity: 65.0%
 Test Distance: 9.401m [K=1.0000]
 Remarks:

