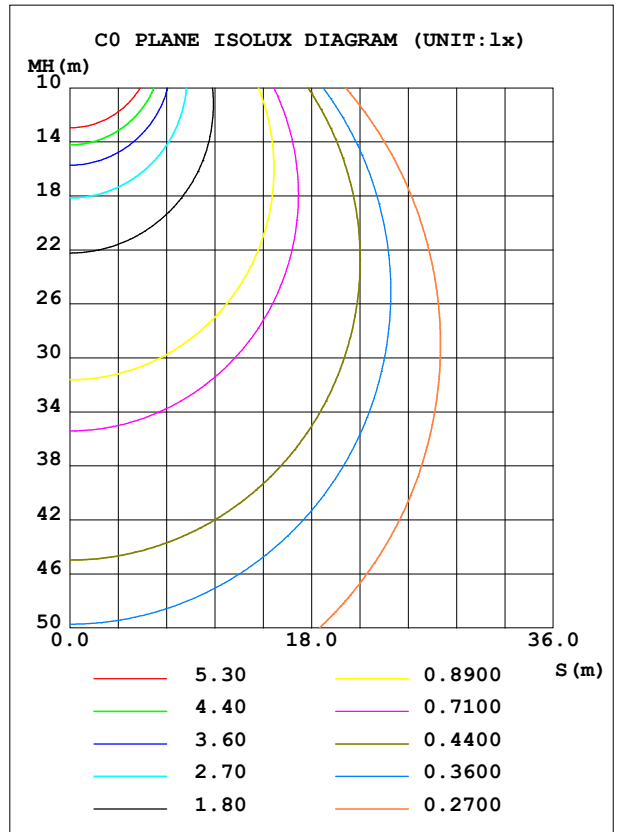
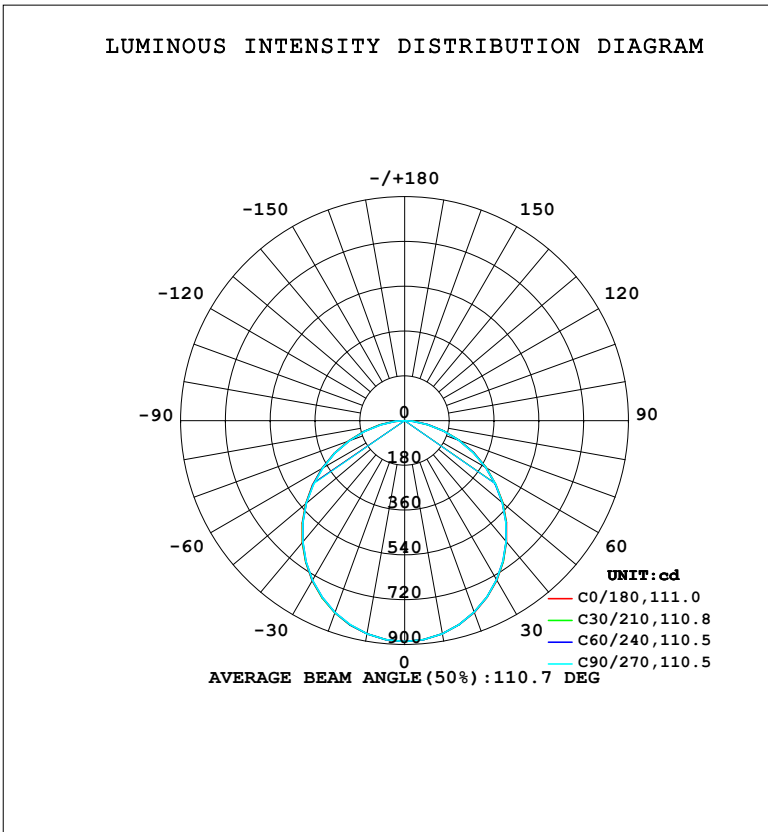


LUMINAIRE PHOTOMETRIC TEST REPORT

Test:U:220.44V I:0.1146A P:23.484W PF:0.9298 Freq:50.00Hz Lamp Flux:2494.15x1 lm		
NAME:	TYPE:	WEIGHT:
SPEC.:	DIM.:	SERIAL No.:
MFR.: EVERFINE	SUR.:	Shielding Angle:

DATA OF LAMP		PHOTOMETRIC DATA				Eff: 106.20 lm/W
MODEL	102BR	I <sub>max</sub> (cd)	887.4	S/MH (C0/180)	1.25	
NOMINAL POWER (W)	24	LOR (%)	100.0	S/MH (C90/270)	1.24	
RATED VOLTAGE (V)	220	TOTAL FLUX (lm)	2494.2	η UP, DN (C0-180)	0.0, 49.9	
NOMINAL FLUX (lm)	2494.15	CIE CLASS	DIRECT	η UP, DN (C180-360)	0.0, 50.1	
LAMPS INSIDE	1	η up (%)	0.0	CIBSE SHR NOM	1.25	
TEST VOLTAGE (V)	219.5	η down (%)	100.0	CIBSE SHR MAX	1.35	



C Range: 0 - 360DEG  
 C Interval: 15.0DEG  
 Test Speed: HIGH  
 Temperature: 25.3°C  
 Operators: DAMIN  
 Test Date: 2024-01-25

γ Range: 0 - 90DEG  
 γ Interval: 5.0DEG  
 Test System: EVERFINE GO-2000B\_V1 SYSTEM V2.00.473  
 Humidity: 65.0%  
 Test Distance: 9.401m [K=1.0000]  
 Remarks:

ZONAL FLUX DIAGRAM

ZONAL FLUX DIAGRAM:

$\gamma$	C0	C45	C90	C135	C180	C225	C270	C315	$\gamma$	$\Phi$ zone	$\Phi$ total	%lum,lamp
10	869.9	870.0	869.6	870.4	870.6	870.0	870.2	869.8	0- 10	83.88	83.88	3.36,3.36
20	819.8	819.6	818.9	820.8	821.6	820.0	820.3	819.9	10- 20	239.5	323.4	13,13
30	741.0	740.3	739.1	742.4	743.3	740.7	740.8	741.0	20- 30	361.2	684.7	27.5,27.5
40	637.6	636.5	635.0	639.4	640.8	637.1	637.3	637.7	30- 40	433.0	1118	44.8,44.8
50	515.4	514.1	512.6	517.6	519.1	515.2	515.3	515.5	40- 50	446.4	1564	62.7,62.7
60	379.0	378.1	376.3	381.8	383.3	378.9	379.5	379.0	50- 60	401.3	1965	78.8,78.8
70	234.8	235.0	232.5	239.1	240.5	236.0	237.2	235.4	60- 70	305.3	2271	91,91
80	98.27	95.71	91.94	99.34	102.3	99.03	96.78	98.14	70- 80	175.5	2446	98.1,98.1
90	1.657	1.722	1.633	1.651	1.921	2.017	1.916	2.012	80- 90	48.13	2494	100,100
100									90-100			
110									100-110			
120									110-120			
130									120-130			
140									130-140			
150									140-150			
160									150-160			
170									160-170			
180									170-180			
DEG	LUMINOUS INTENSITY:cd									UNIT:lm		

Conical surface Flux(90deg): 1342.9 lm

%lum = 53.8%

%lamp = 53.8%

Conical surface Flux(130deg): 2132.6 lm

%lum = 85.5%

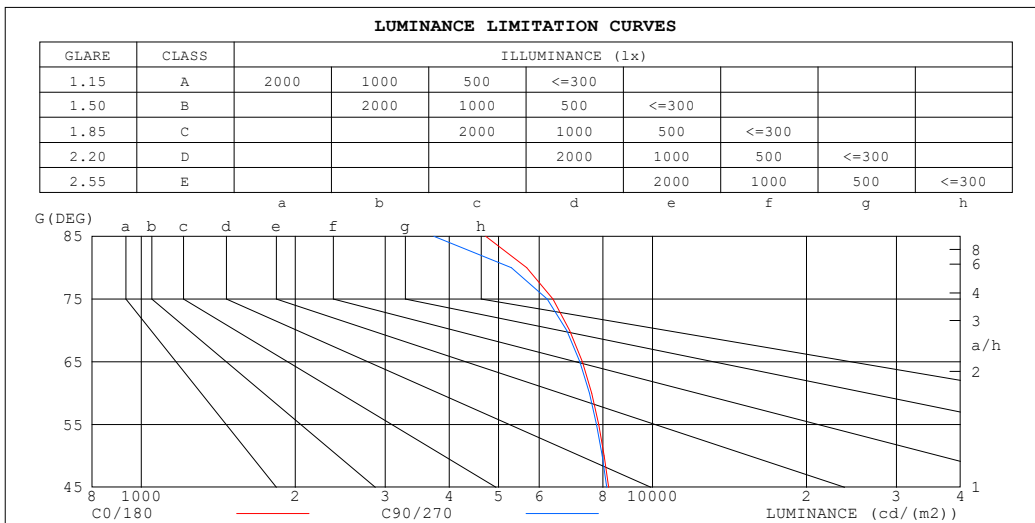
%lamp = 85.5%

C Range: 0 - 360DEG  
 C Interval: 15.0DEG  
 Test Speed: HIGH  
 Temperature:25.3°C  
 Operators:DAMIN  
 Test Date:2024-01-25

$\gamma$  Range: 0 - 90DEG  
 $\gamma$  Interval: 5.0DEG  
 Test System:EVERFINE GO-2000B\_V1 SYSTEM V2.00.473  
 Humidity:65.0%  
 Test Distance:9.401m [K=1.0000]  
 Remarks:

**LUMINANCE LIMITATION CURVES**

Test:U:220.44V I:0.1146A P:23.484W PF:0.9298 Freq:50.00Hz Lamp Flux:2494.15x1 lm		
NAME:	TYPE:	WEIGHT:
SPEC.:	DIM.:	SERIAL No.:
MFR.: EVERFINE	SUR.:	Shielding Angle:



LUMINANCE cd/(m2)		
G (DEG)	C0/180	C90/270
85	4716	3734
80	5675	5291
75	6383	6223
70	6885	6793
65	7290	7205
60	7602	7521
55	7845	7769
50	8042	7969
45	8209	8139

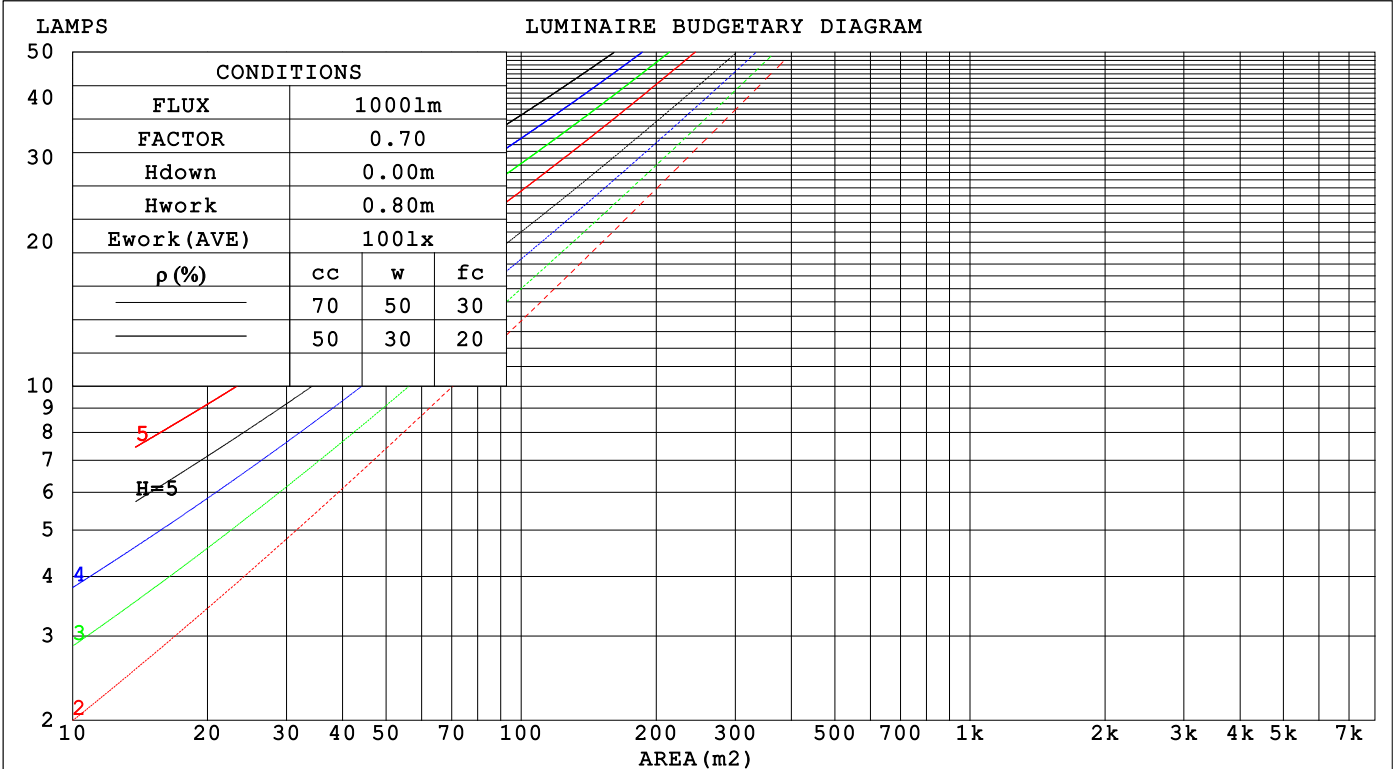
C Range: 0 - 360DEG  
 C Interval: 15.0DEG  
 Test Speed: HIGH  
 Temperature:25.3°C  
 Operators:DAMIN  
 Test Date:2024-01-25

γ Range: 0 - 90DEG  
 γ Interval: 5.0DEG  
 Test System:EVERFINE GO-2000B\_V1 SYSTEM V2.00.473  
 Humidity:65.0%  
 Test Distance:9.401m [K=1.0000]  
 Remarks:

**CU AND LUMINAIRE BUDGETARY ESTIMATE DIAGRAM**

Test:U:220.44V I:0.1146A P:23.484W PF:0.9298 Freq:50.00Hz Lamp Flux:2494.15x1 lm		
NAME:	TYPE:	WEIGHT:
SPEC.:	DIM.:	SERIAL No.:
MFR.: EVERFINE	SUR.:	Shielding Angle:

pcc	80%			70%			50%			30%			10%			0
	50%	30%	10%	50%	30%	10%	50%	30%	10%	50%	30%	10%	50%	30%	10%	0
pw	50%	30%	10%	50%	30%	10%	50%	30%	10%	50%	30%	10%	50%	30%	10%	0
pfc	20%			20%			20%			20%			20%			0
RCR	RCR:Room Cavity Ratio      Coefficients of Utilization(CU)															
0.0	1.19	1.19	1.19	1.16	1.16	1.16	1.11	1.11	1.11	1.06	1.06	1.06	1.02	1.02	1.02	1.00
1.0	1.04	.00	.96	1.02	.98	.94	.97	.94	.91	.93	.91	.88	.90	.88	.86	.84
2.0	.90	.84	.78	.89	.82	.77	.85	.80	.75	.82	.77	.73	.79	.75	.72	.70
3.0	.79	.71	.65	.78	.70	.64	.75	.68	.63	.72	.66	.62	.69	.65	.61	.59
4.0	.70	.61	.55	.69	.61	.54	.66	.59	.54	.64	.58	.53	.62	.57	.52	.50
5.0	.63	.54	.47	.62	.53	.47	.60	.52	.46	.58	.51	.46	.56	.50	.45	.43
6.0	.57	.48	.41	.56	.47	.41	.54	.46	.41	.52	.45	.40	.50	.44	.40	.38
7.0	.51	.42	.36	.50	.42	.36	.49	.41	.36	.47	.41	.36	.46	.40	.35	.33
8.0	.47	.38	.32	.46	.38	.32	.45	.37	.32	.43	.37	.32	.42	.36	.32	.30
9.0	.43	.35	.29	.42	.34	.29	.41	.34	.29	.40	.33	.29	.39	.33	.29	.27
10.0	.40	.32	.26	.39	.31	.26	.38	.31	.26	.37	.31	.26	.36	.30	.26	.24



C Range: 0 - 360DEG  
 C Interval: 15.0DEG  
 Test Speed: HIGH  
 Temperature:25.3°C  
 Operators:DAMIN  
 Test Date:2024-01-25

γ Range: 0 - 90DEG  
 γ Interval: 5.0DEG  
 Test System:EVERFINE GO-2000B\_V1 SYSTEM V2.00.473  
 Humidity:65.0%  
 Test Distance:9.401m [K=1.0000]  
 Remarks:

WEC AND CCEC

Test:U:220.44V I:0.1146A P:23.484W PF:0.9298 Freq:50.00Hz								
Lamp Flux:2494.15x1 lm								
NAME:			TYPE:			WEIGHT:		
SPEC.:			DIM.:			SERIAL No.:		
MFR.: EVERFINE			SUR.:			Shielding Angle:		

$\rho_{CC}$	80%			70%			50%			30%			10%			0
$\rho_w$	50%	30%	10%	50%	30%	10%	50%	30%	10%	50%	30%	10%	50%	30%	10%	0
$\rho_{fc}$	20%			20%			20%			20%			20%			0
RCR	RCR:Room Cavity Ratio						Wall Exitance Coefficients(WEC)									
0.0																
1.0	.310	.176	.056	.303	.173	.055	.290	.166	.053	.277	.160	.051	.266	.154	.050	
2.0	.292	.160	.049	.285	.157	.048	.274	.152	.047	.263	.147	.046	.253	.143	.045	
3.0	.270	.144	.043	.264	.142	.043	.254	.138	.042	.244	.134	.041	.235	.130	.040	
4.0	.249	.129	.038	.244	.128	.038	.235	.125	.037	.226	.122	.037	.218	.119	.036	
5.0	.230	.117	.034	.226	.116	.034	.218	.113	.033	.210	.111	.033	.203	.108	.033	
6.0	.213	.107	.031	.210	.106	.030	.202	.104	.030	.196	.102	.030	.189	.100	.030	
7.0	.199	.098	.028	.195	.097	.028	.189	.095	.027	.183	.094	.027	.177	.092	.027	
8.0	.186	.091	.025	.182	.090	.025	.177	.088	.025	.171	.087	.025	.166	.085	.025	
9.0	.174	.084	.023	.171	.083	.023	.166	.082	.023	.161	.081	.023	.156	.079	.023	
10.0	.163	.078	.022	.161	.078	.022	.156	.077	.022	.152	.075	.021	.148	.074	.021	

$\rho_{CC}$	80%			70%			50%			30%			10%			0
$\rho_w$	50%	30%	10%	50%	30%	10%	50%	30%	10%	50%	30%	10%	50%	30%	10%	0
$\rho_{fc}$	20%			20%			20%			20%			20%			0
RCR	RCR:Room Cavity Ratio						Ceiling Cavity Exitance Coefficients(CCEC)									
0.0	.190	.190	.190	.163	.163	.163	.111	.111	.111	.064	.064	.064	.020	.020	.020	
1.0	.180	.156	.134	.154	.134	.116	.106	.092	.080	.061	.053	.047	.019	.017	.015	
2.0	.172	.132	.098	.148	.114	.085	.101	.079	.059	.058	.046	.035	.019	.015	.011	
3.0	.164	.114	.074	.141	.099	.064	.097	.068	.045	.056	.040	.027	.018	.013	.009	
4.0	.157	.101	.058	.135	.087	.051	.093	.061	.036	.054	.036	.021	.017	.012	.007	
5.0	.149	.091	.047	.128	.078	.041	.088	.055	.029	.051	.032	.017	.016	.010	.006	
6.0	.142	.082	.039	.122	.071	.034	.084	.050	.024	.049	.029	.014	.016	.010	.005	
7.0	.135	.075	.033	.116	.065	.029	.080	.046	.021	.047	.027	.012	.015	.009	.004	
8.0	.129	.070	.029	.111	.060	.025	.077	.042	.018	.045	.025	.011	.014	.008	.004	
9.0	.123	.065	.025	.106	.056	.022	.073	.039	.016	.043	.023	.009	.014	.008	.003	
10.0	.117	.060	.022	.101	.052	.020	.070	.037	.014	.041	.022	.008	.013	.007	.003	

C Range: 0 - 360DEG  
 C Interval: 15.0DEG  
 Test Speed: HIGH  
 Temperature:25.3°C  
 Operators:DAMIN  
 Test Date:2024-01-25

$\gamma$  Range: 0 - 90DEG  
 $\gamma$  Interval: 5.0DEG  
 Test System:EVERFINE GO-2000B\_V1 SYSTEM V2.00.473  
 Humidity:65.0%  
 Test Distance:9.401m [K=1.0000]  
 Remarks:

**UGR(Unified Glare Rating) Table**

Test:U:220.44V I:0.1146A P:23.484W PF:0.9298 Freq:50.00Hz										
Lamp Flux:2494.15x1 lm										
NAME:			TYPE:			WEIGHT:				
SPEC.:			DIM.:			SERIAL No.:				
MFR.: EVERFINE			SUR.:			Shielding Angle:				
ceiling/cavity	0.7	0.7	0.5	0.5	0.3	0.7	0.7	0.5	0.5	0.3
walls	0.5	0.3	0.5	0.3	0.3	0.5	0.3	0.5	0.3	0.3
working plane	0.2	0.2	0.2	0.2	0.2	0.2	0.2	0.2	0.2	0.2
Room dimensions	Viewed crosswise					Viewed endwise				
x = 2H y = 2H	16.8	18.4	17.1	18.6	18.8	16.8	18.3	17.1	18.5	18.7
3H	18.3	19.7	18.6	20.0	20.2	18.3	19.7	18.6	19.9	20.2
4H	18.9	20.3	19.2	20.5	20.8	18.8	20.2	19.2	20.4	20.7
6H	19.3	20.6	19.6	20.8	21.1	19.2	20.5	19.5	20.7	21.0
8H	19.4	20.6	19.7	20.9	21.2	19.2	20.5	19.6	20.7	21.0
12H	19.4	20.6	19.8	20.9	21.2	19.3	20.4	19.6	20.7	21.0
4H 2H	17.4	18.8	17.7	19.0	19.3	17.4	18.7	17.7	19.0	19.2
3H	19.1	20.3	19.5	20.6	20.9	19.1	20.2	19.4	20.5	20.8
4H	19.8	20.9	20.2	21.2	21.5	19.7	20.8	20.1	21.1	21.5
6H	20.3	21.3	20.7	21.6	22.0	20.2	21.1	20.6	21.5	21.9
8H	20.4	21.3	20.9	21.7	22.1	20.3	21.2	20.7	21.5	21.9
12H	20.5	21.3	21.0	21.7	22.1	20.3	21.1	20.7	21.5	21.9
8H 4H	20.0	20.9	20.5	21.3	21.7	20.0	20.9	20.4	21.2	21.6
6H	20.7	21.4	21.1	21.8	22.2	20.5	21.3	21.0	21.7	22.1
8H	20.9	21.5	21.3	21.9	22.4	20.7	21.3	21.1	21.8	22.2
12H	21.0	21.6	21.5	22.0	22.5	20.8	21.3	21.2	21.8	22.3
12H 4H	20.0	20.9	20.5	21.2	21.6	20.0	20.8	20.4	21.2	21.6
6H	20.7	21.3	21.1	21.8	22.2	20.6	21.2	21.0	21.7	22.1
8H	20.9	21.5	21.4	21.9	22.4	20.7	21.3	21.2	21.7	22.2
Variations with the observer position at spacings(CIE Pub.117):										
S = 1.0H	+ 0.1 / - 0.2					+ 0.1 / - 0.2				
1.5H	+ 0.2 / - 0.3					+ 0.2 / - 0.3				
2.0H	+ 0.2 / - 0.3					+ 0.2 / - 0.4				

CIE Pub.117, 2494 lm Total Lamp Luminous Flux Correct (8log(F/F0) = 3.2)  
 Area: 0.1 m2

C Range: 0 - 360DEG  
 C Interval: 15.0DEG  
 Test Speed: HIGH  
 Temperature:25.3°C  
 Operators:DAMIN  
 Test Date:2024-01-25

γ Range: 0 - 90DEG  
 γ Interval: 5.0DEG  
 Test System:EVERFINE GO-2000B\_V1 SYSTEM V2.00.473  
 Humidity:65.0%  
 Test Distance:9.401m [K=1.0000]  
 Remarks:

**UTILIZATION FACTORS TABLE**

Test:U:220.44V I:0.1146A P:23.484W PF:0.9298 Freq:50.00Hz Lamp Flux:2494.15x1 lm		
NAME:	TYPE:	WEIGHT:
SPEC.:	DIM.:	SERIAL No.:
MFR.: EVERFINE	SUR.:	Shielding Angle:

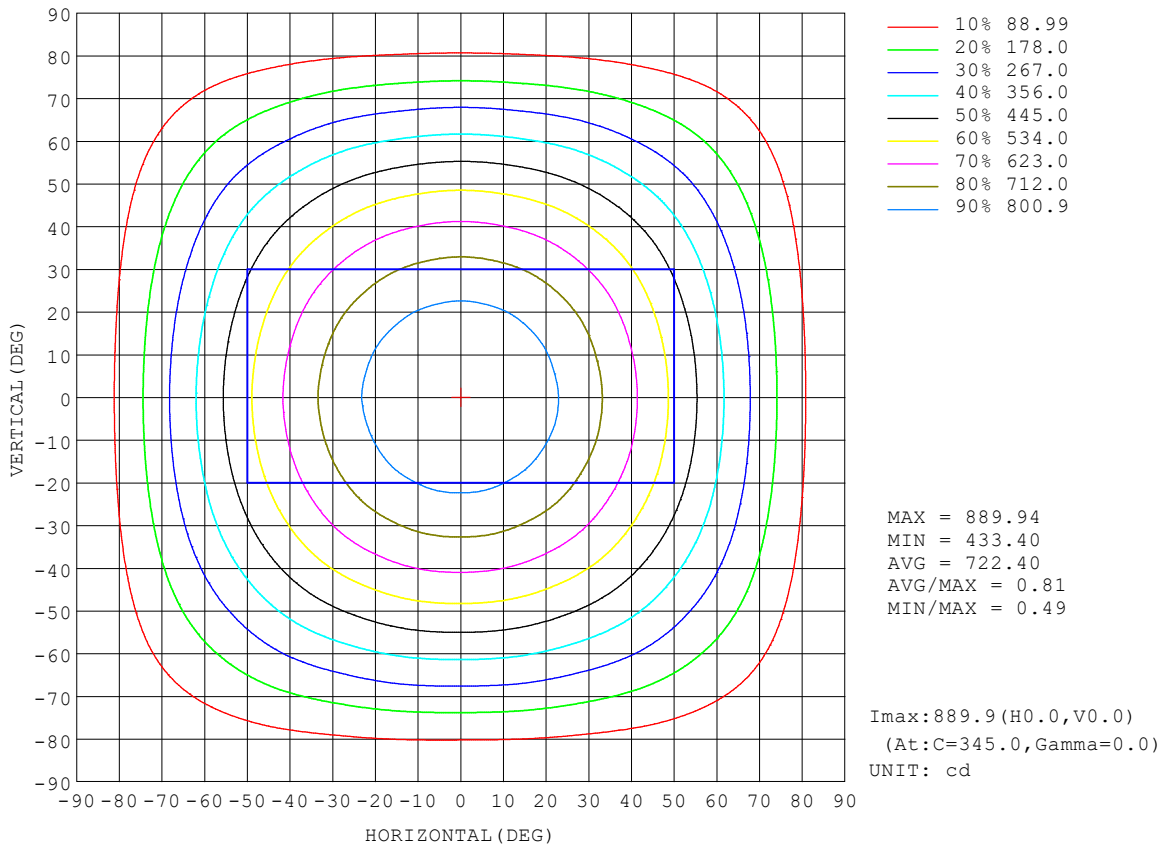
REFLECTANCE										
Ceiling	0.8	0.8	0.8	0.7	0.7	0.7	0.5	0.5	0.5	0
Walls	0.7	0.5	0.3	0.7	0.5	0.3	0.7	0.5	0.3	0
Working plane	0.2	0.2	0.2	0.2	0.2	0.2	0.2	0.2	0.2	0
ROOM INDEX	UTILIZATION FACTORS (PERCENT) $k(RI) \times RCR = 5$									
k = 0.60	58	46	39	57	46	39	56	45	39	32
0.80	68	56	49	67	56	49	65	55	48	41
1.00	76	65	58	75	64	57	73	66	57	50
1.25	83	73	66	82	72	65	79	70	64	57
1.50	88	78	71	86	77	71	83	76	70	62
2.00	95	86	80	93	85	79	90	83	78	70
2.50	99	91	85	97	90	84	93	87	82	74
3.00	102	95	90	100	94	89	96	91	87	78
4.00	106	101	96	104	99	94	100	95	92	83
5.00	109	104	100	106	102	98	102	98	95	86
ROOM INDEX	UF(total)									Direct
According to DIN EN 13032-2 2004			Suspended				SHRNOM = 1.25			

C Range: 0 - 360DEG  
 C Interval: 15.0DEG  
 Test Speed: HIGH  
 Temperature:25.3°C  
 Operators:DAMIN  
 Test Date:2024-01-25

$\gamma$  Range: 0 - 90DEG  
 $\gamma$  Interval: 5.0DEG  
 Test System:EVERFINE GO-2000B\_V1 SYSTEM V2.00.473  
 Humidity:65.0%  
 Test Distance:9.401m [K=1.0000]  
 Remarks:

**ISOCANDELA DIAGRAM**

Test:U:220.44V I:0.1146A P:23.484W PF:0.9298 Freq:50.00Hz Lamp Flux:2494.15x1 lm		
NAME:	TYPE:	WEIGHT:
SPEC.:	DIM.:	SERIAL No.:
MFR.: EVERFINE	SUR.:	Shielding Angle:



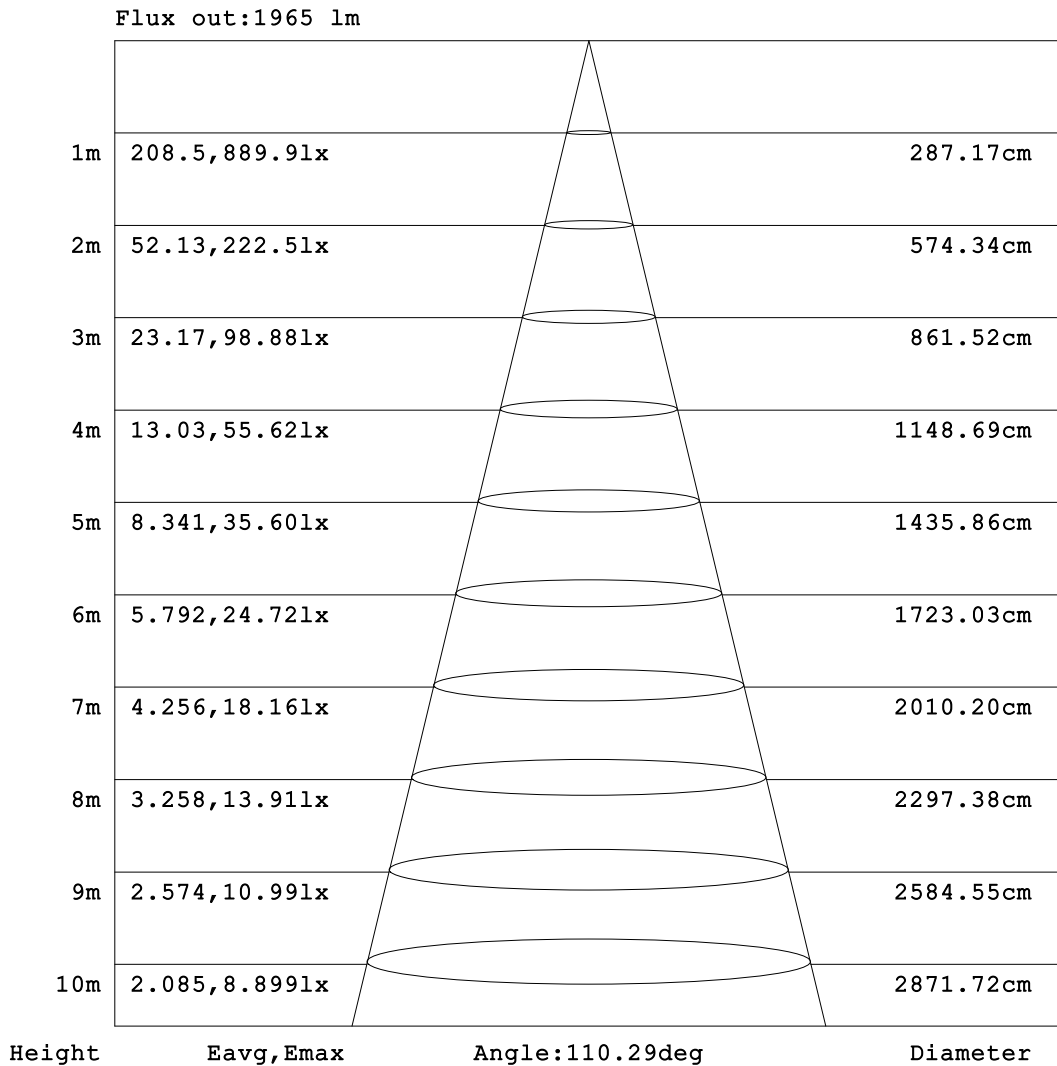
C Range: 0 - 360DEG  
 C Interval: 15.0DEG  
 Test Speed: HIGH  
 Temperature:25.3°C  
 Operators:DAMIN  
 Test Date:2024-01-25

γ Range: 0 - 90DEG  
 γ Interval: 5.0DEG  
 Test System:EVERFINE GO-2000B\_V1 SYSTEM V2.00.473  
 Humidity:65.0%  
 Test Distance:9.401m [K=1.0000]  
 Remarks:



**AAI Figure**

Test:U:220.44V I:0.1146A P:23.484W PF:0.9298 Freq:50.00Hz Lamp Flux:2494.15x1 lm		
NAME:	TYPE:	WEIGHT:
SPEC.:	DIM.:	SERIAL No.:
MFR.: EVERFINE	SUR.:	Shielding Angle:



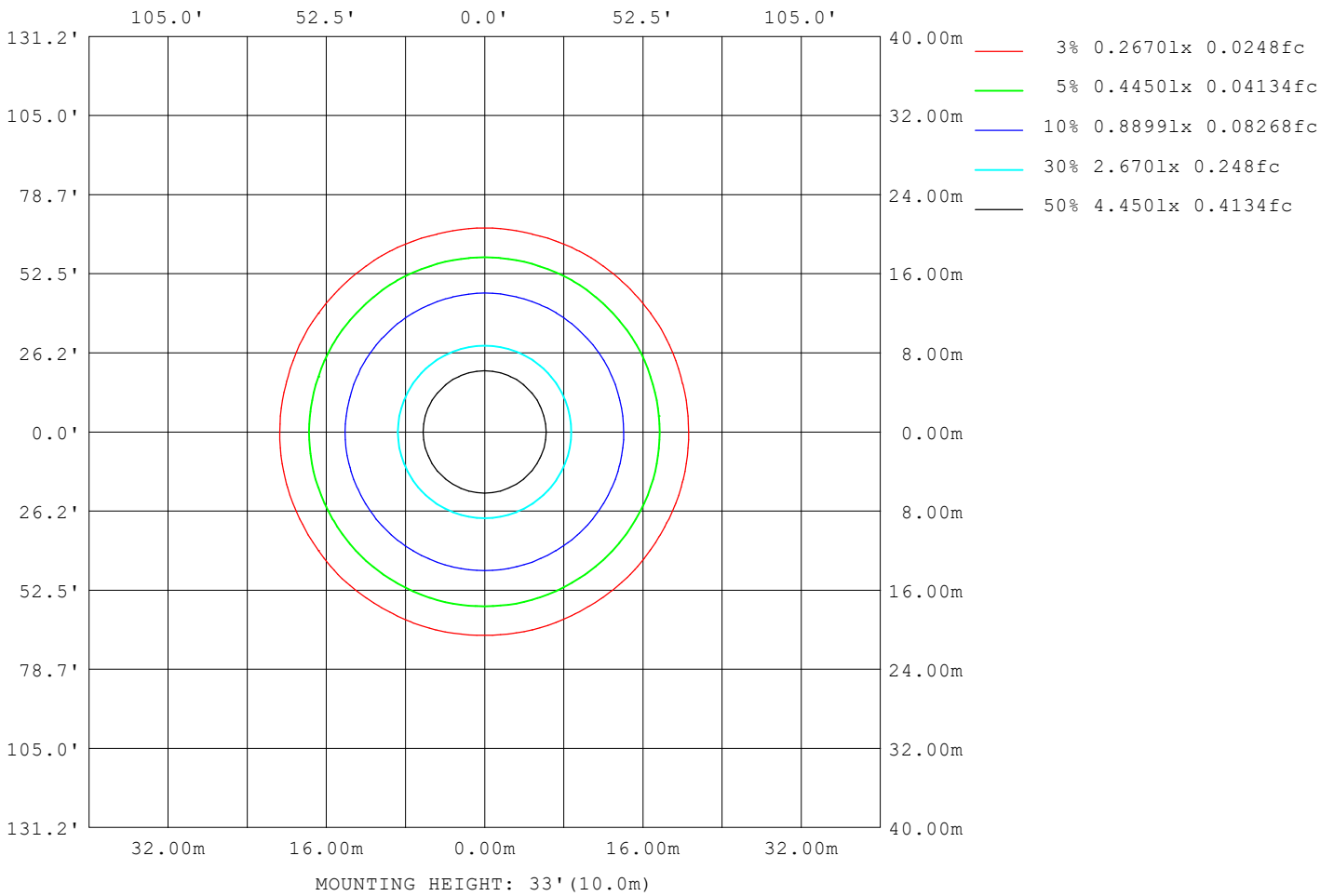
Note: The Curves indicate the illuminated area and the average illumination when the luminaire is at different distance.

C Range: 0 - 360DEG  
 C Interval: 15.0DEG  
 Test Speed: HIGH  
 Temperature: 25.3°C  
 Operators: DAMIN  
 Test Date: 2024-01-25

γ Range: 0 - 90DEG  
 γ Interval: 5.0DEG  
 Test System: EVERFINE GO-2000B\_V1 SYSTEM V2.00.473  
 Humidity: 65.0%  
 Test Distance: 9.401m [K=1.0000]  
 Remarks:

**ISOLUX DIAGRAM**

Test:U:220.44V I:0.1146A P:23.484W PF:0.9298 Freq:50.00Hz Lamp Flux:2494.15x1 lm		
NAME:	TYPE:	WEIGHT:
SPEC.:	DIM.:	SERIAL No.:
MFR.: EVERFINE	SUR.:	Shielding Angle:



C Range: 0 - 360DEG  
 C Interval: 15.0DEG  
 Test Speed: HIGH  
 Temperature:25.3°C  
 Operators:DAMIN  
 Test Date:2024-01-25

γ Range: 0 - 90DEG  
 γ Interval: 5.0DEG  
 Test System:EVERFINE GO-2000B\_V1 SYSTEM V2.00.473  
 Humidity:65.0%  
 Test Distance:9.401m [K=1.0000]  
 Remarks:

**LED Avg.L Report**

Test:U:220.44V I:0.1146A P:23.484W PF:0.9298 Freq:50.00Hz Lamp Flux:2494.15x1 lm		
NAME:	TYPE:	WEIGHT:
SPEC.:	DIM.:	SERIAL No.:
MFR.: EVERFINE	SUR.:	Shielding Angle:

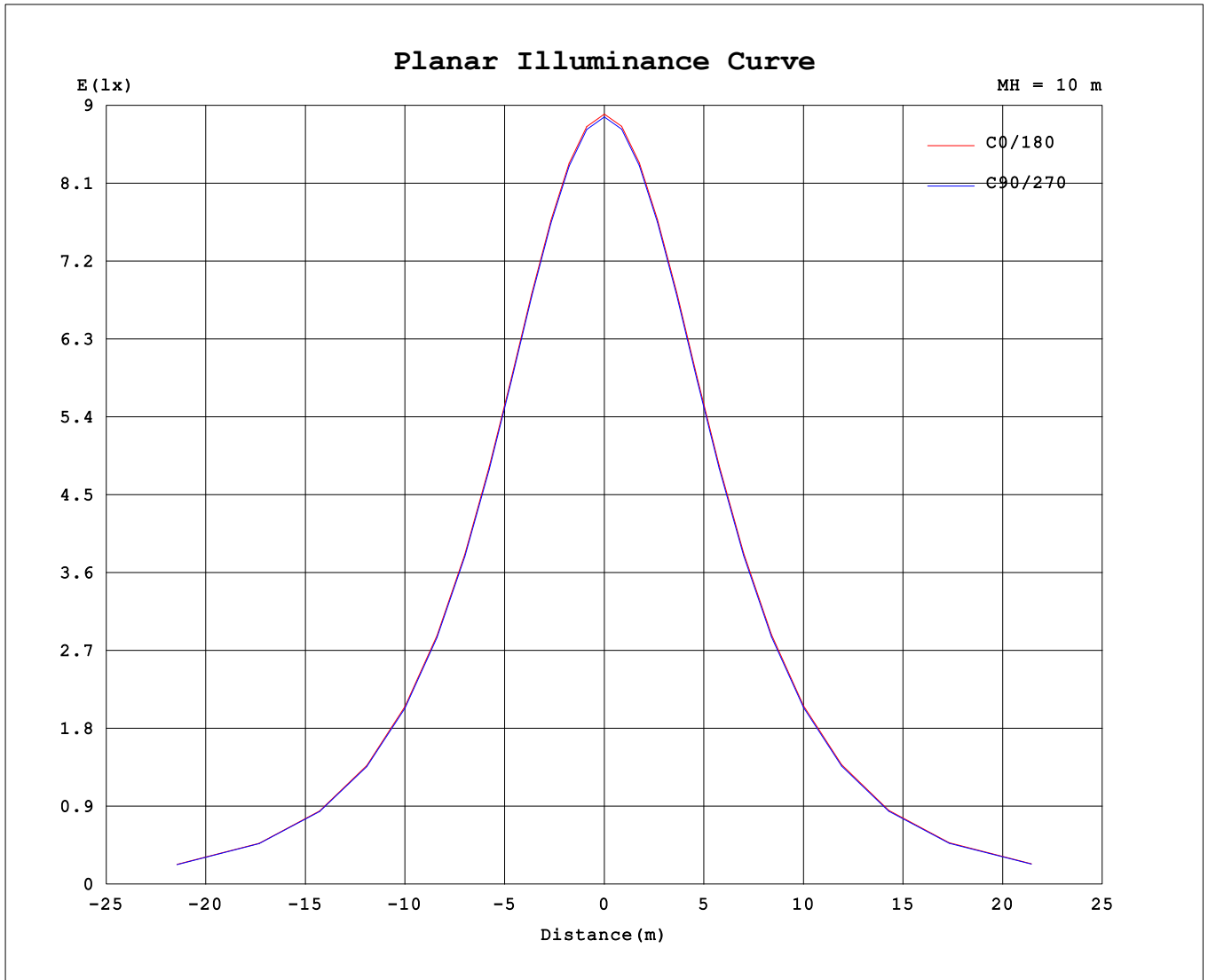
AvgL	cd/m2
L_0~180 (65) av	7336
L_0~180 (75) av	6451
L_0~180 (85) av	4903
L_90~270 (65) av	7264
L_90~270 (75) av	6314
L_90~270 (85) av	4013
L_45 (65) av	7303
L_45 (75) av	6405
L_45 (85) av	4410

Standard: GB/T 29293-2012

C Range: 0 - 360DEG  
 C Interval: 15.0DEG  
 Test Speed: HIGH  
 Temperature:25.3°C  
 Operators:DAMIN  
 Test Date:2024-01-25

γ Range: 0 - 90DEG  
 γ Interval: 5.0DEG  
 Test System:EVERFINE GO-2000B\_V1 SYSTEM V2.00.473  
 Humidity:65.0%  
 Test Distance:9.401m [K=1.0000]  
 Remarks:

**Planar Illuminance Curve**



C Range: 0 - 360DEG  
 C Interval: 15.0DEG  
 Test Speed: HIGH  
 Temperature: 25.3°C  
 Operators: DAMIN  
 Test Date: 2024-01-25

γ Range: 0 - 90DEG  
 γ Interval: 5.0DEG  
 Test System: EVERFINE GO-2000B\_V1 SYSTEM V2.00.473  
 Humidity: 65.0%  
 Test Distance: 9.401m [K=1.0000]  
 Remarks:

LUMINOUS DISTRIBUTION INTENSITY DATA

Test:U:220.44V I:0.1146A P:23.484W PF:0.9298 Freq:50.00Hz Lamp Flux:2494.15x1 lm		
NAME:	TYPE:	WEIGHT:
SPEC.:	DIM.:	SERIAL No.:
MFR.: EVERFINE	SUR.:	Shielding Angle:

Table--1

UNIT: cd

C (DEG) \ γ (DEG)	0	15	30	45	60	75	90	105	120	135	150	165	180	195	210	225	240	255	270
0	887	887	887	887	887	887	887	887	887	887	887	887	887	887	887	887	887	887	887
5	883	883	883	883	883	883	883	883	883	883	883	883	883	883	883	883	883	883	883
10	870	870	870	870	870	870	870	870	870	870	870	871	871	870	871	870	870	870	870
15	849	849	848	849	848	849	848	849	849	849	849	850	850	849	850	849	849	849	849
20	820	820	819	820	819	819	819	820	820	821	821	822	822	821	821	820	821	820	820
25	784	784	783	783	782	783	782	784	783	785	785	786	786	785	785	784	784	783	784
30	741	742	740	740	739	740	739	741	740	742	742	744	743	742	742	741	741	740	741
35	692	693	691	691	689	691	690	692	691	694	693	695	695	693	694	692	692	691	692
40	638	638	636	636	635	636	635	637	637	639	639	641	641	639	639	637	638	636	637
45	579	579	577	577	576	577	576	578	578	581	580	582	582	580	581	578	579	577	578
50	515	516	514	514	512	514	513	515	515	518	517	519	519	517	518	515	516	514	515
55	449	449	447	447	446	447	446	448	448	451	451	453	453	451	451	449	449	447	449
60	379	380	377	378	376	378	376	379	379	382	381	384	383	381	382	379	380	378	379
65	307	309	305	308	304	307	305	309	307	312	310	313	313	309	312	308	310	307	309
70	235	237	233	235	232	235	233	236	235	239	237	241	241	237	239	236	238	235	237
75	165	165	163	164	161	163	161	164	164	168	167	170	169	168	168	166	167	165	166
80	98.3	98.6	96.3	95.7	92.8	93.0	91.9	94.4	95.4	99.3	100	103	102	101	101	99.0	98.5	96.3	96.8
85	41.0	40.5	37.5	36.0	33.4	33.4	32.6	34.4	35.4	39.0	40.8	43.9	44.5	43.2	42.2	39.8	38.8	37.2	37.4
90	1.66	1.66	1.72	1.72	1.68	1.64	1.63	1.63	1.65	1.65	1.72	1.69	1.92	1.99	1.99	2.02	1.93	1.92	1.92

C Range: 0 - 360DEG      γ Range: 0 - 90DEG  
 C Interval: 15.0DEG      γ Interval: 5.0DEG  
 Test Speed: HIGH      Test System:EVERFINE GO-2000B\_V1 SYSTEM V2.00.473  
 Temperature:25.3°C      Humidity:65.0%  
 Operators:DAMIN      Test Distance:9.401m [K=1.0000]  
 Test Date:2024-01-25      Remarks:

LUMINOUS DISTRIBUTION INTENSITY DATA

Test:U:220.44V I:0.1146A P:23.484W PF:0.9298 Freq:50.00Hz Lamp Flux:2494.15x1 lm		
NAME:	TYPE:	WEIGHT:
SPEC.:	DIM.:	SERIAL No.:
MFR.: EVERFINE	SUR.:	Shielding Angle:

Table--2

UNIT: cd

C (DEG) \ γ (DEG)	285	300	315	330	345												
0	887	887	887	887	887												
5	883	883	883	883	883												
10	870	870	870	870	870												
15	849	849	849	849	849												
20	820	820	820	821	820												
25	783	784	784	785	784												
30	740	741	741	742	741												
35	691	693	692	694	693												
40	637	638	638	639	638												
45	577	579	579	580	579												
50	514	516	516	517	516												
55	448	450	449	451	449												
60	378	380	379	381	379												
65	307	310	308	311	308												
70	235	238	235	238	236												
75	165	166	165	167	165												
80	96.1	98.0	98.1	99.7	98.9												
85	37.0	38.4	39.0	40.9	41.1												
90	1.93	1.92	2.01	2.01	1.98												

C Range: 0 - 360DEG      γ Range: 0 - 90DEG  
C Interval: 15.0DEG      γ Interval: 5.0DEG  
Test Speed: HIGH      Test System:EVERFINE GO-2000B\_V1 SYSTEM V2.00.473  
Temperature:25.3°C      Humidity:65.0%  
Operators:DAMIN      Test Distance:9.401m [K=1.0000]  
Test Date:2024-01-25      Remarks: